

# Series 69000

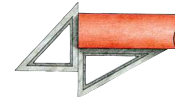


## Assembling

To ensure the best function of our fittings, please follow the under mentioned instructions, in order to avoid waste of time and bad applications of the product.

### 1.

Cut the tube at 90° and remove internal and external burrs.



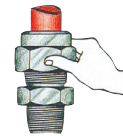
### 2.

Lightly oil the tube nut, olive and fitting thread. Slide the nut and olive onto the tube ensuring that the sharp side of the olive is facing the fitting.



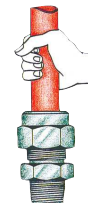
### 3.

Screw the nut onto the fitting by hand until hand-tight.



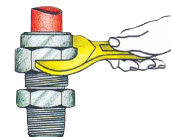
### 4.

Ensure the tube is pushed fully home into the fitting before tightening the nut with the correct spanner.



### 5.

Tighten the nut with the spanner one and a quarter turns, marking reference points, if necessary.



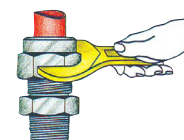
### 6.

To ensure that the olive has gripped the tube correctly. Unscrew the nut and make sure that the groove made by the olive is even.



### 7.

Tighten the nut again with an extra quarter turn. Additional information to ensure correct assembly. Where fitting to curved tubes ensure that the section entering the fitting is straight for a minimum length of twice the nut height.

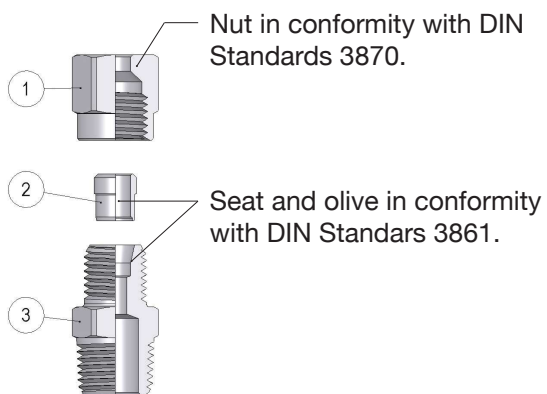
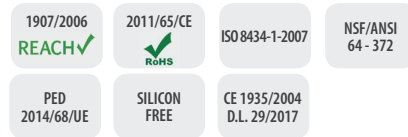


# Series 69000



## Stainless Steel AISI 316L Compression Fittings

Technical Characteristics  
Reference standard



### Component Parts and Materials

1. Stainless Steel AISI 316L (1.4404) Nut
2. Stainless Steel AISI 316L (1.4404) Olive
3. Stainless Steel AISI 316L (1.4404) Body

### Connection Tubes

Tubes made in Stainless Steel, copper, steel, iron, aluminium, brass, PA.

### Threads

Tapered gas in conformity with ISO7.1, BS 21, DIN 2999.  
Parallel gas in conformity with ISO 228 Class A. Metric in conformity with ISO R/262.

# Series 69000



## Pressures and Temperatures

The working pressures and working temperatures depend on which type of tube is used, for this reason, the values must be determined in accordance with the tube's features.

Hereunder, we specify the values of the maximum pressure advised for the fittings at a temperature of 20° C connected with copper tube, which has a thickness of 1 mm.

The values of working pressures advised, specified in table have been obtained from the test values using a Safety Factor 4.

It is available the test report made by the external laboratory test.



## Temperature

-60°C to +300°C

## Pressures

-0.99 bar (-0.099 MPa)

Ø 4/6/8: 100 bar (10 MPa)

Ø 10/12: 250 bar (25 MPa)

## Fluids

Water / Oils / Compressed air

Fluids in general for the hydraulic, pneumatic and oildynamic plants etc.

Torque specifications			
Torque Force on Olive Nut			
Ø mm	N° Key turns	Force Nm	Force kgf
4	1 1/4 + 1/4	15	1.55
6	1 1/4 + 1/4	18	1.85
8	1 1/4 + 1/4	22	2.25
10	1 1/4 + 1/4	40	4
12	1 1/4 + 1/4	50	5
14	1 1/4 + 1/4	70	7.1
15	1 + 1/4	900	9.1
16	1 + 1/4	90	9.1
18	1 + 1/4	130	13.25
22	1 + 1/4	130	13.25

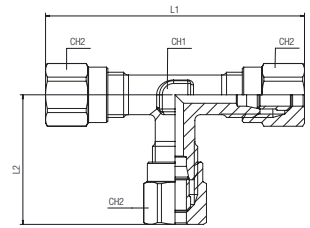
Torque force, minimum recommended, and useful turn, to ensure a correct installation.

# Series 69000



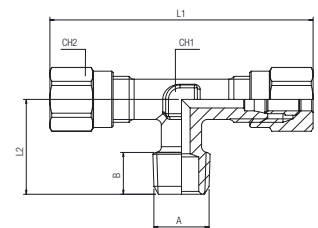
## 69200 Tee Connector

Code	Tube	L1	L2	CH	Pack
69200-4	4	46	21	8	10
69200-6	6	48	22,5	9	10
69200-8	8	53	25	12	10
69200-10	10	65	31,5	13	10
69200-12	12	68	33	14	10



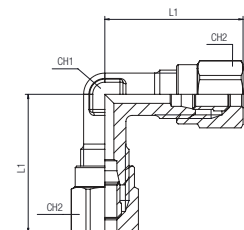
## 69220 Tee Male Adaptor - Centre Leg

Code	Tube	A	B	L1	L2	CH	Pack.
69220-4-1/8	4	1/8	7,5	45	15	8	10
69220-6-1/8	6	1/8	7,5	45	16,5	9	10
69220-6-1/4	6	1/4	11	45	20,5	9	10
69220-8-1/8	8	1/8	7,5	52	17	12	10
69220-8-1/4	8	1/4	11	52	20,5	12	10
69220-8-3/8	8	3/8	11,5	50	24	13	10
69220-10-1/4	10	1/4	11	64	23,5	13	10
69220-10-3/8	10	3/8	11,5	64	24	13	10
69220-12-3/8	12	3/8	11,5	68	25	14	10
69220-12-1/2	12	1/2	14	68	26,5	14	10



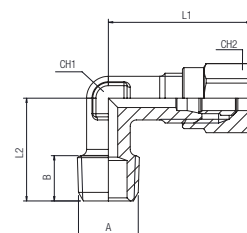
## 69260 Elbow Connector

Code	Tube	L	CH	Pack
69260-4	4	21	8	10
69260-6	6	22,5	9	10
69260-8	8	26,5	12	10
69260-10	10	31,5	13	10
69260-12	12	34,5	14	10



## 69280 Elbow Male Adaptor

Code	Tube	A	B	L1	L2	CH	Pack.
69280-4-1/8	4	1/8	7,5	22	15	8	10
69280-6-1/8	6	1/8	7,5	23,5	17	9	10
69280-6-1/4	6	1/4	11	24	19,5	9	10
69280-8-1/8	8	1/8	7,5	26,5	18	12	10
69280-8-1/4	8	1/4	11	26,5	21,5	11	10
69280-8-3/8	8	3/8	11,5	29,5	24,5	13	10
69280-10-1/4	10	1/4	11	33	23,5	13	10
69280-10-3/8	10	3/8	11,5	33	24,5	13	10
69280-12-3/8	12	3/8	11,5	34,5	25	14	10
69280-12-1/2	12	1/2	14	34,5	28	15	10

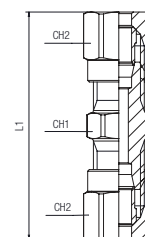


# Series 69000



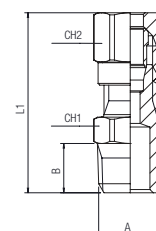
## 69460 Straight Connector

Code	Tube	L	CH	Pack
69460-4	4	36	9	10
69460-6	6	39	12	10
69460-8	8	39	12	10
69460-10	10	48	17	10
69460-12	12	49	19	10



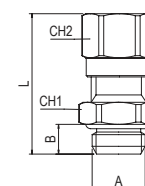
## 69480 Straight Male Adaptor

Code	Tube	A	B	L	CH	Pack.
69480-4-1/8	4	1/8	7,5	27,5	11	10
69480-6-1/8	6	1/8	7,5	28	11	10
69480-6-1/4	6	1/4	11	31,5	14	10
69480-8-1/8	8	1/8	7,5	30	12	10
69480-8-1/4	8	1/4	11	33,5	14	10
69480-8-3/8	8	3/8	11,5	35	17	10
69480-10-1/4	10	1/4	11	38	16	10
69480-10-3/8	10	3/8	11,5	38,5	17	10
69480-12-3/8	12	3/8	11,5	38,5	18	10
69480-12-1/2	12	1/2	14	41,5	21	10



## 69485 Straight Male Adaptor with FKM

Code	Tube	A	B	L	CH	Pack.
69485-4-1/8	4	1/8	7,5	27,5	11	10
69485-6-1/8	6	1/8	7,5	28	11	10
69485-6-1/4	6	1/4	11	31,5	14	10
69485-8-1/8	8	1/8	7,5	30	12	10
69485-8-1/4	8	1/4	11	33,5	14	10
69485-8-3/8	8	3/8	11,5	35	17	10
69485-10-1/4	10	1/4	11	38	16	10
69485-10-3/8	10	3/8	11,5	38,5	17	10
69485-12-3/8	12	3/8	11,5	38,5	18	10
69485-12-1/2	12	1/2	14	41,5	21	10



## 69680 Nut

Code	Tube	L	CH	M	Pack.
69680-4-1/8	4 LL	11	10	M8x1	50
69680-6-1/8	6 LL	11,5	12	M10x1	50
69680-8-1/4	8 LL	12	14	M12x1	50
69680-10-1/8	10 L	15,5	19	M16x1,5	50
69680-12-1/4	12 L	15,5	22	M18x1,5	50

