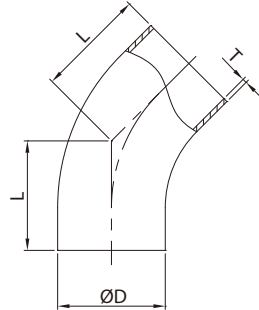
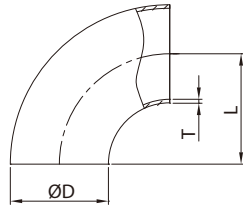


BS Type, 316L Hygienic Pipe Fittings



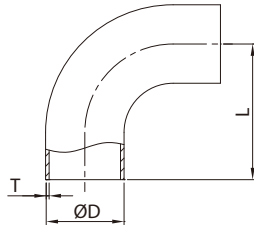
L2KS LONG 45° ELBOW

SIZE	ØD	L	T
1"	25.4	30.2	1.65
1.5"	38.1	41.3	1.65
2"	50.8	58.7	1.65
2.5"	63.5	76.2	1.65
3"	76.2	93.7	1.65
4"	101.6	122.2	2.1



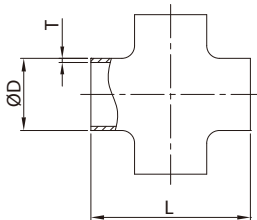
2WCL SHORT WELD 90° ELBOW

SIZE	ØD	L	T
1"	25.4	43.5	1.65
1.5"	38.1	63.5	1.65
2"	50.8	88.5	1.65
2.5"	63.5	113.5	1.65
3"	76.2	133.5	1.65
4"	101.6	173.5	2.1



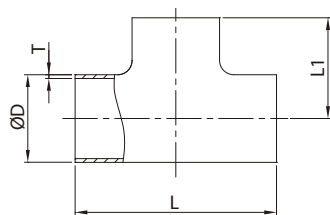
L2S LONG WELD 90° ELBOW

SIZE	ØD	L	T
1/2"	12.7	45	1.65
3/4"	19.05	60	1.65
1"	25.4	65	1.65
1.5"	38.1	85	1.65
2"	50.8	110	1.65
2.5"	63.5	135	1.65
3"	76.2	155	1.65
4"	101.6	195	2.1



9W CROSS

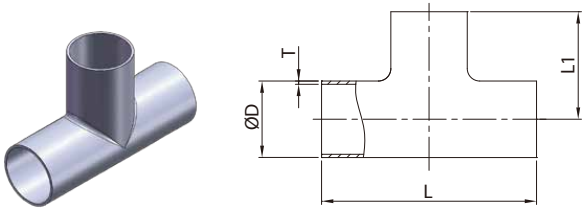
SIZE	ØD	L	T
1"	25.4	130	1.65
1.5"	38.1	170	1.65
2"	50.8	220	1.65
2.5"	63.5	270	1.65
3"	76.2	310	1.65
4"	101.6	390	2.1



7WWW SHORT TEE

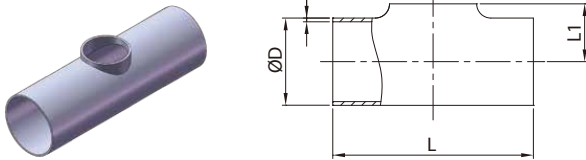
SIZE	ØD	L	L1	T
1"	25.4	87	43.5	1.65
1.5"	38.1	127	63.5	1.65
2"	50.8	177	88.5	1.65
2.5"	63.5	227	113.5	1.65
3"	76.2	267	133.5	1.65
4"	101.6	347	173.5	2.1

BS Type, 316L Hygienic Pipe Fittings



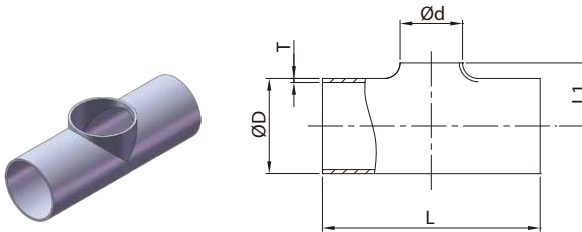
7W LONG TEE

SIZE	ØD	L	L1	T
1"	25.4	130	65	1.65
1.5"	38.1	170	85	1.65
2"	50.8	220	110	1.65
2.5"	63.5	270	135	1.65
3"	76.2	310	155	1.65
4"	101.6	390	195	2.1



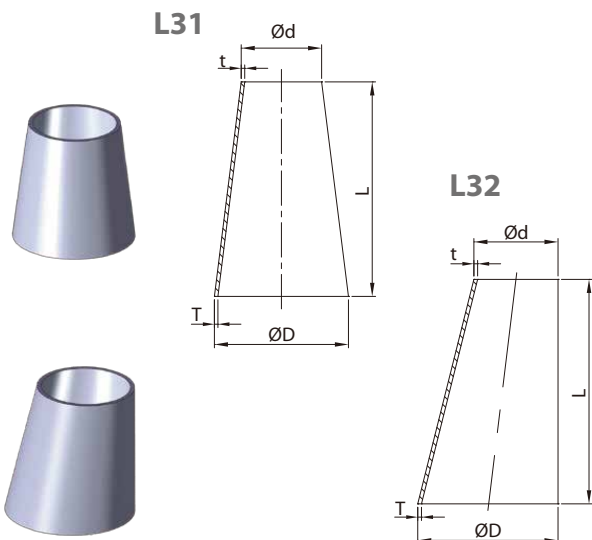
7WO PULL TEE

SIZE	ØD	L	L1	T
1"	25.4	87	13.8	1.65
1.5"	38.1	127	19.9	1.65
2"	50.8	177	27.6	1.65
2.5"	63.5	227	34.9	1.65
3"	76.2	267	40.9	1.65
4"	101.6	347	54.7	2.1



7RWO REDUCING PULL TEE

SIZE	ØD	Ød	L	L1	T
1.5"×1"	38.1	25.4	127	22	1.65
2"×1"	50.8	25.4	177	29	1.65
2"×1.5"	50.8	38.1	177	29	1.65
2.5"×1"	63.5	25.4	227	35	1.65
2.5"×1.5"	63.5	38.1	227	35	1.65
2.5"×2"	63.5	50.8	227	35	1.65
3"×1"	76.2	25.4	267	41	1.65
3"×1.5"	76.2	38.1	267	41	1.65
3"×2"	76.2	50.8	267	41	1.65
3"×2.5"	76.2	63.5	267	41	1.65
4"×2"	101.6	50.8	347	55	2.1
4"×2.5"	101.6	63.5	347	55	2.1
4"×3"	101.6	76.2	347	55	2.1



WELD REDUCERS

SIZE	ØD	Ød	L	L1	T	t
1.5"×1"	38.1	25.4	29	35	1.65	1.65
2"×1"	50.8	25.4	53	54	1.65	1.65
2"×1.5"	50.8	38.1	41	36	1.65	1.65
2.5"×1"	63.5	25.4	82	76	1.65	1.65
2.5"×1.5"	63.5	38.1	64	66	1.65	1.65
2.5"×2"	63.5	50.8	40	35	1.65	1.65
3"×1"	76.2	25.4	110	112	1.65	1.65
3"×1.5"	76.2	38.1	81	78	1.65	1.65
3"×2"	76.2	50.8	55	66	1.65	1.65
3"×2.5"	76.2	63.5	41	44	1.65	1.65
4"×1.5"	101.6	38.1	135	122	2.1	1.65
4"×2"	101.6	50.8	106	97	2.1	1.65
4"×2.5"	101.6	63.5	76	73	2.1	1.65
4"×3"	101.6	76.2	53	77	2.1	1.65