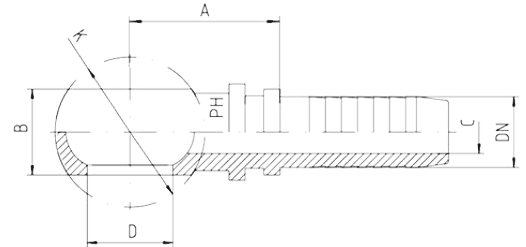
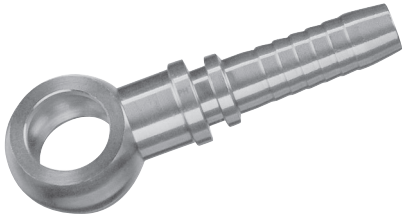


Banjos, Inserts



• Metric + BSP

Hose	Bore	For Bolt	Approx. Dimensions				Order Code
DN			A	B	C	D	
06	1/4"	M10 x 1 + G 1/8"	33.0	10	4.0	10.1	RGN-10-DN06
06	1/4"	M12 x 1.5	36.0	12	4.0	12.1	RGN-12-DN06
06	1/4"	M14 x 1.5	27.5	14	4.0	14.1	RGN-14-DN06
06	1/4"	M16 x 1.5		16			RGN-16-DN06
06	1/4"	G1/4"	27.5	14	4.0	13.3	RGN-1/4"-DN06
08	5/16"	M10 x 1 + G 1/8"	33.0	10	5.5	10.1	RGN-10-DN08
08	5/16"	M12 x 1.5	36.0	12	5.5	12.1	RGN-12-DN08
08	5/16"	M14 x 1.5	27.5	14	5.5	14.1	RGN-14-DN08
08	5/16"	M16 x 1.5 + G 3/8"	35.5	16	5.5	16.6	RGN-16-DN08
10	3/8"	M14 x 1.5	37.5	14	7.0	14.1	RGN-14-DN10
10	3/8"	M16 x 1.5 + G 3/8"	35.5	16	7.0	16.6	RGN-16-DN10
10	3/8"	M18 x 1.5	40.5	20	7.0	18.1	RGN-18-DN10
10	3/8"	G1/2"	45.5	22	7.0	21.2	RGN-1/2"-DN10
12	1/2"	G1/2"	46.5	22	9.5	21.2	RGN-1/2"-DN12
12	1/2"	M16 x 1.5 + G 3/8"	36.0	16	9.5	16.6	RGN-16-DN12
12	1/2"	M18 x 1.5	38.0	20	9.5	18.1	RGN-18-DN12
12	1/2"	M22 x 1.5	47.0	25	9.5	22.1	RGN-22-DN12
19	3/4"	M26 x 1.5 + G 3/4"	53.0	30	14.5	26.3	RGN-26-DN19
16	5/8"	M22 x 1.5	47.5	25	12.5	22.1	RGN-22-DN16