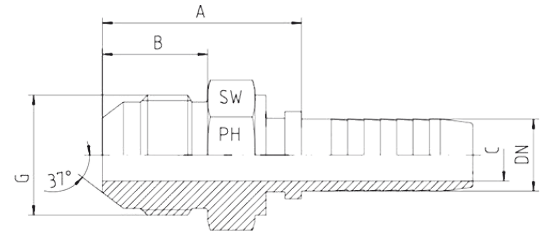
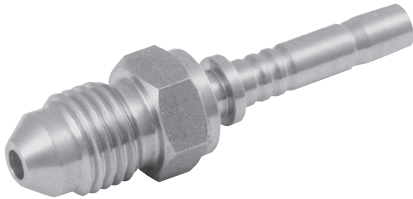


JIC 37° Male Inserts



Hose	Bore	Thread	Approx. Dimensions				Order Code
DN		G	A	B	C	SW	
05	3/16"	7/16"-20	21.0	14.0	3.0	12	AGJ-7/16-DN05
06	1/4"	7/16"-20	27.5	14.0	4.0	14	AGJ-7/16-DN06
05	3/16"	1/2"-20	21.0	14.0	3.0	14	AGJ-1/2-DN05
06	1/4"	1/2"-20	27.5	14.0	4.0	17	AGJ-1/2-DN06
08	5/16"	1/2"-20	27.5	14.0	5.5	17	AGJ-1/2-DN08
05	3/16"	9/16"-18	22.0	14.1	3.0	17	AGJ-9/16-DN05
06	1/4"	9/16"-18	29.5	14.1	4.0	17	AGJ-9/16-DN06
08	5/16"	9/16"-18	29.5	14.1	5.5	17	AGJ-9/16-DN08
10	3/8"	9/16"-18	29.5	14.1	7.0	17	AGJ-9/16-DN10
10	3/8"	3/4"-16	33.0	16.7	7.0	22	AGJ-3/4-DN10
12	1/2"	3/4"-16	31.0	16.7	9.5	22	AGJ-3/4-DN12
10	3/8"	7/8"-14	36.0	19.3	7.0	24	AGJ-7/8-DN10
12	1/2"	7/8"-14	36.5	19.3	9.5	24	AGJ-7/8-DN12
16	5/8"	7/8"-14	37.0	19.3	12.5	24	AGJ-7/8-DN16
12	1/2"	1.1/16"-12	38.5	22.0	9.5	27	AGJ-11/16-DN12
16	5/8"	1.1/16"-12	40.0	22.0	12.5	27	AGJ-11/16-DN16
19	3/4"	1.1/16"-12	43.0	22.0	14.5	27	AGJ-11/16-DN19
19	3/4"	1.5/16"-12	44.0	23.1	14.5	36	AGJ-15/16-DN19
25	1"	1.5/16"-12	44.0	23.1	20.0	36	AGJ-15/16-DN25
25	1"	1.5/8"-12	50.0	24.4	20.0	46	AGJ-15/8-DN25
31	1.1/4"	1.5/8"-12	48.0	24.4	25.5	46	AGJ-15/8-DN31
31	1.1/4"	1.7/8"-12	51.0	27.5	25.5	50	AGJ-17/8-DN31
38	1.1/2"	1.7/8"-12	53.5	27.5	31.5	50	AGJ-17/8-DN38
38	1.1/2"	2.1/2"-12		33.9	31.5	65	AGJ-21/2-DN38
51	2"	2.1/2"-12	63.0	33.9	43.0	65	AGJ-21/2-DN51