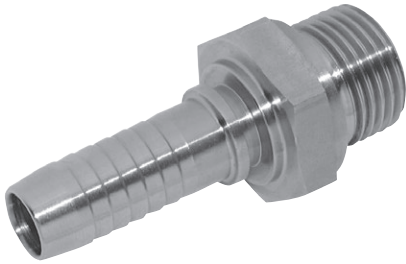
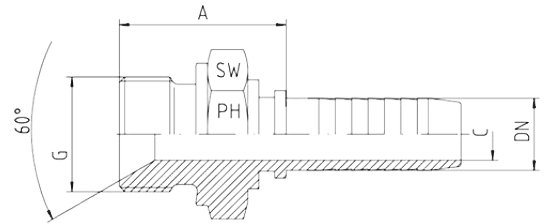


# Male Inserts, BSPP



- With 60° cone and sealing shoulder form B
- Thread: BSP parallel



Hose	Bore	Thread	Approx. Dimensions			Order Code
DN		G	A	C	SW	
05	3/16"	1/4"-19	25.0	3.0	19	SMI05-14
06	1/4"	1/8"-28	23.5	4.0	14	SMI06-18
06	1/4"	1/4"-19	25.5	4.0	19	SMI06-14
06	1/4"	3/8"-19	30.5	4.0	19	SMI06-38
06	1/4"	1/2"-14	34.5	4.0	27	SMI06-12
08	5/16"	1/4"-19	28.0	5.5	19	SMI08-14
08	5/16"	3/8"-19	26.5	5.5	22	SMI08-38
08	5/16"	1/2"-14	31.5	5.5	27	SMI08-12
10	3/8"	1/4"-19	28.0	6.0	19	SMI10-14
10	3/8"	3/8"-19	30.0	7.0	22	SMI10-38
10	3/8"	1/2"-14	32.0	7.0	27	SMI10-12
12	1/2"	3/8"-19	30.5	7.0	22	SMI12-38
12	1/2"	1/2"-14	31.0	9.5	27	SMI12-12
12	1/2"	1/4"-19	27.0	7.0	19	SMI12-34
16	5/8"	1/2"-14	32.0	12.5	27	SMI16-12
16	5/8"	5/8"-14	32.5	12.5	30	SMI16-58
16	5/8"	3/4"-14	35.0	12.5	32	SMI16-34
19	3/4"	3/4"-14	38.0	14.5	32	SMI20-34
19	3/4"	1"-11	41.5	14.5	41	SMI20-1
25	1"	1"-11	42.0	20.0	41	SMI25-1
25	1"	3/4"-14	38.0	19.5	36	SMI25-34
25	1"	1.1/4"-11	45.0	20.0	50	SMI25-114
31	1.1/4"	1.1/4"-11	45.0	25.5	50	SMI31-114
31	1.1/4"	1.1/2"-11	45.0	25.5	55	SMI31-112
38	1.1/2"	1.1/2"-11	48.0	31.5	55	SMI38-112
51	2"	2"-11	50.0	41.0	70	SMI51-2