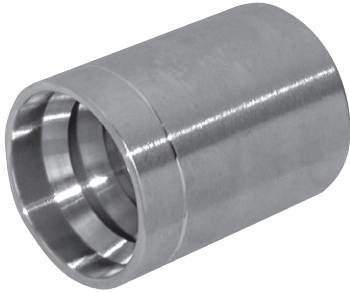
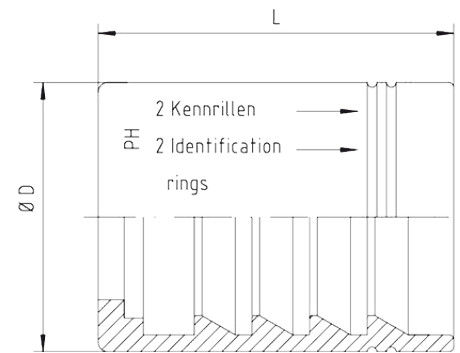


Ferrule, R2AT, Non-skive



- For hose type:
 - 2 SN, DIN, EN 853 + SAE 100 R2AT, DN 06 bis DN 25
 - 3 TE, DIN, EN 854 + 3 TB
- For use with nipples, category 2.17-2.63



Hose	Bore	Approx. Dimensions		Order Code
DN		D	L	
05	3/16"	21	23	SFR2-05
06	1/4"	22	34.5	SFR2-06
08	5/16"	24	34.5	SFR2-08
10	3/8"	26	35	SFR2-10
12	1/2"	30	37	SFR2-12
16	5/8"	33	40	SFR2-16
19	3/4"	38	45	SFR2-20
25	1"	46	50	SFR2-25
31	1.1/4"	55	70	SFR2-31
38	1.1/2"	60	70	SFR2-38
51	2"	76	80	SFR2-51