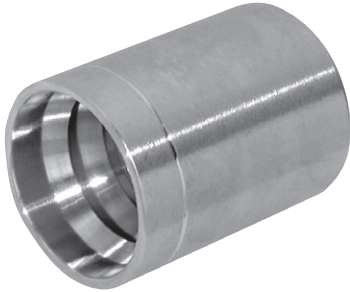
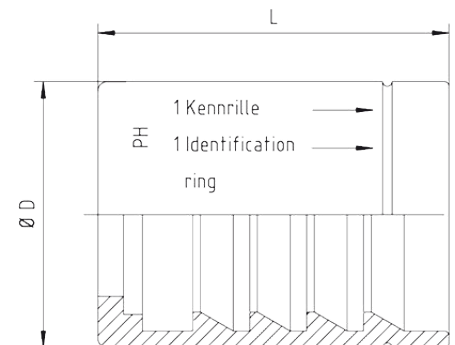


Ferrule, R1AT, Non-skive



- For hose type:
 - 2 TE, DIN, EN 854, DN <25
 - 1 SN, DIN 853 + SAE 100 R1AT / 1 ST, DIN, EN 853 + SAE 100 R 1 A
 - 1 SC, DIN, EN 857, DN 16, 19, 25 / 2 SC, Compact, DIN, EN 857
- For use with nipples, category 2.17-2.63



Hose	Bore	Approx. Dimensions		Order Code
DN		D	L	
05	3/16"	21	23	SFR1-05
06	1/4"	20	34.5	SFR1-06
08	5/16"	22	34.5	SFR1-08
10	3/8"	25	35	SFR1-10
12	1/2"	28	37	SFR1-12
16	5/8"	32	40	SFR1-16
19	3/4"	36	45	SFR1-20
25	1"	45	50	SFR1-25
31	1.1/4"	55	70	SFR1-31
38	1.1/2"	60	70	SFR1-38
51	2"	76	80	SFR1-51