

# SAE 100R2AT, EN853, DIN20022

## 2 Wire Hydraulic Hose

### Application:

- Medium pressure hydraulic applications

### Specification:

- DIN 20022, EN853-2, exceeds SAE100 R2AT

### Construction:

- Inner tube: oil resistant synthetic rubber (NBR)
- Reinforcement: 2 single steel wire braids
- Outer cover: oil and weather resistant synthetic rubber

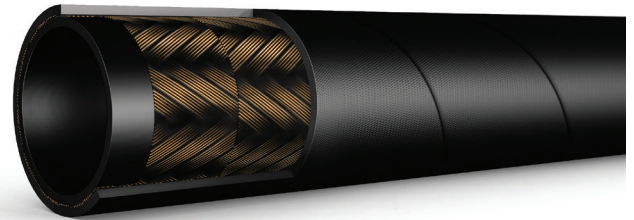
### Recommended Fluids:

- Hose suitable for petroleum based hydraulic oil and water-glycol based

**NB:** For air above 17 bar, the hose cover must be pin-pricked

Available per 1 metre

Smooth cover available on request



**Working Temperature:**  
-40°C to +100°C

EN853 - 2 - DIN20022 - 51mm - SAE 100R2AT - 2" - 51MM - W.P. 80 BAR (B09)

(Colour coding has now been phased in)

Part Code	Size			I.D.		Wire Dimension		OD 1SN	Working Pressure		Pulse Pressure		Burst Pressure		Bend Radius		Weight
	mm	inch	SAE	min	max	min	max	max	Mpa	psi	Mpa	psi	Mpa	psi	Inch	mm	Kg/mtr
100R2AT-04	6.3	1/4	-4	6.2	7.0	12.1	13.3	15.7	40	5800	80	11600	160	23200	3.94	100	0.36
100R2AT-05	8	5/16	-5	7.7	8.5	13.7	14.9	17.3	35	5075	70	10150	140	20300	4.53	115	0.45
100R2AT-06	10	3/8	-6	9.3	10.1	16.7	17.3	19.7	33	4785	66	9570	132	19140	5.12	130	0.54
100R2AT-08	12.5	1/2	-8	12.3	13.5	19.0	20.6	23.0	27.5	3990	55	7975	110	15950	7.09	180	0.68
100R2AT-10	16	5/8	-10	15.5	16.7	22.2	23.8	26.2	25	3625	50	7250	100	14500	7.87	200	0.80
100R2AT-12	19	3/4	-12	18.6	19.8	26.2	27.8	30.1	21.5	3120	43	6235	85	12325	9.45	240	0.94
100R2AT-16	25	1	-16	25.0	26.4	34.1	35.7	38.9	16.5	2390	32.5	4710	65	9425	11.81	300	1.35
100R2AT-20	31.5	1.1/4	-20	31.4	33.0	43.3	45.7	49.5	12.5	1810	25	3625	50	7250	16.54	420	2.15
100R2AT-24	38	1.1/2	-24	37.7	39.3	49.6	52.0	55.9	9	1305	18	2310	36	5220	19.69	500	2.65
100R2AT-32	51	2	-32	50.4	52.0	62.3	64.7	68.6	8	1160	16	2320	32	4640	24.80	630	3.42