

PILOT, LOGIC & SPECIALIST VALVES

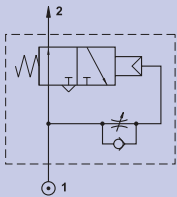
SPECIALIST VALVES



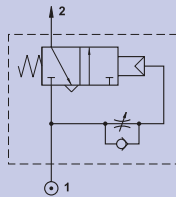
Specification

Model	KP100014	KP100094	KP010444	KP010464	KP100354	KP000744	KP2005
Fluid	Air (to be filtered by 50µm filter element)						
Port	G1/8"		G1/4"			G1/8"	M5
Working Pressure	0.2 - 1MPa (30 - 145psi)				0.3 - 1MPa (45 - 145psi)	0.2 - 1MPa (30 - 145psi)	0.3 - 0.8MPa (45 - 116psi)
Actuating Pressure	-	-	0.3 - 1MPa (45 - 145psi)	0.2 - 1MPa (30 - 145psi)	0.3 - 1MPa (45 - 145psi)	-	-
Temperature	0°C to +60°C						
Material of Body	Aluminium						
Material of Spring	Stainless Steel						
Material of Seals	NBR						
Material of Internal Components	Brass						
Material of Spool	-	-	Nickel Plated Aluminium				-
Time Regulating range	0 - 15 sec				-	0 to 15 sec	-

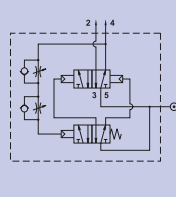
Symbols



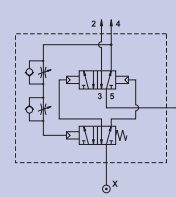
Impulse Valve, NO



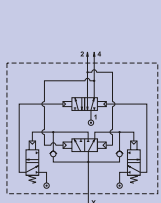
Impulse Valve, NC



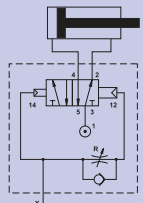
Oscillating Valve,
Continuing Cycle



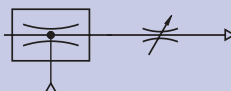
Oscillating Valve,
Pneumatically Piloted



Flip Flop Valve,
Pneumatically Piloted



High Flow Pneumatic Timer
for Automatic Return



Vacuum Driven
Liquid Sprayer

PILOT, LOGIC & SPECIALIST VALVES

SPECIALIST VALVES

Dimensions

Vacuum Driven Liquid Sprayer

Model:

- **KP2005**

Valve Operation

This Valve works on the venturi principle and is primarily used for air driven liquid spraying applications such as conveyor lubrication and sawing machines.

- Liquid Viscosity: 3°E to 5°E

