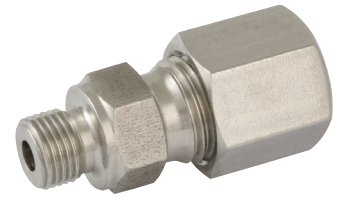
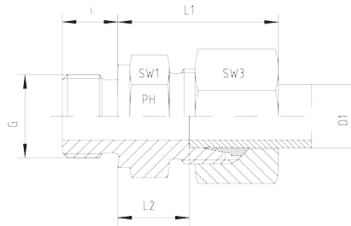


316 Stainless Steel DIN 2353 Tube Fittings



Male Stud Couplings

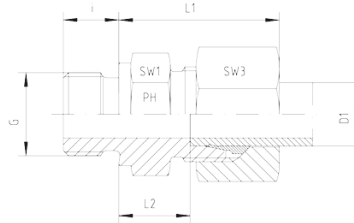
Thread: BSP - Parallel
Sealing by Sealing Shoulder Form B



Pressure	Tube O.D.	Thread	Approx. Dimensions					Order-Code	
			PN	D1	G	L1	L2		i
Series L									
315	6	G 1/8"		23,0	8,5	8	14	14	GE-LR-06-G 1/8"
315	6	G 1/4"		27,0	9,0	12	19	14	GE-LR-06-G 1/4"
315	6	G 3/8"		27,0	11,5	12	22	14	GE-LR-06-G 3/8"
315	6	G 1/2"		29,0	12,0	14	27	14	GE-LR-06-G 1/2"
315	8	G 1/8"		26,0	9,5	8	14	17	GE-LR-08-G 1/8"
315	8	G 1/4"		25,0	10,0	12	19	17	GE-LR-08-G 1/4"
315	8	G 3/8"		28,5	11,5	12	22	17	GE-LR-08-G 3/8"
315	8	G 1/2"		28,5	13,0	14	27	17	GE-LR-08-G 1/2"
315	10	G 1/8"		27,5	11,0	8	17	19	GE-LR-10-G 1/8"
315	10	G 1/4"		26,0	11,0	12	19	19	GE-LR-10-G 1/4"
315	10	G 3/8"		30,5	12,5	12	22	19	GE-LR-10-G 3/8"
315	10	G 1/2"		32,5	13,0	14	27	19	GE-LR-10-G 1/2"
315	10	G 3/4"				16	32	19	GE-LR-10-G 3/4"
315	12	G 1/8"		29,0	11,0	8	19	22	GE-LR-12-G 1/8"
315	12	G 1/4"		30,0	12,0	12	19	22	GE-LR-12-G 1/4"
315	12	G 3/8"		27,0	12,5	12	22	22	GE-LR-12-G 3/8"
315	12	G 1/2"		31,0	13,0	14	27	22	GE-LR-12-G 1/2"
315	12	G 3/4"		31,0	14,0	16	32	22	GE-LR-12-G 3/4"
315	15	G 1/4"		32,0	13,0	12	24	27	GE-LR-15-G 1/4"
315	15	G 3/8"		31,0	13,5	12	24	27	GE-LR-15-G 3/8"
315	15	G 1/2"		29,0	14,0	14	27	27	GE-LR-15-G 1/2"
315	15	G 3/4"		32,5	15,0	16	32	27	GE-LR-15-G 3/4"
315	15	G 1"				18	41	27	GE-LR-15-G 1"
315	18	G 3/8"		31,0	12,5	12	27	32	GE-LR-18-G 3/8"
315	18	G 1/2"		31,0	14,5	14	27	32	GE-LR-18-G 1/2"
315	18	G 3/4"		34,0	14,5	16	32	32	GE-LR-18-G 3/4"
315	18	G 1"			16,5	18	41	32	GE-LR-18-G 1"
160	22	G 3/8"		49,0	16,0	12	32	36	GE-LR-22-G 3/8"
160	22	G 1/2"		37,0	16,5	14	32	36	GE-LR-22-G 1/2"
160	22	G 3/4"		33,0	16,5	16	32	36	GE-LR-22-G 3/4"
160	22	G 1"		38,0	17,5	18	41	36	GE-LR-22-G 1"
160	22	G 1 1/4"				20	50	36	GE-LR-22-G 1 1/4"
160	28	G 1/2"			17,5	14	41	41	GE-LR-28-G 1/2"
160	28	G 3/4"		38,0	17,5	16	41	41	GE-LR-28-G 3/4"
160	28	G 1"		34,0	17,5	18	41	41	GE-LR-28-G 1"
160	28	G 1 1/4"			18,5	20	50	41	GE-LR-28-G 1 1/4"
160	28	G 1 1/2"		43,0	20,5	22	55	41	GE-LR-28-G 1 1/2"
160	35	G 3/4"		42,0	18,5	16	46	50	GE-LR-35-G 3/4"
160	35	G 1"		42,0	17,5	18	46	50	GE-LR-35-G 1"
160	35	G 1 1/4"		39,0	17,5	20	50	50	GE-LR-35-G 1 1/4"
160	35	G 1 1/2"		44,0	19,5	22	55	50	GE-LR-35-G 1 1/2"
160	42	G 1"		47,0	19,0	18	55	60	GE-LR-42-G 1"
160	42	G 1 1/4"		47,0	19,0	20	55	60	GE-LR-42-G 1 1/4"
160	42	G 1 1/2"		47,0	19,0	22	55	60	GE-LR-42-G 1 1/2"
160	42	G 2"					70	60	GE-LR-42-G 2"

316 Stainless Steel DIN 2353 Tube Fittings

Male Stud Couplings



Thread: BSP - Parallel
Sealing by Sealing Shoulder Form B

Pressure	Tube O.D.	Thread	Approx. Dimensions					Order-Code
			PN	D1	G	L1	L2	

Series S

630	6	G 1/8"	28,0	13,0	8	14	17	GE-SR-06-G 1/8"
630	6	G 1/4"	28,0	13,0	12	19	17	GE-SR-06-G 1/4"
630	6	G 3/8"	30,0	15,5	12	22	19	GE-SR-06-G 3/8"
630	6	G 1/2"	34,0	17,0	14	27	19	GE-SR-06-G 1/2"
630	8	G 1/8"		14,0	8	17	19	GE-SR-08-G 1/8"
630	8	G 1/4"	30,0	15,0	12	19	19	GE-SR-08-G 1/4"
630	8	G 3/8"		15,5	12	22	19	GE-SR-08-G 3/8"
630	8	G 1/2"		15,0	14	27	19	GE-SR-08-G 1/2"
630	10	G 1/8"		13,5	8	19	22	GE-SR-10-G 1/8"
630	10	G 1/4"		14,5	12	19	22	GE-SR-10-G 1/4"
630	10	G 3/8"	31,0	15,0	12	22	22	GE-SR-10-G 3/8"
630	10	G 1/2"		13,5	14	27	22	GE-SR-10-G 1/2"
630	10	G 3/4"			16	32	22	GE-SR-10-G 3/4"
630	12	G 1/4"		16,5	12	22	24	GE-SR-12-G 1/4"
630	12	G 3/8"	33,0	17,0	12	22	24	GE-SR-12-G 3/8"
630	12	G 1/2"	34,0	17,5	14	27	24	GE-SR-12-G 1/2"
630	12	G 3/4"	36,0	17,5	16	32	24	GE-SR-12-G 3/4"
630	14	G 1/4"	37,0	17,0	12	24	27	GE-SR-14-G 1/4"
630	14	G 3/8"	37,0	17,0	12	24	27	GE-SR-14-G 3/8"
630	14	G 1/2"	37,0	19,0	14	27	27	GE-SR-14-G 1/2"
400	14	G 3/4"		19,0	16	32	27	GE-SR-14-G 3/4"
400	16	G 1/4"	38,0	17,5	12	27	30	GE-SR-16-G 1/4"
400	16	G 3/8"		18,0	12	27	30	GE-SR-16-G 3/8"
400	16	G 1/2"	37,0	18,5	14	27	30	GE-SR-16-G 1/2"
400	16	G 3/4"	39,0	20,5	16	32	30	GE-SR-16-G 3/4"
400	16	G 1"	43,5	22,5	18	41	30	GE-SR-16-G 1"
400	20	G 3/8"		18,0	12	32	36	GE-SR-20-G 3/8"
400	20	G 1/2"		20,5	14	32	36	GE-SR-20-G 1/2"
400	20	G 3/4"	42,0	20,5	16	32	36	GE-SR-20-G 3/4"
400	20	G 1"		22,5	18	41	36	GE-SR-20-G 1"
400	20	G 1 1/4"		22,5	20	50	36	GE-SR-20-G 1 1/4"
400	25	G 1/2"		23,0	14	41	46	GE-SR-25-G 1/2"
400	25	G 3/4"		23,0	16	41	46	GE-SR-25-G 3/4"
400	25	G 1"	47,0	23,0	18	41	46	GE-SR-25-G 1"
250	25	G 1 1/4"		23,0	20	50	46	GE-SR-25-G 1 1/4"
250	30	G 3/4"		25,5	16	46	50	GE-SR-30-G 3/4"
250	30	G 1"	50,0	23,5	18	46	50	GE-SR-30-G 1"
250	30	G 1 1/4"	50,0	23,5	20	50	50	GE-SR-30-G 1 1/4"
250	30	G 1 1/2"	50,0	23,5	22	55	50	GE-SR-30-G 1 1/2"
250	38	G 1"	42,0	26,0	18	55	50	GE-SR-38-G 1"
250	38	G 1 1/4"		23,0	20	55	60	GE-SR-38-G 1 1/4"
250	38	G 1 1/2"	57,0	26,0	22	55	60	GE-SR-38-G 1 1/2"
250	38	G 2"			70	60	60	GE-SR-38-G 2"