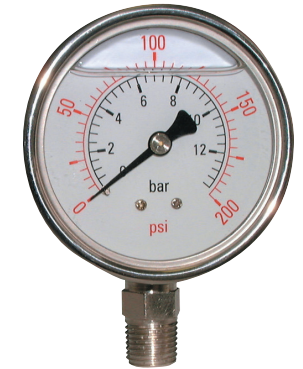


# Glycerine Gauges



## Stainless Steel Case, Bottom Connection



PART NO	TYPE	CASE DIA.	CASE	WINDOW	MOVEMENT	BOURDON TUBE	CONNECTION	ENTRY	RANGE	OPERTATING TEMP.	ACCURACY
PPG63-001BPPG	Gly-filled	63mm	Polished s/s 304	Polycarbonate	Brass	Phosphor Bronze	Brass	Bottom BSPT 1/4"	0-1 bar / psi	Ambient 0-60°C	2.50%
PPG63-002BPPG	Gly-filled	63mm	Polished s/s 304	Polycarbonate	Brass	Phosphor Bronze	Brass	Bottom BSPT 1/4"	0-2 bar / psi	Ambient 0-60°C	2.50%
PPG63-004BPPG	Gly-filled	63mm	Polished s/s 304	Polycarbonate	Brass	Phosphor Bronze	Brass	Bottom BSPT 1/4"	0-4 bar / psi	Ambient 0-60°C	2.50%
PPG63-006BPPG	Gly-filled	63mm	Polished s/s 304	Polycarbonate	Brass	Phosphor Bronze	Brass	Bottom BSPT 1/4"	0-6 bar / psi	Ambient 0-60°C	2.50%
PPG63-012BPPG	Gly-filled	63mm	Polished s/s 304	Polycarbonate	Brass	Phosphor Bronze	Brass	Bottom BSPT 1/4"	0-12 bar / psi	Ambient 0-60°C	2.50%
PPG63-020BPPG	Gly-filled	63mm	Polished s/s 304	Polycarbonate	Brass	Phosphor Bronze	Brass	Bottom BSPT 1/4"	0-20 bar / psi	Ambient 0-60°C	2.50%
PPPG63-025BPPG	Gly-filled	63mm	Polished s/s 305	Polycarbonate	Brass	Phosphor Bronze	Brass	Bottom BSPT 1/4"	0-25 bar / psi	Ambient 0-60°C	2.50%
PPG63-040BPPG	Gly-filled	63mm	Polished s/s 304	Polycarbonate	Brass	Phosphor Bronze	Brass	Bottom BSPT 1/4"	0-40 bar / psi	Ambient 0-60°C	2.50%
PPG63-060BPPG	Gly-filled	63mm	Polished s/s 304	Polycarbonate	Brass	Phosphor Bronze	Brass	Bottom BSPT 1/4"	0-60 bar / psi	Ambient 0-60°C	2.50%
PG63-120BPG	Gly-filled	63mm	Polished s/s 304	Polycarbonate	Brass	Phosphor Bronze	Brass	Bottom BSPT 1/4"	0-120 bar / psi	Ambient 0-60°C	2.50%
PG63-200BPG	Gly-filled	63mm	Polished s/s 304	Polycarbonate	Brass	Phosphor Bronze	Brass	Bottom BSPT 1/4"	0-200 bar / psi	Ambient 0-60°C	2.50%
PG63-400BPG	Gly-filled	63mm	Polished s/s 304	Polycarbonate	Brass	Phosphor Bronze	Brass	Bottom BSPT 1/4"	0-400 bar / psi	Ambient 0-60°C	2.50%
PG63-600BPG	Gly-filled	63mm	Polished s/s 304	Polycarbonate	Brass	Phosphor Bronze	Brass	Bottom BSPT 1/4"	0-600 bar / psi	Ambient 0-60°C	2.50%