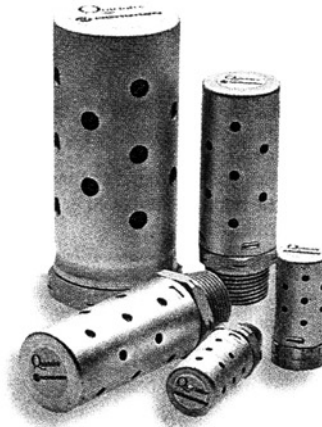


Quietaire heavy duty silencers

MA and MB Series

1/8" to 2" BSPT, BSPP or PTF



Reduce the noise levels of pneumatic equipment.

Prevent open line exhaust dangers.

Corrosion resistant.

High flow capacity with low back pressure.

Brass mesh screen and aluminium construction provide improved flow, longer life and cleanable element.

Prevent metal chips, abrasive grits, dust and other contaminants from entering open exhaust ports.

Technical data

Medium:

Compressed air, filtered, lubricated and non-lubricated, inert gases

Operating pressure:

-1 to 20 bar

Ambient temperature:

-20°C to +80°C

Operation:

Exhaust silencer

Mounting:

Directly in the exhaust port

Materials

Aluminium body and shell, brass mesh element

Alternative models

M/S & C/S range of porous plastic silencers.

T40 series of Quietaire sintered bronze silencers

Male thread

Model	PTF	BSPT	Port size	Flow Factor Cv*/C**	kg
MB001A		MB001B	1/8"	1,3 / 5,3	0,03
MB002A		MB002B	1/4"	2,3 / 9,4	0,03
MBP03A		MBP03B	3/8"	2,9 / 11,8	0,03
MB003A		MB003B	3/8"	4,9 / 20,0	0,10
MB004A		MB004B	1/2"	6,8 / 27,7	0,09
MBP06A		MBP06B	3/4"	7,2 / 29,4	0,09
MB006A		MB006B	3/4"	14,8 / 60,4	0,45
MB008A		MB008B	1"	18,0 / 73,4	0,04
MBP10A		MBP10B	1 1/4"	23,6 / 96,3	0,04

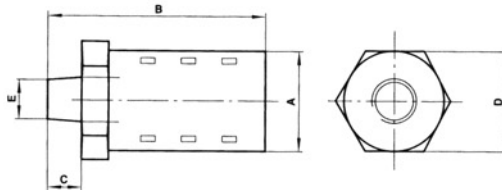
*Cv measured in US/gall/min **C measured in dm³/(s.bar)

Female thread

Model	PTF	BSPT	BSPP	Port size	Flow Factor Cv*/C**	kg
MA001		MA001B		1/8"	0,8 / 3,26	0,03
MA002		MA002B		1/4"	2,4 / 9,79	0,03
MA003		MA003B		3/8"	5,7 / 23,3	0,10
MA004		MA004B		1/2"	6,9 / 28,1	0,09
MA006		MA006B		3/4"	18,0 / 73,4	0,45
MA008		MA008B		1"	20 / 81,6	0,40
MA010			MA010C	1 1/4"	42 / 171,4	0,62
MA012			MA012C	1 1/2"	39 / 159,1	0,60
MA016A			MA016C	2"	59 / 241,0	0,76

*Cv measured in US/gall/min **C measured in dm³/(s.bar)

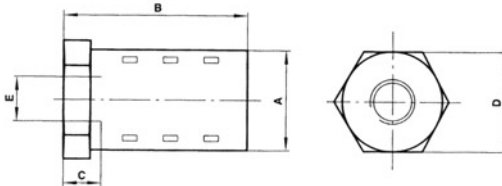
Male thread



A	B	C	D	E	Model
21	51	9	20,6	1/8"	MB001
21	55	13	20,6	1/4"	MB002
21	55	13	20,6	3/8"	MBP03
32	88	13	31,7	3/8"	MB003
32	92	17	31,7	1/2"	MB004
32	92	17	31,7	3/4"	MBP06
51	134	20	50,8	3/4"	MB006
51	138	23	50,8	1"	MB008
51	140	26	50,8	1 1/4"	MBP10

* For MB***B Rc (BSPT) according to BS21 and ISO - 7/1
For MB***A PTF-SAE SHORT according to ANSI-B1.20.1x

Female thread



A	B	C	D	E	Model
21	42	6	20,6	1/8"	MA001
21	45	9	20,6	1/4"	MA002
32	78	9	31,7	3/8"	MA003
32	83	12	31,7	1/2"	MA004
51	118	12	50,8	3/4"	MA006
51	118	15	50,8	1"	MA008
64	144	15	63,5	1 1/4"	MA010
64	144	15	63,5	1 1/2"	MA012
76	168	16	76,2	2"	MA016A

* For MA***B Rc (BSPT) according to BS21 and ISO - 7/1
For MA***A PTF-SAE SHORT according to ANSI-B1.20.1
For MA***C G (BSPP) according to BS2779 and ISO-228/x