

Equal Tees (Metric)



Benefits:

- Leak free O-ring seal
- Safe joint every time
- Low tightening torque and clamping force rises with the internal pressure.
- Low installed cost, no welding (so inert gas purging, NDT and excessive flushing are not required), minimal tube preparation and no special assembly equipment required.
- Demountable and reusable, can be used with most tube materials.

Features:

Body – mild steel, stainless steel or cupro-nickel.
Compatible with most fluids and environments. Locates O-ring and tube.

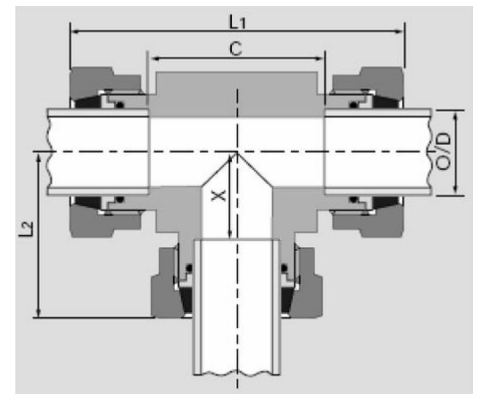
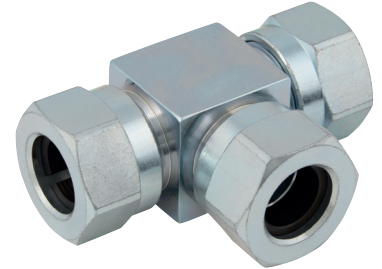
O-ring – nitrile, FPM (Viton), EP or FEP encapsulated FPM. Compatible with most fluids. Highly resistant to leakage even under severe vibration, pressure pulsation and temperature cycling. Provides diametric seal between tube OD and body cavity.

Nut – mild steel, stainless steel or cupro-nickel.
Compatible with most environments. Closes split collet and retains sealing mechanism.


Back-up washer – mild steel, stainless steel, or cupro-nickel. Provides additional support for the tube and locates the O-ring.

Split collet – mild steel, stainless steel or cupro-nickel.
Clamping force rises with pressure. Large clamping area ensures minimal deformation of the tube. Retains tube in position.

- 3:1 safety factor
- Derate by 50% for high pressure gas systems
- Pressure ratings based on the tube OD tolerance to BS3602 and DIN2391C



 **Working Temperature:**
Nitrile: -40°C to +100°C
Viton: -20°C to +150°C

 **Maximum Working Pressure:**
6mm to 22mm: 680 bar
25mm to 50mm: 500 bar

All fittings also available in the following materials upon request:

- Stainless steel
- Cupro-nickel

Seals available on request:

- EP (ethylene propylene)
- FEP encapsulated FPM

All fittings supplied with Nitrile seals as standard.

Primary Item No	O/D	Part No	C mm	L1 mm	L2 mm	X mm	Nut A/F mm	Body A/F mm	*Max WP Bar
5011914	6	KRAM6TR	24	54	27	12	16	16	680
5011968	8	KRAM8TR	27	57	29	14	17	19	680
5011466	10	KRAM10TR	27	71	35	14	27	27	680
5011548	12	KRAM12TR	27	71	35	14	27	27	680
5011619	16	KRAM16TR	33	80	40	17	32	30	680
5011677	20	KRAM20TR	43	103	51	21	41	38	680
5011698	22	KRAM22TR	43	103	51	21	41	38	680
5011742	25	KRAM25TR	44	104	53	22	46	41	500
5011792	30	KRAM30TR	59	126	62	29	50	48	500
5011832	38	KRAM38TR	71	147	74	36	60	54	500
5011864	50	KRAM50TR	98	199	99	49	80	76	500

*Derate maximum working pressure by 50% for high pressure gas systems.