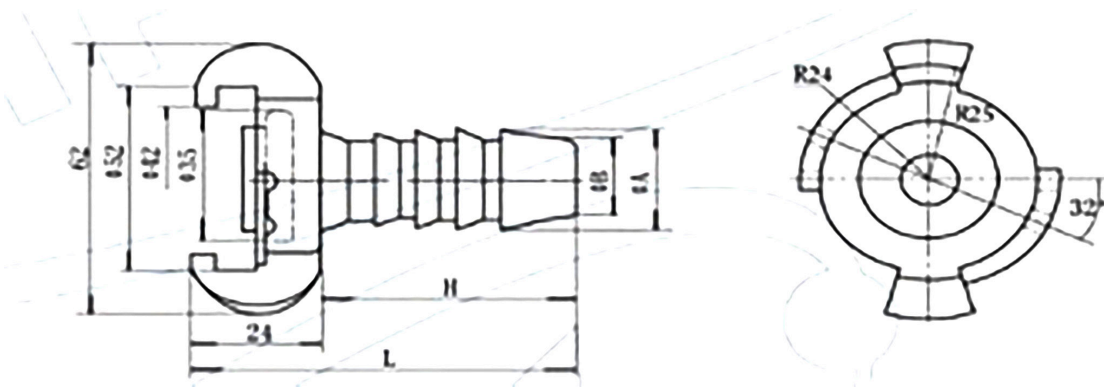


Quick Release Pneumatic Hose Couplings



European Execution Double Lock Claw Couplings

Q1 Hose Tails, Plated



- Robust couplings of malleable iron, zinc plated and yellow passivated (free of chrome VI)
- 100% couple test and sight control
- With oil-resistant rubber ring GOER, on request with steam-resistant rubber ring GDOR (up to 200°C) against charge
- Universal coupling, world-wide used system for compressed air in construction and industry

PART NO	SIZE	A	B	L	H
Q1DLP14	1/4"	8	6.5	60	36
Q1DLP38	3/8"	13	11	70	46
Q1DLP12	1/2"	15	13	70	46
Q1DLP58	5/8"	17.5	15.5	70	46
Q19DLP34	3/4"	21	19	70	46
Q1DLP1	1"	27.5	26	70	46
Q1DLP114	1.1/4"	32	30.5	70	46

PART NO	HOSE I.D	MAX. WORKING PRESSURE	TEMP.	MATERIAL	SEAL	THREADS	MEDIUM	CLAW DISTANCE
Q1DLP14	1/4 = 6MM	PN 10 BAR	-40°C-+95°C	Malleable Iron	NBR	ISO 228	Compressed Air	42mm
Q1DLP38	3/8 = 13MM	PN 10 BAR	-40°C-+95°C	Malleable Iron	NBR	ISO 228	Compressed Air	42mm
Q1DLP12	1/2 = 15MM	PN 10 BAR	-40°C-+95°C	Malleable Iron	NBR	ISO 228	Compressed Air	42mm
Q1DLP58	5/8 = 15MM	PN 10 BAR	-40°C-+95°C	Malleable Iron	NBR	ISO 228	Compressed Air	42mm
Q19DLP34	3/4 = 21MM	PN 10 BAR	-40°C-+95°C	Malleable Iron	NBR	ISO 228	Compressed Air	42mm
Q1DLP1	1 = 27.5MM	PN 10 BAR	-40°C-+95°C	Malleable Iron	NBR	ISO 228	Compressed Air	42mm
Q1DLP114	1.1/4 = 32MM	PN 10 BAR	-40°C-+95°C	Malleable Iron	NBR	ISO 228	Compressed Air	42mm