



**Maximum Temperature:**  
450°C

**Thickness:**  
1.50mm

**Steam:**  
250°C

**Description:**

A superior performance universal material, based on a blend of Aramid/ Inorganic fibres and special additives, with high quality nitrile rubber binder.

**Applications:**

Suitable for many applications including oils, solvents, high pressure steam and gases including oxygen.



**Maximum Pressure:**  
160 bar

**Colour:**  
White

**Approvals & Specification compliance:**

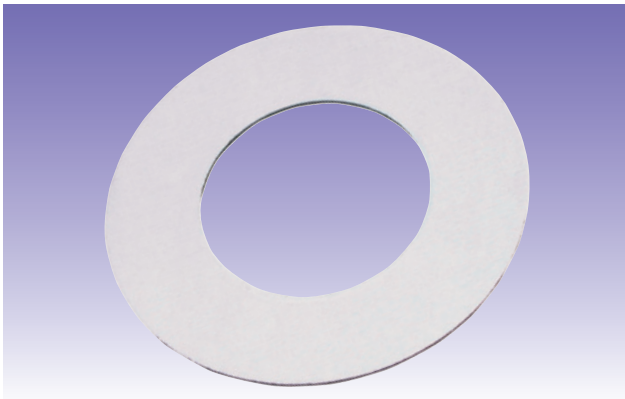
BS Specification 7531 Grade X.  
Din-DVGW 96.01 e-845 (Gas industry).  
BAM (Oxygen Service) up to 90°C and 160 bar.

Independently tested and approved to Shell specification MF94-0960 Appendix 3.

# NONE ASBESTOS FLANGE GASKETS

## IBC Gaskets

Maximum Temperature/Pressure can't be used simultaneously and are dependant on thickness.



N34 150lb, ASME  
B16.5/B16.21



GS12-150	1/2"
GS34-150	3/4"
GS1-150	1"
GS114-150	1.1/4"
GS112-150	1.1/2"
GS2-150	2"
GS212-150	2.1/2"
GS3-150	3"
GS4-150	4"

N34 300lb, ASME  
B16.5/B16.21



GS12-300	1/2"
GS34-300	3/4"
GS1-300	1"
GS114-300	1.1/4"
GS112-300	1.1/2"
GS2-300	2"
GS212-300	2.1/2"
GS3-300	3"
GS4-300	4"

N34 PN16, DIN Standard  
Din-DVGW 96.01 e-845



GSPN16-12	1/2"
GSPN16-34	3/4"
GSPN16-1	1"
GSPN16-114	1.1/4"
GSPN16-112	1.1/2"
GSPN16-2	2"
GSPN16-212	2.1/2"
GSPN16-3	3"
GSPN16-4	4"

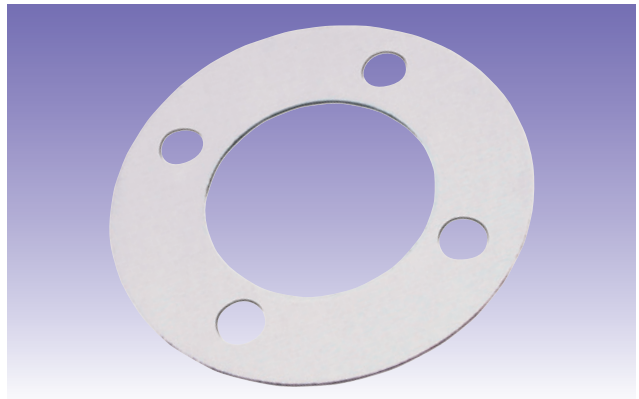
N34 PN40, DIN Standard  
Din-DVGW 96.01 e-845



GSPN40-12	1/2"
GSPN40-34	3/4"
GSPN40-1	1"
GSPN40-114	1.1/4"
GSPN40-112	1.1/2"
GSPN40-2	2"
GSPN40-212	2.1/2"
GSPN40-3	3"
GSPN40-4	4"

## Full Face Gaskets

Maximum Temperature/Pressure can't be used simultaneously and are dependant on thickness.



N34 150lb, ASME  
B16.5/B16.21



GSFF12-150	1/2"
GSFF34-150	3/4"
GSFF1-150	1"
GSFF114-150	1.1/4"
GSFF112-150	1.1/2"
GSFF2-150	2"
GSFF212-150	2.1/2"
GSFF3-150	3"
GSFF4-150	4"

N34 300lb, ASME  
B16.5/B16.21



GSFF12-300	1/2"
GSFF34-300	3/4"
GSFF1-300	1"
GSFF114-300	1.1/4"
GSFF112-300	1.1/2"
GSFF2-300	2"
GSFF212-300	2.1/2"
GSFF3-300	3"
GSFF4-300	4"

N34 PN16, DIN Standard  
Din-DVGW 96.01 e-845



GSFF16-12	1/2"
GSFF16-34	3/4"
GSFF16-1	1"
GSFF16-114	1.1/4"
GSFF16-112	1.1/2"
GSFF16-2	2"
GSFF16-212	2.1/2"
GSFF16-3	3"
GSFF16-4	4"

N34 PN40, DIN Standard  
Din-DVGW 96.01 e-845



GSFF40-12	1/2"
GSFF40-34	3/4"
GSFF40-1	1"
GSFF40-114	1.1/4"
GSFF40-112	1.1/2"
GSFF40-2	2"
GSFF40-212	2.1/2"
GSFF40-3	3"
GSFF40-4	4"