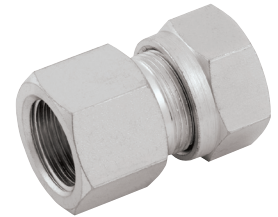
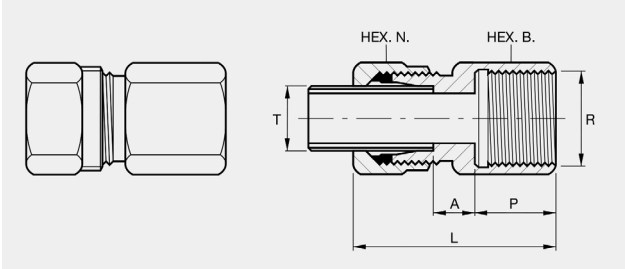


# Hydraulic Imperial Compression Fittings

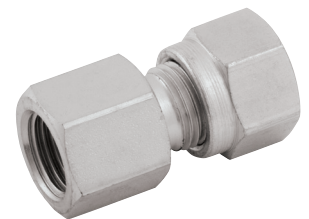


## Steel Fittings for O.D. & N.B.



**BSPP Female Stud Coupling N.D. Tube**

Supplier Part Number	Our Part Number	T	R	N	B	A	P	L
FC4-4	2018-7241	1/4"	1/4"	.710"	.710"	7/32"	7/16"	1.11/32"
FC6-4	2018-7266	3/8"	1/4"	.820"	.710"	1/4"	7/16"	1.13/32"
FC6-6	2018-7274	3/8"	3/8"	.820"	.920"	1/4"	1/2"	1.15/32"
FC6-8	2018-7282	3/8"	3/8"	.820"	1.10"	5/16"	5/8"	1.21/32"
FC8-4	2018-7290	1/2"	1/4"	.920"	.820"	3/16"	7/16"	1.3/8"
FC8-6	2018-7308	1/2"	3/8"	.920"	1.10"	11/32"	3/4"	1.27/32"
FC8-8	2018-7316	1/2"	1/2"	.920"	1.10"	11/32"	5/8"	1.23/32"
FC10-8	2018-7332	5/8"	1/2"	1.10"	1.10"	5/16"	5/8"	1.23/32"
FC12-12	2018-7340	3/4"	3/4"	1.20"	1.30"	5/16"	3/4"	1.7/8"
FC14-12	2018-7357	7/8"	3/4"	1.375"	1.30"	5/16"	3/4"	1.15/16"
FC16-16	2018-7365	1"	1"	1.67"	1.67"	11/32"	7/8"	2.5/32"
FC20-20	2018-7373	1.1/4"	1.1/4"	2.05"	2.05"	1/2"	1"	2.15/32"
FC24-24	2018-7381	1.1/2"	1.1/2"	2.22"	2.22"	1/2"	1"	2.9/16"



**BSPP Female Stud Coupling O.D. Tube**

Supplier Part Number	Our Part Number	T	R	N	B	A	P	L
NFC4-2	2018-7407	1/4"	1/8"	.820"	.710"	7/32"	3/8"	1.11/32"
NFC4-8	2018-7431	1/4"	1/2"	1.10"	1.10"	1/4"	5/8"	1.21/32"
NFC6-8	2018-7480	3/8"	1/2"	1.20"	1.10"	1/4"	5/8"	1.3/4"
NFC8-6	2018-7498	1/2"	3/8"	1.375"	1.20"	3/16"	1/2"	1.9/16"
NFC8-8	2018-7506	1/2"	1/2"	1.375"	1.20"	1/4"	5/8"	1.3/4"
NFC8-12	2018-7514	1/2"	3/4"	1.375"	1.30"	5/16"	3/4"	1.15/16"
NFC16-16	2018-7530	1"	1"	2.05"	1.67"	7/16"	7/8"	2.9/32"