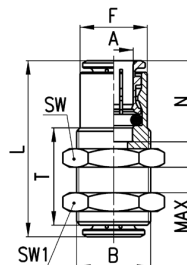




CATALOGUE > Release 8.7

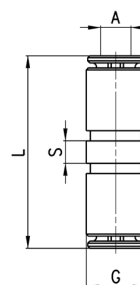
CONNECTION > Series 6000 super-rapid fittings

Fittings Mod. 6590
Bulkhead Connector



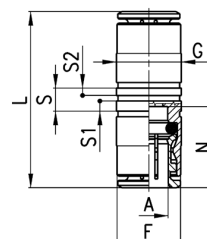
DIMENSIONS										
Mod.	A	B	F	L	N	MAX	SW	SW1	T	Weight (g)
6590 4	4	M10x1	8.8	29	14	10.5	14	14	20	16
6590 5	5	M12x1	9.8	31	15	10.5	17	17	20	25
6590 6	6	M14x1	12.5	33	16	10.5	17	17	20	28
6590 8	8	M16x1	14.5	36	17.5	11.5	19	19	21	35
6590 10	10	M18x1	16.3	41.5	20.2	13	22	22	23.5	51
6590 12	12	M20x1	18.8	39.5	19.2	14.5	24	24	25	56
6590 14	14	M22x1	20.5	41.5	20.2	17.5	27	27	30	82

Fittings Mod. 6580 Micro
Union Connector



DIMENSIONS					
Mod.	A	G	L	S	Weight (g)
6580 3	3	5.8	19.9	2.2	2

Fittings Mod. 6580
Union Connector



DIMENSIONS										
Mod.	A	F	G	L	N	S	S1	S2	Weight (g)	
6580 4	4	8.4	9	29	14	5	2.2	1.6	11	
6580 5	5	9.4	10	31	15	5	2.2	1.6	15	
6580 6	6	11.7	12	34	16	5	2.2	1.6	16	
6580 8	8	13.7	14	37	17.5	5	2.2	1.6	23	
6580 10	10	15.4	17	41.5	20.2	5	2.2	1.6	33	
6580 12	12	18.3	19	39.5	19.2	5.2	2.2	1.6	40	
6580 14	14	20.5	21	41.5	20.2	5.2	2.2	1.6	47	