

# Hydraulic Couplings



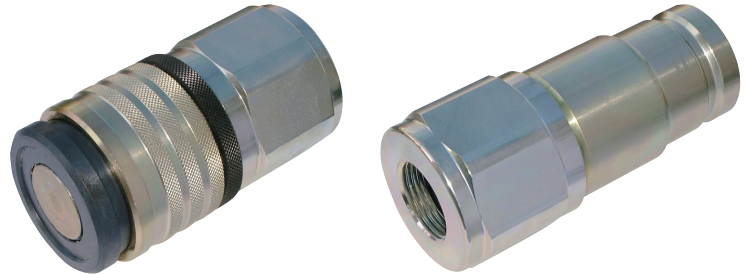
## TFF5000/TFF7500/TFF10000 Series

### Technical Description

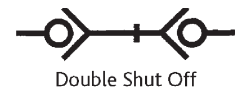
The coupling system of the TFF series has double shut-off, dry break and single-handed operation. During disconnection there is no oil loss, and during coupling there is no inclusion of air into the system.

### Advantages

- Dry break quick connect coupling with minimum pressure drop.
- Single-handed operation.
- No oil loss during disconnection.
- A safety closing ring prevents unintentional disconnection.
- Twice as safe through double sealing.
- Also available with pressure eliminator, i.e. connection is possible under static/residual pressure up to working pressure.



**Working Pressure**  
See charts.

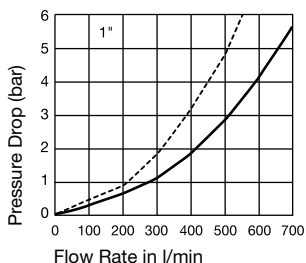
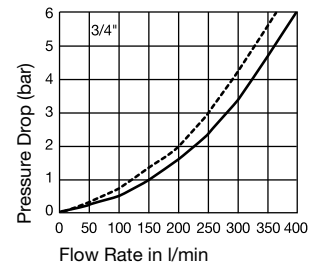
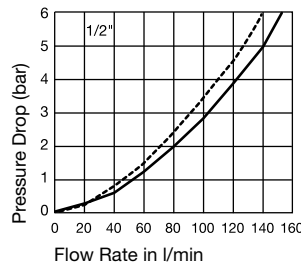
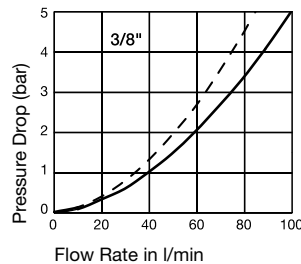
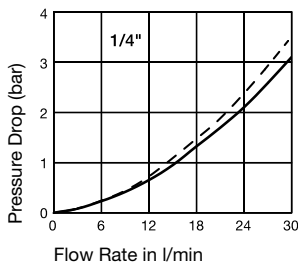


**Working Temperature**  
-30°C up to +100°C (NBR), -25°C up to +200°C (FKM) depending on the medium.  
Special seals are available on request.

| Body Size | Bursting Pressure connected |
|-----------|-----------------------------|
| 1/4"      | > 3200 bar                  |
| 3/8"      | > 2000 bar                  |
| 1/2"      | > 1500 bar                  |
| 3/4"      | > 1500 bar                  |
| 1"        | > 1100 bar                  |

| Material Coupling | Standard / Pressure Eliminator                    |
|-------------------|---|
| Coupling Body     | Steel, nitrocarburizing                           |
| Sleeve            | Steel hardened, zinc plated, passivated, sealed   |
| Locking Ring      | Brass, zinc-iron coated, black passivated, sealed |
| Valve             | Steel, zinc plated, passivated, sealed            |
| Springs           | AISI 301  |
| Locking           | Balls AISI 420 C                                  |
| Seals             | NBR   |
| Valve Holder      | Steel, yellow zinc plated, sealed                 |
| Thread Body       | Steel, zinc plated, passivated, sealed            |
| Plug              | Standard / Pressure Eliminator                    |
| Plug Body         | Steel hardened, zinc plated, passivated, sealed   |
| Valve             | Steel, nitrocarburizing                           |
| Springs           | AISI 301  |
| Seals             | NBR/PUR   |
| Valve Holder      | Brass, hard-drawn                                 |
| Thread Body       | Steel, zinc plated, passivated, sealed            |

### Flow Capacity with Oil with Viscosity of 32cSt at 40°C as per ISO 7241/2-2000

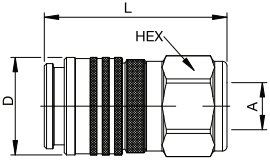


— Standard FF  
- - - Plug side pressure eliminator

# Hydraulic Couplings

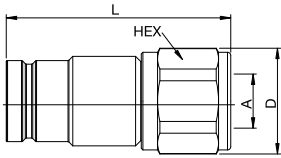


## TFF5000/TFF7500/TFF10000 Series



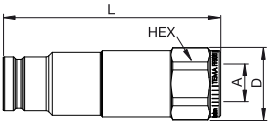
Female Thread

| Couplings |              |        |      |      |                             |          |         |              |
|-----------|--------------|--------|------|------|-----------------------------|----------|---------|--------------|
| Body Size | Connection A | Hex mm | L mm | D mm | Working Pressure Connection | Version  | Seal    | Part Number  |
| 1/2"      | G 1/2        | 40     | 82   | 44   | 450 bar                     | Standard | NBR/PUR | TE-TFF5010   |
| 1/2"      | G 1/2        | 40     | 82   | 44   | 450 bar                     | Standard | FKM     | TE-TFF5010 V |
| 3/4"      | G 3/4        | 50     | 98   | 55   | 400 bar                     | Standard | NBR     | TE-TFF7510   |



Female Thread

| Plugs     |              |        |      |      |                             |          |         |              |
|-----------|--------------|--------|------|------|-----------------------------|----------|---------|--------------|
| Body Size | Connection A | Hex mm | L mm | D mm | Working Pressure Connection | Version  | Seal    | Part Number  |
| 1/2"      | G 1/2        | 36     | 86   | 39   | 450 bar                     | Standard | NBR/PUR | TE-TFF5020   |
| 1/2"      | G 1/2        | 36     | 86   | 39   | 450 bar                     | Standard | FKM     | TE-TFF5020 V |
| 3/4"      | G 3/4        | 46     | 101  | 50   | 400 bar                     | Standard | NBR/PUR | TE-TFF7520   |



Female Thread

| Plugs     |              |        |      |      |                             |                     |         |             |
|-----------|--------------|--------|------|------|-----------------------------|---------------------|---------|-------------|
| Body Size | Connection A | Hex mm | L mm | D mm | Working Pressure Connection | Version             | Seal    | Part Number |
| 3/4"      | G 3/4        | 46     | 139  | 50   | 400                         | Pressure Eliminator | NBR/PUR | TE-TFF7521  |
| 1"        | G 1          | 55     | 175  | 60   | 350                         | Pressure Eliminator | NBR/PUR | TE-TFF10021 |