

# Electropneumatically and pneumatically operated valves Series 3

2

2x3/2, 3/2, 5/2 and 5/3 ways C.C. C.O. C.P.  
Ports G1/8 and G1/4



The G1/8 and G1/4 Series 3 solenoid valves have been designed with 3/2, 2 x 3/2, 5/2, 5/3 in two main versions which are:

- Electropneumatically actuated with mechanical spring return
- Electropneumatically actuated with external and internal air pressure supply

The Series 3 valves can be operated by Series U or G solenoids (22x22).

The Series 3 is equipped with a manual override which allows a stable operation.

## GENERAL DATA

<b>Construction</b>	spool - type (pilot operated)
<b>Valve group</b>	way / pos. 2x3/2 - 3/2 - 5/2 - 5/3 C.C. C.O. C.P.
<b>Materials</b>	aluminium body, stainless steel spool, NBR seals
<b>Ports</b>	G1/8 - G1/4
<b>Installation</b>	in any position
<b>Operating temperature</b>	0 + 60°C (with dry air at -20°C)
<b>Operating pressure</b>	see tables
<b>Fluid</b>	filtered air, without lubricant. If lubricated air is used, it is recommended to use ISOVG32 oil. Once applied the lubrication should never be interrupted.

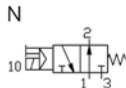
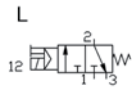
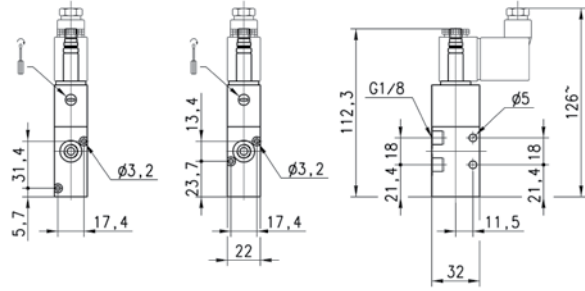
## CODING EXAMPLE

3	3	8	D	-	015	-	02	-	U	7	7
---	---	---	---	---	-----	---	----	---	---	---	---

<b>3</b>	SERIES
<b>3</b>	N° OF PORTS/POSITIONS: 3 = 3/2 N.C. 4 = 3/2 N.O. 5 = 5/2 6 = 5/3 C. closed 7 = 5/3 C. open 8 = 5/3 C. pressure 9 = 1x 3/2 N.C. + 1x-3/2 N.O.
<b>8</b>	PORTS: 8 = G1/8 4 = G1/4
<b>D</b>	D = double valve 2x3/2 L = for manifold assembly (only for 3/2 G1/8)
<b>015</b>	ACTUATION: 011 = double solenoid 015 = single solenoid, spring return 016 = single solenoid, pneumatic spring return (horizontal solenoid) E11 = double solenoid external servo-command E15 = single solenoid, external servo-command 033 = pneumatic pneumatic 035 = pneumatic spring
<b>22</b>	SOLENOID INTERFACE: 02 = mech. sol. 22 x 22
<b>U</b>	SOLENOID MATERIAL: U = PET G = PA A8 = PPS H8 = PA 6 V0 A7 = PPS
<b>7</b>	SOLENOID DIMENSIONS: 7 = 22 x 22 8 = 30 x 30
<b>7</b>	SOLENOID VOLTAGE: See page solenoids 2.2.35.01

3/2-way solenoid valve, G1/8, monostable Mod. 338..., Mod 348...

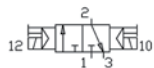
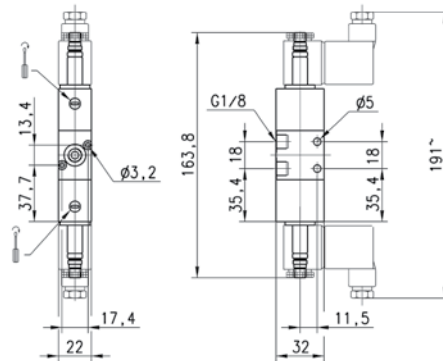
The Series 3, G1/8, 3/2-way solenoid valves, which have electropneumatic actuation and spring return, are available in the N.C. (closed) or N.O. (open) version.



Mod.	Mounting	Function	Flow rate NI/min	Operating pressure (bar)	Symbol
338-015-02	without base	3/2 N.C.	700	2 + 10	L
338L-015-02	on manifold	3/2 N.C.	700	2 + 10	L
348-015-02	without base	3/2 N.O.	700	2 + 10	N
348L-015-02	on manifold	3/2 N.O.	700	2 + 10	N

3/2-way solenoid valve, G1/8, bistable Mod. 338...

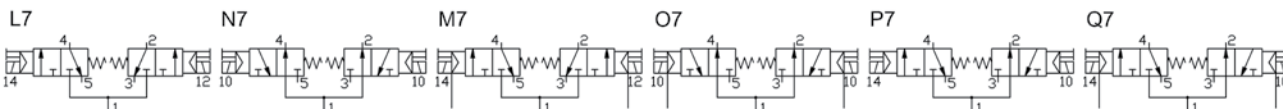
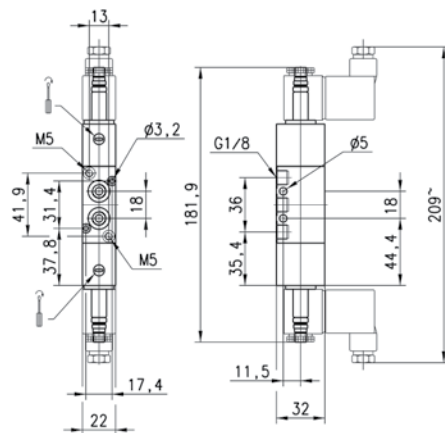
The Series 3, G1/8, 3/2-way solenoid valves, which have electropneumatic actuation and return, assume the N.C. (closed) or N.O. (open) position depending on the last pulse received.



Mod.	Mounting	Function	Flow rate NI/min	Operating pressure (bar)
338-011-02	without base	3/2	700	2 + 10
338L-011-02	on manifold	3/2	700	2 + 10

2x3/2 way solenoid valve, G1/8 Mod. 338D, Mod. 348D, Mod. 398D

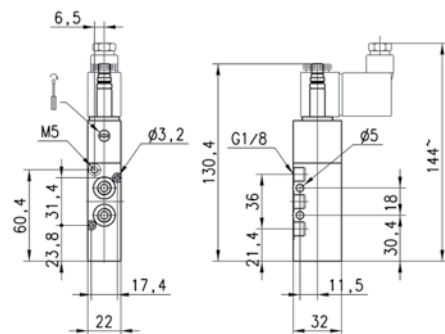
The Series 3, G1/8 solenoid valves are available in versions with 2 3/2 valves in the same valve.



Mod.	Function	Flow rate NI/min	Operating pressure (bar)	Pilot pressure (bar)	Symbol
338D-015-02	2 X 3/2 N.C.	700	2 + 10	-	L7
348D-015-02	2 X 3/2 N.O.	700	2 + 10	-	N7
338D-E15-02	2 X 3/2 N.C.	700	0 + 10	2 + 10	M7
348D-E15-02	2 X 3/2 N.O.	700	0 + 10	2 + 10	O7
398D-015-02	1 X 3/2N.C.+1X3/2N.O.	700	2 + 10	-	P7
398D-E15-02	1 X 3/2N.C.+1X3/2N.O.	700	0 + 10	2 + 10	Q7

5/2-way solenoid valve, G1/8, monostable Mod. 358...

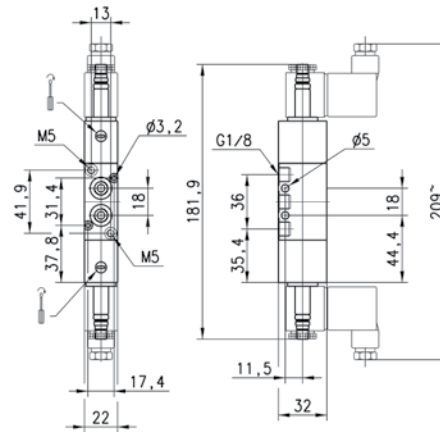
The Series 3, G1/8 5/2-way solenoid valves, which have electropneumatic actuation and spring return, are suitable for operating double-acting cylinders.



Mod.	Function	Flow rate NI/min	Operating pressure (bar)	Pilot pressure (bar)	Symbol
358-015-02	5/2	700	2 + 10	-	V
358-E15-02	5/2	700	-0,9 + 10	2 + 10	R7
358-016-02	5/2	700	2 + 10	-	Z

5/2-way solenoid valve, G1/8, bistable Mod. 358...

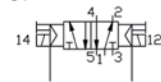
The Series 3, G1/8 5/2-way solenoid valves, which have electropneumatic actuation and spring return, are suitable for operating double-acting cylinders.



A1



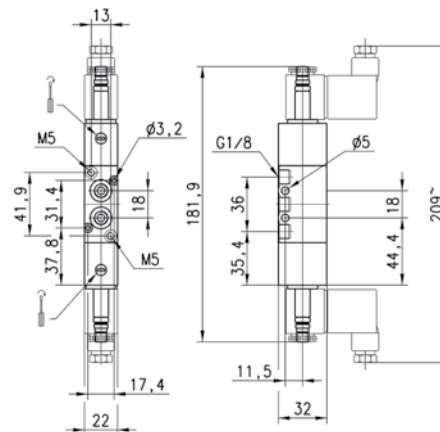
S7



Mod.	Function	Flow rate NI/min	Operating pressure (bar)	Pilot pressure (bar)	Symbol
358-011-02	5/2	700	1,5 + 10	-	A1
358-E11-02	5/2	700	-0,9 + 10	1,5 + 10	S7

5/3-way solenoid valve, G1/8, Mod. 368... Mod. 378... Mod. 388...

C.C. = Centres closed C.O. = Centres open C.P. = Pressure centres



B1



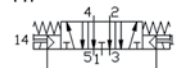
G7



C1



H7



D1



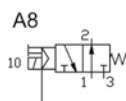
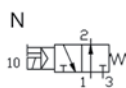
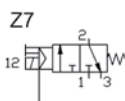
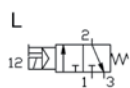
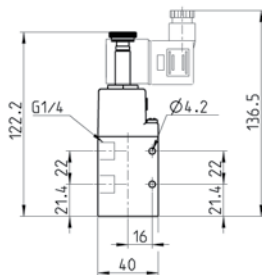
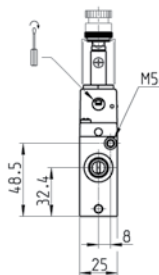
I7



Mod.	Function	Flow rate NI/min	Operating pressure (bar)	Pilot pressure (bar)	Symbol
368-011-02	5/3 C.C.	700	2 + 10	-	B1
368-E11-02	5/3 C.C.	700	-0,9 + 10	2 + 10	G7
378-011-02	5/3 C.O.	700	2-10	-	C1
378-E11-02	5/3 C.O.	700	-0,9 + 10	2 + 10	H7
388-011-02	5/3 C.P.	700	2 + 10	-	D1
388-E11-02	5/3 C.P.	700	-0,9 + 10	2 + 10	I7

3/2-way solenoid valve, G1/4, monostable Mod. 334... Mod 344...

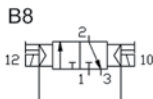
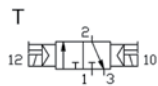
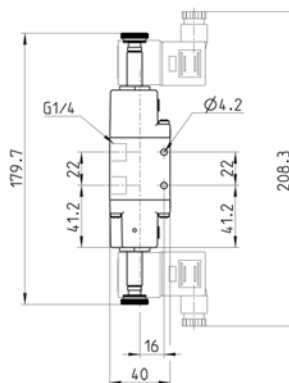
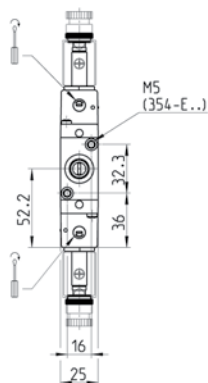
The Series 3, G1/4, 3/2-way solenoid valves, which have electropneumatic actuation and spring return, are available in the N.C. (closed) or N.O.(open) version.



Mod.	Mounting	Function	Flow rate NI/min	Operating pressure (bar)	Pilot pressure (bar)	Symbol
334-015-02	without base	3/2 N.C.	1300	2,5 ÷ 10	-	L
334-E15-02	without base	3/2 N.C.	1300	-0,9 ÷ 10	2,5 ÷ 10	Z7
344-015-02	without base	3/2 N.O.	1300	2,5 ÷ 10	-	N
344-E15-02	without base	3/2 N.O.	1300	-0,9 ÷ 10	2,5 ÷ 10	A8

Solenoid valve 3/2 way G1/4, bistable - Mod. 334...

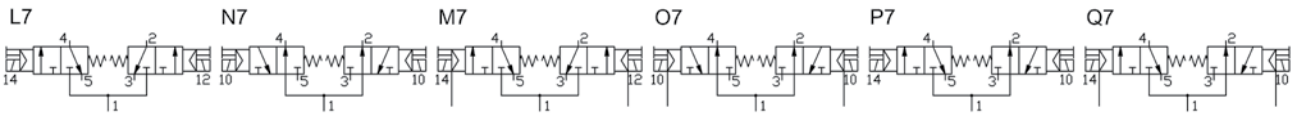
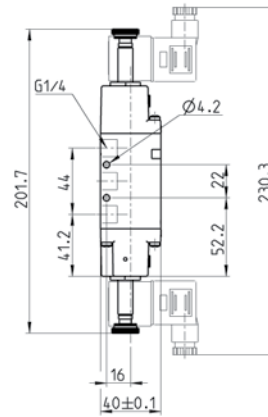
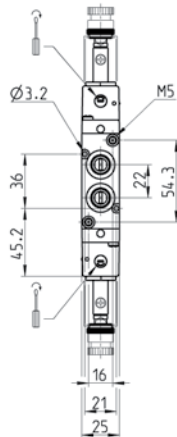
The Series 3, G1/4 3/2 way solenoid valves, which have electropneumatic actuation and return assume the N.C. (closed) or N.O. (open) position depending on their last pulse received.



Mod.	Mounting	Function	Flow rate NI/min	Operating pressure (bar)	Pilot pressure (bar)	Symbol
334-011-02	without base	3/2	1300	2,5 ÷ 10	-	T
334-E11-02	without base	3/2	1300	-0,9 ÷ 10	2,5 ÷ 10	B8

2x3/2 way solenoid valve, G1/4 Mod. 334D Mod. 344D Mod. 394D

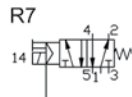
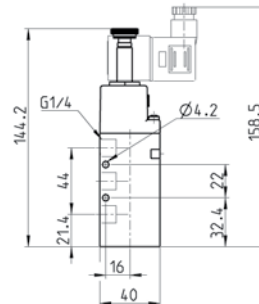
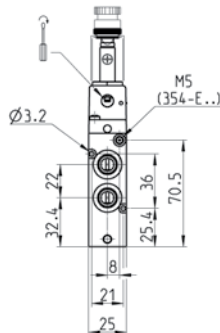
The Series 3, G1/4 solenoid valves are available in versions with 2 3/2 valves in the same valve.



Mod.	Function	Flow rate NI/min	Operating pressure (bar)	Pilot pressure (bar)	Symbol
334D-015-02	2 X 3/2 N.C.	1200	2,5 ÷ 10	-	L7
344D-015-02	2 X 3/2 N.O.	1050	2,5 ÷ 10	-	N7
334D-E15-02	2 X 3/2 N.C.	1200	-0,9 ÷ 10	2,5 ÷ 10	M7
344D-E15-02	2 X 3/2 N.O.	1050	-0,9 ÷ 10	2,5 ÷ 10	O7
394D-015-02	1X3/2 N.C. +1X3/2 N.O.	1050	2 ÷ 10	-	P7
394D-E15-02	1X3/2 N.C. +1X3/2 N.O.	1050	-0,9 ÷ 10	2,5 ÷ 10	Q7

5/2-way solenoid valve, G1/4, monostable Mod. 354...

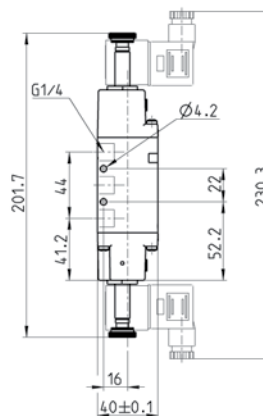
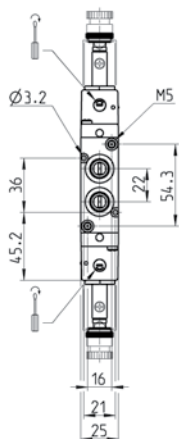
The Series 3, G1/4 5/2-way solenoid valves, which have electropneumatic actuation and spring return, are suitable for operating double-acting cylinders.



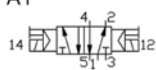
Mod.	Function	Flow rate NI/min	Operating pressure (bar)	Pilot pressure (bar)	Symbol
354-015-02	5/2	1300	2,5 ÷ 10	-	V
354-E15-02	5/2	1300	-0,9 ÷ 10	2,5 ÷ 10	R7

5/2-way solenoid valve, G1/4, bistable Mod. 354...

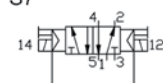
The Series 3, G1/4 5/2-way solenoid valves, which have electropneumatic actuation and spring return, are suitable for operating double-acting cylinders.



A1



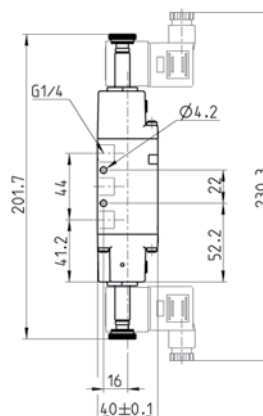
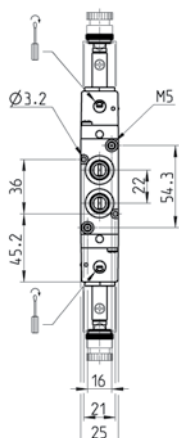
S7



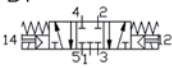
Mod.	Function	Flow rate NI/min	Operating pressure (bar)	Pilot pressure (bar)	Symbol
354-011-02	5/2	1300	2,5 + 10	-	A1
354-E11-02	5/2	1300	-0,9 + 10	2,5 + 10	S7

5/3-way solenoid valve, G1/4, Mod. 364... Mod. 374... Mod. 384...

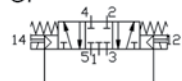
C.C. = Centres closed C.O. = Centres open C.P. = Pressure centres



B1



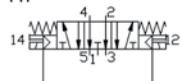
G7



C1



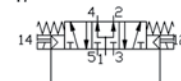
H7



D1



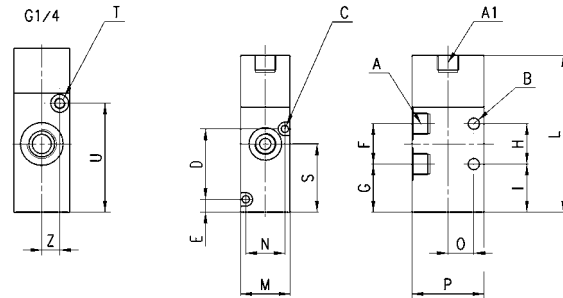
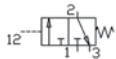
I7



Mod.	Function	Flow rate NI/min	Operating pressure (bar)	Pilot pressure (bar)	Symbol
364-011-02	5/3 C.C.	1200	2,5 + 10	-	B1
364-E11-02	5/3 C.C.	1200	-0,9 + 10	2,5 + 10	G7
374-011-02	5/3 C.O.	1200	2,5 + 10	-	C1
374-E11-02	5/3 C.O.	1200	-0,9 + 10	2,5 + 10	H7
384-011-02	5/3 C.P.	1200	2,5 + 10	-	D1
384-E11-02	5/3 C.P.	1200	-0,9 + 10	2,5 + 10	I7



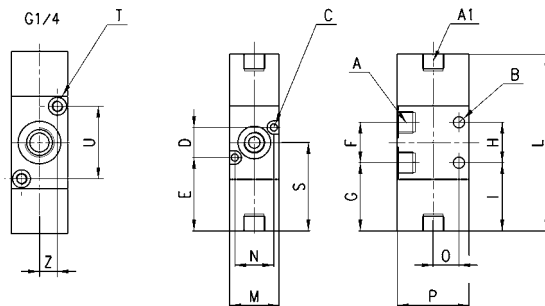
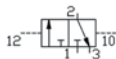
3/2 way valve, G1/8 or G1/4, monostable



DIMENSIONS

Mod.	Mounting	Function	Flow rate NI/min	min. pil P.	A	A1	B	C	D	E	F	G	H	I	L	M	N	O	P	S	T	U	Z
338-035	without base	3/2 N.C.	700	3 bar	G1/8	G1/8	5	3,2	-	5,7	18	21,4	18	21,4	69,8	22	-	11,5	32	30,4	-	-	-
338L-035	on manifold	3/2 N.C.	700	3 bar	G1/8	G1/8	-	3,2	31,4	5,7	18	21,4	-	21,4	69,8	22	17,4	11,5	32	30,4	-	-	-
334-035	without base	3/2 N.C.	1300	3 bar	G1/4	-	4,1	-	-	-	22	21,4	22	21,4	73	25	-	16	40	32,4	M5	48,5	8

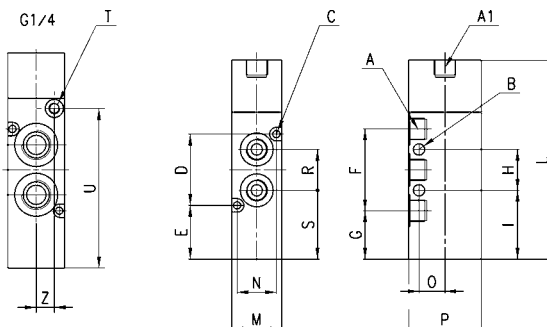
3/2 way valve, G1/8 or G1/4, bistable



DIMENSIONS

Mod.	Mounting	Function	Flow rate NI/min	min. pil P.	A	A1	B	C	D	E	F	G	H	I	L	M	N	O	P	S	T	U	Z
338-033	without base	3/2 N.C.	700	2,5 bar	G1/8	G1/8	5	-	-	-	18	30,4	18	30,4	78,8	22	-	11,5	32	41,7	-	-	-
338L-033	on manifold	3/2 N.C.	700	2,5 bar	G1/8	G1/8	5	3,2	13,4	32,7	18	30,4	-	30,4	78,8	22	17,4	-	32	41,7	-	-	-
334-033	without base	3/2 N.C.	1300	2,5 bar	G1/4	-	4,1	-	-	-	22	29,7	22	29,7	81,3	25	-	16	40	40,7	M5	-	-

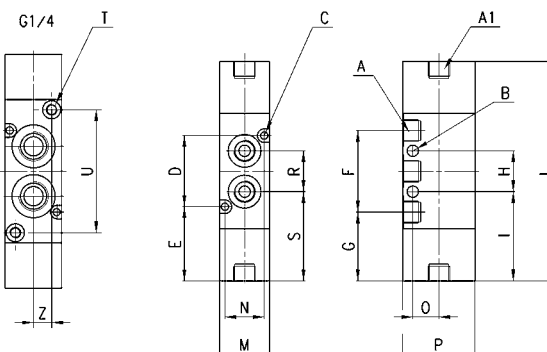
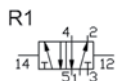
5/2 way valve, G1/8 or G1/4, monostable



DIMENSIONS

Mod.	Mounting	Function	Flow rate NI/min	min. pil P.	A	A1	B	C	D	E	F	G	H	I	L	M	N	O	P	S	T	U	Z
358-035	without base/on manifold	3/2 N.C.	700	3 bar	G1/8	G1/8	5	3,2	31,4	23,8	36	21,4	18	30,4	87,8	22	17,4	11,5	32	30,4	-	-	-
354-035	without base/on manifold	3/2 N.C.	1300	3 bar	G1/4	-	4,1	3,2	36	25,4	44	21,4	22	30,4	95	25	21	16	40	32,4	M5	70,5	8

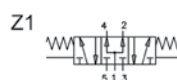
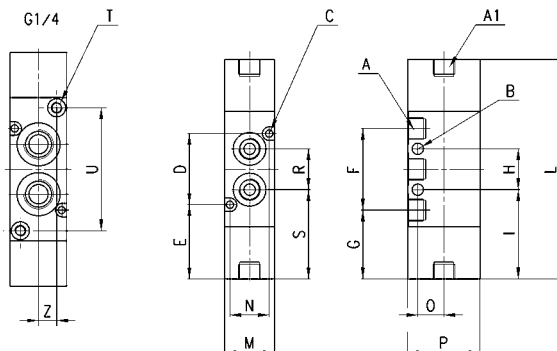
5/2 way valve, G1/8 or G1/4, bistable



DIMENSIONS

Mod.	Mounting	Function	Flow rate NI/min	min. pil P.	A	A1	B	C	D	E	F	G	H	I	L	M	N	O	P	S	T	U	Z
358-033	without base/on manifold	5/2	700	2,5 bar	G1/8	G1/8	5	3,2	31,4	32,8	36	30,4	18	39,4	96,8	22	17,4	11,5	32	39,4	-	-	-
354-033	without base/on manifold	5/2	1300	2,5 bar	G1/4	-	4,1	3,2	36	33,7	44	29,7	22	40,7	103,3	25	21	16	40	40,7	M5	54,3	8

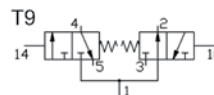
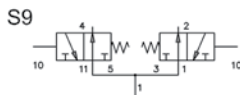
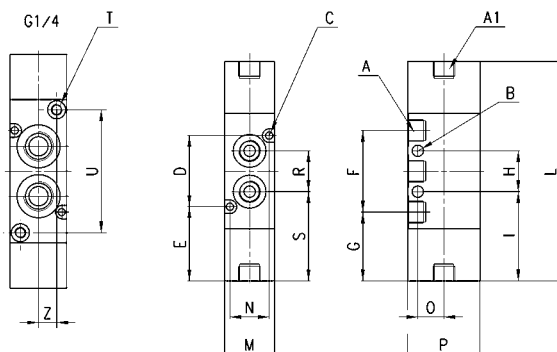
5/3 way valve, G1/8 or G1/4



DIMENSIONS

Mod.	Mounting	Function	Flow rate NI/min	min. pil P.	A	A1	B	C	D	E	F	G	H	I	L	M	N	O	P	S	T	U	Z	Symbol
368-033	without b./on man.	5/3 C.C.	700	2,5	G1/8	G1/8	5	3,2	31,4	32,8	36	30,4	18	39,4	96,8	22	17,4	11,5	32	39,4	-	-	-	U1
364-033	without b./on man.	5/3 C.C.	1200	2,5	G1/4	-	4,1	3,2	36	33,7	44	29,7	22	40,7	103,3	25	21	16	40	40,7	M5	54,3	8	U1
378-033	without b./on man.	5/3 C.O.	700	2,5	G1/8	G1/8	5	3,2	31,4	32,8	36	30,4	18	39,4	96,8	22	17,4	11,5	32	39,4	-	-	-	V1
374-033	without b./on man.	5/3 C.O.	1050	2,5	G1/4	-	4,1	3,2	36	33,7	44	29,7	22	40,7	103,3	25	21	16	40	40,7	M5	54,3	8	V1
388-033	without b./on man.	5/3 C.P.	700	2,5	G1/8	G1/8	5	3,2	31,4	32,8	36	30,4	18	39,4	96,8	22	17,4	11,5	32	39,4	-	-	-	Z1
384-033	without b./on man.	5/3 C.P.	1050	2,5	G1/4	-	4,1	3,2	36	33,7	44	29,7	22	40,7	103,3	25	21	16	40	40,7	M5	54,3	8	Z1

2x 3/2 way valve, G1/8 or G1/4



DIMENSIONS

Mod.	Mounting	Function	Flow rate NI/min	min. pil P.	A	A1	B	C	D	E	F	G	H	I	L	M	N	O	P	S	T	U	Z	Symb.
338D-035	no base/on man.	2x3/2 N.C.	700	2,5	G1/8	G1/8	5	3,2	31,4	32,8	36	30,4	18	39,4	96,8	22	17,4	11,5	32	39,4	-	-	-	R9
334D-035	no base/on man.	2x3/2 N.C.	1050	2,5	G1/4	-	4,1	3,2	36	33,7	44	29,7	22	40,7	103,3	25	21	16	40	40,7	M5	54,3	8	R9
348D-035	no base/on man.	2x3/2 N.O.	700	2,5	G1/8	G1/8	5	3,2	31,4	32,8	36	30,4	18	39,4	96,8	22	17,4	11,5	32	39,4	-	-	-	S9
344D-035	no base/on man.	2x3/2 N.O.	1050	2,5	G1/4	-	4,1	3,2	36	33,7	44	29,7	22	40,7	103,3	25	21	16	40	40,7	M5	54,3	8	S9
398D-035	no base/on man.	2x3/2 N.C.-N.O.	700	2,5	G1/8	G1/8	5	3,2	31,4	32,8	36	30,4	18	39,4	96,8	22	17,4	11,5	32	39,4	-	-	-	T9
394D-035	no base/on man.	2x3/2 N.C.-N.O.	1050	2,5	G1/4	-	4,1	3,2	36	33,7	44	29,7	22	40,7	103,3	25	21	16	40	40,7	M5	54,3	8	T9

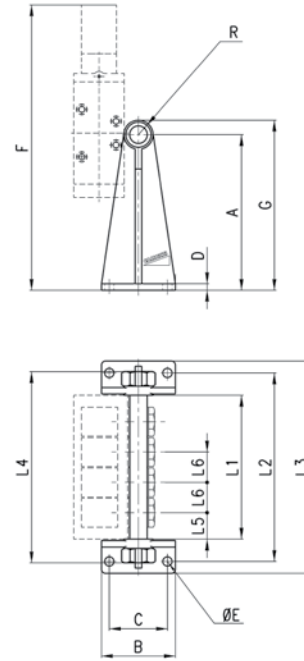
Manifold bars with separate exhausts (low version)

out of production



The following is supplied:

- 2x feet
- 1x manifold
- 1x inlet fitting
- 1x plug
- 4x washers



DIMENSIONS																
Mod.	N° of valves	A	B	C	D	ØE	F	G	R	L1	L2	L3	L4	L5	L6	Suitable for
<b>CNV-318-2</b>	2	73	56	44	5	7	178	83	G1/4	63	97	115	99	20	23	3 - G1/8
<b>CNV-318-3</b>	3	73	56	44	5	7	178	83	G1/4	86	120	138	119	20	23	3 - G1/8
<b>CNV-318-4</b>	4	73	56	44	5	7	178	83	G1/4	109	143	161	142	20	23	3 - G1/8
<b>CNV-318-5</b>	5	73	56	44	5	7	178	83	G1/4	132	166	184	165	20	23	3 - G1/8
<b>CNV-318-6</b>	6	73	56	44	5	7	178	83	G1/4	155	189	207	188	20	23	3 - G1/8

The fixing screws of the valves mod. 1635-01 and the washers mod.2661 must be ordered separately.

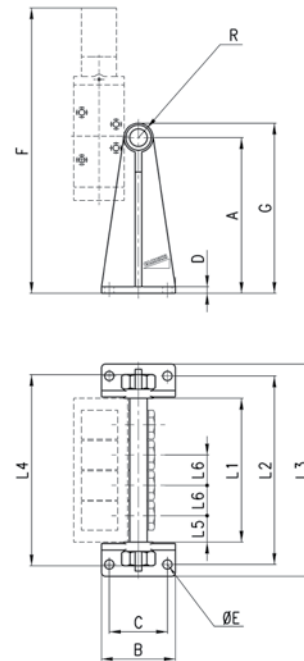
Manifold bars with separate exhausts (high version)

out of production



The following is supplied:

- 2x feet
- 1x manifold
- 1x inlet fitting
- 1x plug
- 4x washers



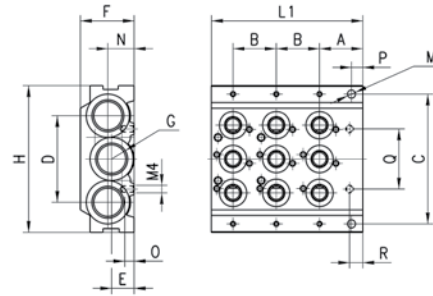
DIMENSIONS																
Mod.	N° of valves	A	B	C	D	ØE	F	G	R	L1	L2	L3	L4	L5	L6	Suitable for
<b>CNV-328-2</b>	2	118	56	44	5	7	223	128	G1/4	63	97	115	99	20	23	3 - G1/8
<b>CNV-328-3</b>	3	118	56	44	5	7	223	128	G1/4	86	120	138	119	20	23	3 - G1/8
<b>CNV-328-4</b>	4	118	56	44	5	7	223	128	G1/4	109	143	161	142	20	23	3 - G1/8
<b>CNV-328-5</b>	5	118	56	44	5	7	223	128	G1/4	132	166	184	165	20	23	3 - G1/8
<b>CNV-328-6</b>	6	118	56	44	5	7	223	128	G1/4	155	189	207	188	20	23	3 - G1/8

The fixing screws of the valves mod. 1635-01 and the washers mod.2661 must be ordered separately.

Basic Module with three positions - Mod. CNVL-...

The following is supplied:

- 3x O-Rings
- 2x fixing nuts
- 2x junction plugs
- 9x interface seals
- 6x fixing screws



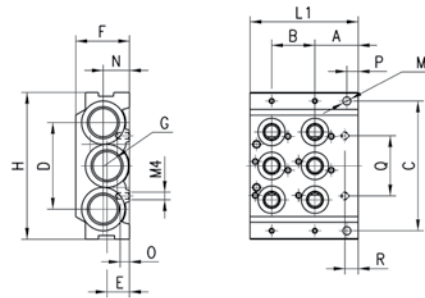
DIMENSIONS

Mod.	A	B	C	D	E	F	H	L1	M	N	O	P	Q	R	G
<b>CNVL-3H3</b>	23	23	69,5	46	12	29	78	80,5	4,3	14	5	6	32	7	3/8
<b>CNVL-4H3</b>	26	26	88	60	14	29	98	91	4,3	-	5	5	38	7	1/2

Basic module with 2 positions - Mod. CNVL-...

The following is supplied:

- 3x O-Rings
- 2x fixing nuts
- 2x junction plugs
- 6x interface seals
- 4x fixing screws



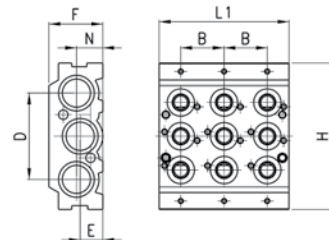
DIMENSIONS

Mod.	A	B	C	D	E	F	H	L1	M	N	O	P	Q	R	G
<b>CNVL-3H2</b>	23	23	69,5	46	12	29	78	57,5	4,3	14	5	6	32	7	3/8
<b>CNVL-4H2</b>	26	26	88	60	14	29	98	65	4,3	-	5	5	38	7	1/2

Intermediate module with 3 positions - Mod. CNVL-...

The following is supplied:

- 3x O-Rings
- 2x fixing nuts
- 2x junction plugs
- 9x interface seals
- 6x fixing screws



DIMENSIONS

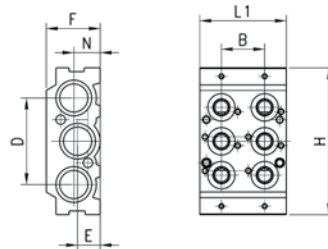
Mod.	B	D	E	F	H	L1	N
<b>CNVL-3I3</b>	23	46	12	29	78	69	14
<b>CNVL-4I3</b>	26	60	14	29	98	65	-

Intermediate module with 2 positions - Mod. CNVL-...



The following is supplied:

- 3x O-Rings
- 2x fixing nuts
- 2x junction plugs
- 6x interface seals
- 4x fixing seals



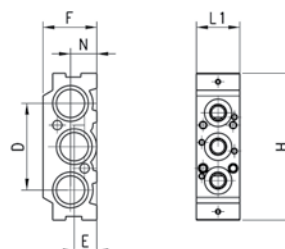
DIMENSIONS							
Mod.	B	D	E	F	H	L1	N
<b>CNVL-3I2</b>	23	46	12	29	78	46	14
<b>CNVL-4I2</b>	26	60	14	29	98	52	-

Intermediate module with 1 position - Mod. CNVL-...



The following is supplied:

- 3x O-Rings
- 2x fixing nuts
- 2x junction plugs
- 3x interface seals
- 2x fixing seals



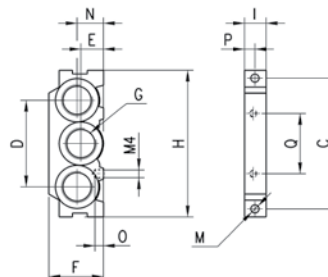
DIMENSIONS						
Mod.	D	E	F	H	L1	N
<b>CNVL-3I1</b>	46	12	29	78	23	14
<b>CNVL-4I1</b>	60	14	29	98	26	-

Terminal module Mod. CNVL-3H



The following is supplied:

- 2x fixing nuts



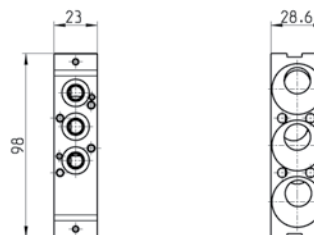
DIMENSIONS												
Mod.	C	D	E	F	H	I	M	N	O	P	Q	G
<b>CNVL-3H</b>	69,5	46	12	29	78	11,5	4,3	14	5	6	32	3/8
<b>CNVL-4H</b>	88	60	14	29	98	13	4,3	-	5	8	29	1/2

Interface module manifold between G1/4 and G1/8 (Series 3)



The following is supplied:

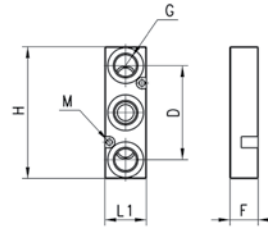
- 1x interface seal
- 2x screws
- 2x pins
- 2x plugs
- 6x O-Rings



Mod.
<b>CNVL-4H-3H</b>

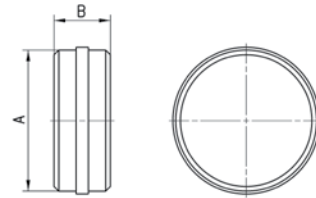
**Intermediate plate for additional inlet and exhaust pressure**

The following is supplied:  
 3x O-Rings  
 2x fixing screws



DIMENSIONS								
Mod.	Series	G	H	M	F	L1	D	F
<b>CNVL-3P</b>	3 1/8	G1/4	70	3,2	29	22	50	15
<b>CNVL-4P</b>	3 1/4	G1/4	73	3,2	29	25	50	20

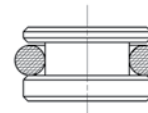
**Diaphragm**



DIMENSIONS				
Mod.	Series	A	B	Supply
<b>CNVL-3H-TP</b>	3 G1/8	15,6	6	Channels diaphragm 1; 3; 5
<b>CNVL-4H-TP</b>	3 G1/4	23,8	8	Channels diaphragm 1; 3; 5

**Blanking plug for TCNVL manifolds**

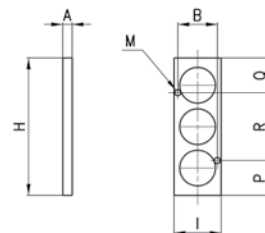
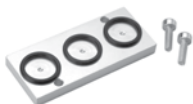
The following is supplied:  
 1x blanking plug  
 1x O-Ring



DIMENSIONS	
Mod.	Series
<b>TCNVL/3</b>	Serie 3 G1/8

**Blanking plate for CNVL manifolds, Mod. CNVL...**

The item is used to blank one or more stations on a manifold baseMod.CNVL...,  
 The following is supplied:  
 2x fixing screws  
 3x O-Rings



DIMENSIONS									
Mod.	Series	A	B	H	I	M	P	Q	R
<b>CNVL-1</b>	Series 3 G1/8	5	17,4	52	22	3,2	10,3	10,3	31,4
<b>CNVL-4</b>	Series 3 G1/4	5	21	73	25	3,2	18,5	18,5	36