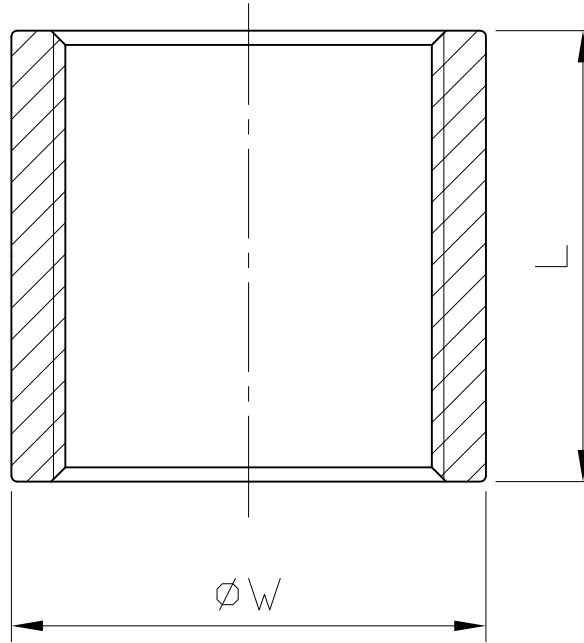


Ra	▽▽▽▽
0.2	▽▽▽▽
1.6	▽▽▽
6.3	▽▽
25	▽
∅	~

± 0.1	0.5-5
± 0.2	6-30
± 0.3	31-120
± 0.5	121-320
± 0.8	321-1000
GENERAL TOLERANCE	

COUPLING



SIZE	1/8"		1/4"		3/8"		1/2"		3/4"		1"		1-1/4"		1-1/2"		2"		2-1/2"		3"		4"	
	mm	in	mm	in	mm	in	mm	in	mm	in	mm	in	mm	in	mm	in	mm	in	mm	in	mm	in	mm	in
L	20	0.79	25	0.98	25	0.98	33	1.3	35	1.38	42.5	1.67	46.5	1.83	46	1.81	54.5	2.15	65	2.56	69	2.72	79	3.11
W	13.5	0.53	18	0.71	21.5	0.85	26	1.02	31.5	1.24	39	1.54	47.5	1.87	54	2.13	66.5	2.62	83	3.27	95	3.74	122	4.8

Tolerance: ± 0.5mm(1/8"~2")
± 0.8mm(2-1/2"~4")

HAITIMA CORPORATION
P.O.BOX 34-36 TAIPEI
Tel:+886-2-26585800
E-mail:haitima@seednet.tw
TAIWAN R.O.C. www.haitima.com.tw
Fax:+886-2-26582266



HAITIMA CORPORATION
Ball Valves & Pipe Fittings

CHECK BY	DRAWING BY	DATE	SPECIFICATION	Coupling					
	<i>Dune</i>	May.20.2008	MATERIAL	304/316					
			PROCESS/Nr.						
			UNIT / SCALE	mm					
						Revise	Description	Date	Approve
						DRAWING NO. F22			-08