

**Caratteristiche Tecniche:**

- Materiale: Alluminio
- Trattamento: Barillatura

**Technical Specifications:**

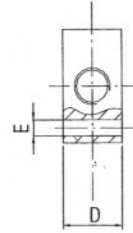
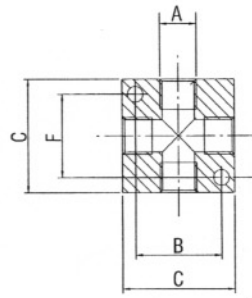
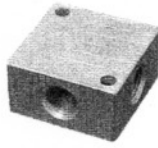
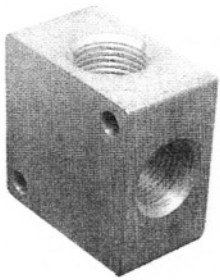
- Materials: Aluminium
- Treatment: Tumbling

**Technische Eigenschaften:**

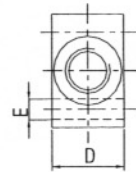
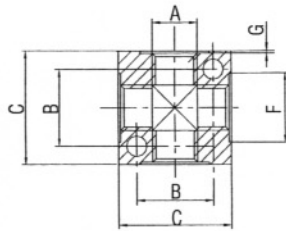
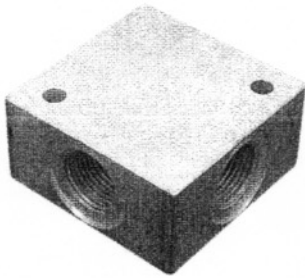
- Werkstoff: Aluminium
- Behandlung: Trommeln

**Caractéristiques Techniques:**

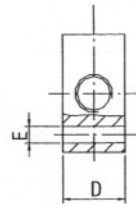
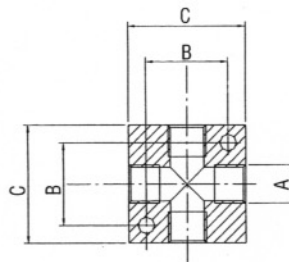
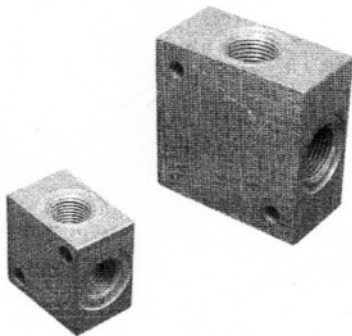
- Matériaux: Aluminium
- Traitement: Polissage au tonneau



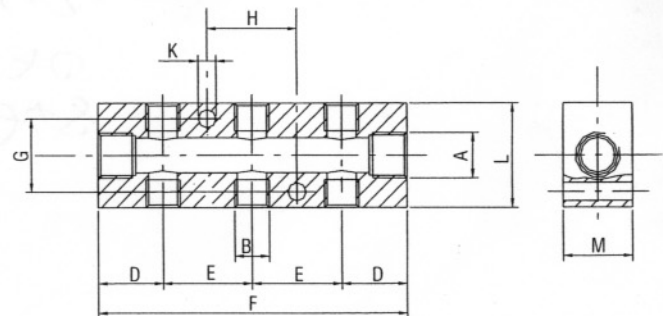
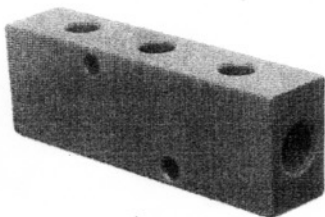
Codice Code	A	B	C	D	E	F	Kg
145.8	G 1/8	23	30	16	4,25	22	0,030
145.4	G 1/4	30	40	20	5,25	27	0,065
145.3	G 3/8	39	50	25	6,25	38	0,120
145.2	G 1/2	39	50	25	6,25	38	0,090



Codice Code	A	B	C	D	E	F	G	Kg
147.8	G 1/8	17	25	15	4,5	14	0,5	0,015
147.4	G 1/4	26	40	20	5,5	18	0,5	0,065
147.3	G 3/8	34	50	25	5,5	22	0,5	0,120
147.2	G 1/2	34	50	25	5,5	27	0,5	0,125



Codice Code	A	B	C	D	E	Kg
150.8	G 1/8	21	30	16	4,25	0,030
150.4	G 1/4	21	30	18	4,25	0,030
150.3	G 3/8	30	40	20	5,25	0,055
150.2	G 1/2	37	50	30	6,50	0,135



Ripartitori speciali dimensioni con uscite contraposte.  
Distribution frames with opposed outlets and special sizes

Codice Code	A	B	D	E	F	G	H	L	M	K	Kg
145.8.6	G 1/4	G 1/8	19	26	90	21	26	30	30	5,25	0,110

**A RICHIESTA**

**OPTION ON REQUEST**

**AUF WUNSCH**

**OPTION SUR DEMANDE**

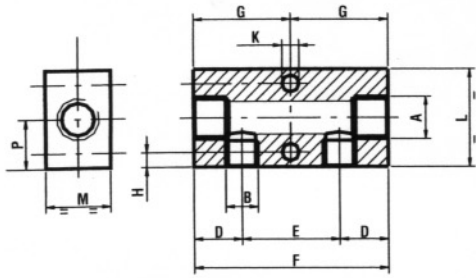
- 1xx.xxB Anodizzazione Bianca
- 1xx.xxO Anodizzazione Gialla
- 1xx.xxA Anodizzazione Azzurra
- 1xx.xxN Anodizzazione Nera

- White Anodized
- Yellow Anodized
- Blue Anodized
- Black Anodized

- Weisse Anodische
- Gelbe Anodische
- Blaue Anodische
- Schwarze Anodische

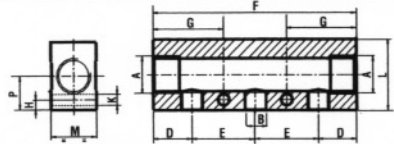
- Blanc Anodisé
- Jaune Anodisé
- Bleu Anodisé
- Noir Anodisé

2 entrate  
2 uscite  
2 inlets  
2 outlets



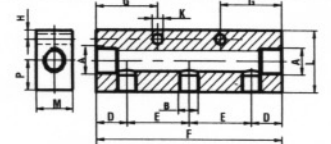
Codice Code	A	B	D	E	F	G	H	L	M	P	K	Kg
155.02	G 1/8	M5	15	15	45	22,5	3,5	20	15	10	4,25	0,032
151.02	G 1/4	G 1/8	15	30	60	30,0	4,5	30	20	15	5,25	0,080
152.02	G 3/8	G 1/4	18	36	72	36,0	6,0	40	20	20	6,50	0,110
153.02	G 3/8	G 1/8	18	30	66	33,0	4,5	40	20	20	5,25	0,137
154.02	G 1/2	G 1/4	22	36	80	40,0	6,0	40	28	20	6,50	0,200
156.02	G 1/2	G 3/8	25	40	90	45,0	6,0	40	28	20	6,50	0,180
157.02	G 1/2	G 1/2	30	40	100	50,0	6,0	40	28	20	6,50	0,195

2 entrate  
3 uscite  
2 inlets  
3 outlets



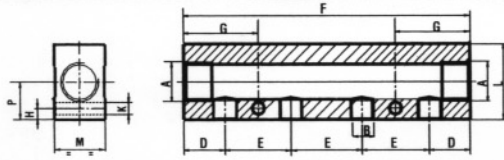
Codice Code	A	B	D	E	F	G	H	L	M	P	K	Kg
152.03	G 3/8	G 1/4	18	36	108	36,0	6,0	30	20	19	6,50	0,120
153.03	G 3/8	G 1/8	18	30	96	33,0	4,5	30	20	19	5,25	0,120
154.03	G 1/2	G 1/4	22	36	116	40,0	6,0	40	28	20	6,50	0,240
156.03	G 1/2	G 3/8	25	40	130	45,0	6,0	40	28	20	6,50	0,265
157.03	G 1/2	G 1/2	30	40	140	50,0	6,0	40	28	20	6,50	0,275

2 entrate  
3 uscite  
2 inlets  
3 outlets



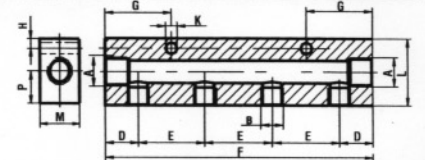
Codice Code	A	B	D	E	F	G	H	L	M	P	K	Kg
155.03	G 1/8	M5	15	15	60	22,5	3,5	20	15	10	4,25	0,043
151.03	G 1/4	G 1/8	15	30	90	30,0	4,5	30	20	15	5,25	0,115

2 entrate  
4 uscite  
2 inlets  
4 outlets



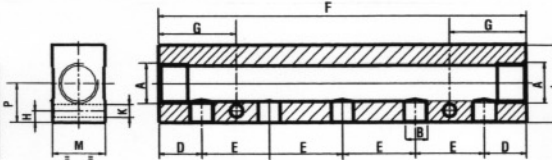
Codice Code	A	B	D	E	F	G	H	L	M	P	K	Kg
152.04	G 3/8	G 1/4	18	36	144	36,0	6,0	30	20	19	6,50	0,160
153.04	G 3/8	G 1/8	18	30	126	33,0	4,5	30	20	19	5,25	0,160
154.04	G 1/2	G 1/4	22	36	152	40,0	6,0	40	28	20	6,50	0,315
156.04	G 1/2	G 3/8	25	40	170	45,0	6,0	40	28	20	6,50	0,350
157.04	G 1/2	G 1/2	30	40	180	50,0	6,0	40	28	20	6,50	0,355

2 entrate  
4 uscite  
2 inlets  
4 outlets



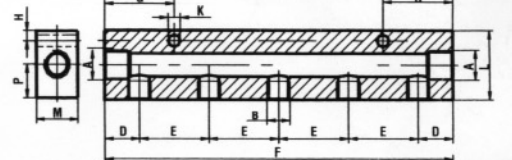
Codice Code	A	B	D	E	F	G	H	L	M	P	K	Kg
155.03	G 1/8	M5	15	15	75	22,5	3,5	20	15	10	4,25	0,053
151.03	G 1/4	G 1/8	15	30	120	30,0	4,5	30	20	15	5,25	0,158

2 entrate  
5 uscite  
2 inlets  
5 outlets



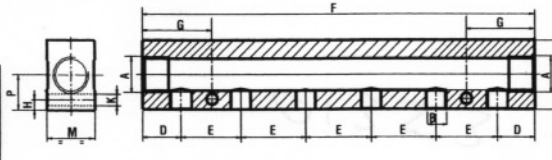
Codice Code	A	B	D	E	F	G	H	L	M	P	K	Kg
152.05	G 3/8	G 1/4	18	36	180	36,0	6,0	30	20	19	6,50	0,205
153.05	G 3/8	G 1/8	18	30	156	33,0	4,5	30	20	19	5,25	0,205
154.05	G 1/2	G 1/4	22	36	188	40,0	6,0	40	28	20	6,50	0,395
156.05	G 1/2	G 3/8	25	40	210	45,0	6,0	40	28	20	6,50	0,430
157.05	G 1/2	G 1/2	30	40	220	50,0	6,0	40	28	20	6,50	0,435

2 entrate  
5 uscite  
2 inlets  
5 outlets



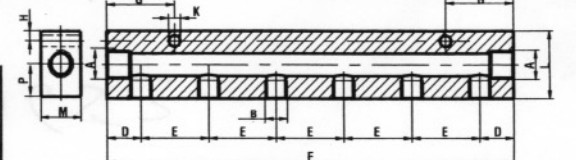
Codice Code	A	B	D	E	F	G	H	L	M	P	K	Kg
155.05	G 1/8	M5	15	15	90	22,5	3,5	20	15	10	4,25	0,064
151.05	G 1/4	G 1/8	15	30	150	30,0	4,5	30	20	15	5,25	0,200

2 entrate  
6 uscite  
2 inlets  
6 outlets



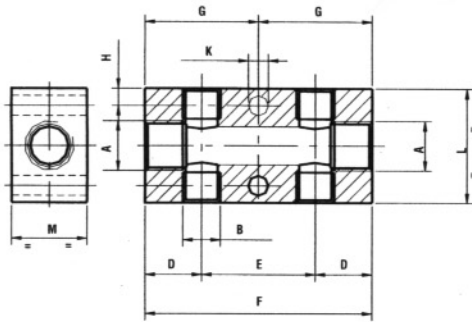
Codice Code	A	B	D	E	F	G	H	L	M	P	K	Kg
152.06	G 3/8	G 1/4	18	36	216	36,0	6,0	30	20	19	6,50	0,250
153.06	G 3/8	G 1/8	18	30	186	33,0	4,5	30	20	19	5,25	0,250
154.06	G 1/2	G 1/4	22	36	224	40,0	6,0	40	28	20	6,50	0,470
156.06	G 1/2	G 3/8	25	40	250	45,0	6,0	40	28	20	6,50	0,515
157.06	G 1/2	G 1/2	30	40	260	50,0	6,0	40	28	20	6,50	0,510

2 entrate  
6 uscite  
2 inlets  
6 outlets



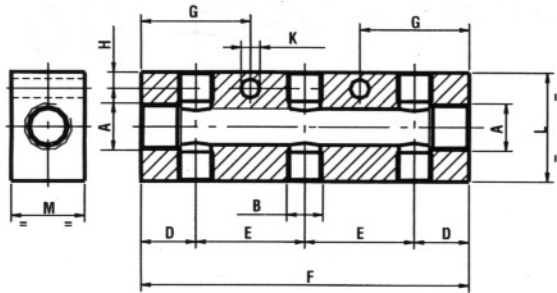
Codice Code	A	B	D	E	F	G	H	L	M	P	K	Kg
155.06	G 1/8	M5	15	15	105	22,5	3,5	20	15	10	4,25	0,074
151.06	G 1/4	G 1/8	15	30	180	30,0	4,5	30	20	15	5,25	0,240





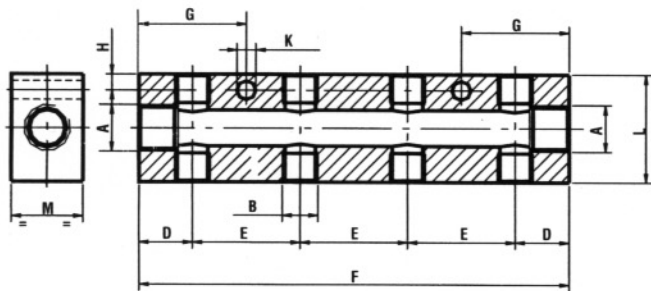
**2 entrate - 2+2 uscite • 2 inlets - 2+2 outlets**

Codice Code	A	B	D	E	F	G	H	L	M	K	Kg
155.22	G 1/8	M5	15	15	45	22,5	3,5	20	15	4,25	0,030
151.22	G 1/4	G 1/8	15	30	60	30,0	4,5	30	20	5,25	0,075
152.22	G 3/8	G 1/4	18	36	72	36,0	6,0	40	20	6,50	0,105
153.22	G 3/8	G 1/8	18	30	66	33,0	4,5	40	20	5,25	0,137
154.22	G 1/2	G 1/4	22	36	80	40,0	6,0	40	28	6,50	0,200
156.22	G 1/2	G 3/8	25	40	90	45,0	6,0	40	28	6,50	0,170
157.22	G 1/2	G 1/2	30	40	100	50,0	6,0	40	28	6,50	0,175



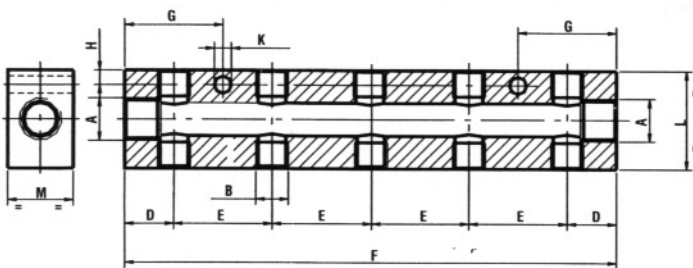
**2 entrate - 3+3 uscite • 2 inlets - 3+3 outlets**

Codice Code	A	B	D	E	F	G	H	L	M	K	Kg
155.33	G 1/8	M5	15	15	60	22,5	3,5	20	15	4,25	0,041
151.33	G 1/4	G 1/8	15	30	90	30,0	4,5	30	20	5,25	0,110
152.33	G 3/8	G 1/4	18	36	108	36,0	6,0	40	20	6,50	0,165
153.33	G 3/8	G 1/8	18	30	96	33,0	4,5	40	20	5,25	0,195
154.33	G 1/2	G 1/4	22	36	116	40,0	6,0	40	28	6,50	0,278
156.33	G 1/2	G 3/8	25	40	130	45,0	6,0	40	28	6,50	0,245
157.33	G 1/2	G 1/2	30	40	140	50,0	6,0	40	28	6,50	0,240



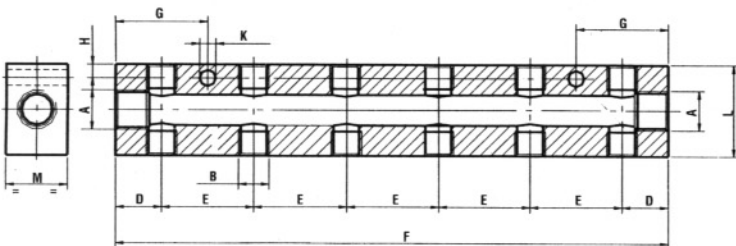
**2 entrate - 4+4 uscite • 2 inlets - 4+4 outlets**

Codice Code	A	B	D	E	F	G	H	L	M	K	Kg
155.44	G 1/8	M5	15	15	75	22,5	3,5	20	15	4,25	0,051
151.44	G 1/4	G 1/8	15	30	120	30,0	4,5	30	20	5,25	0,150
152.44	G 3/8	G 1/4	18	36	144	36,0	6,0	40	20	6,50	0,220
153.44	G 3/8	G 1/8	18	30	126	33,0	4,5	40	20	5,25	0,253
154.44	G 1/2	G 1/4	22	36	152	40,0	6,0	40	28	6,50	0,364
156.44	G 1/2	G 3/8	25	40	170	45,0	6,0	40	28	6,50	0,325
157.44	G 1/2	G 1/2	30	40	180	50,0	6,0	40	28	6,50	0,315



**2 entrate - 5+5 uscite • 2 inlets - 5+5 outlets**

Codice Code	A	B	D	E	F	G	H	L	M	K	Kg
155.55	G 1/8	M5	15	15	90	22,5	3,5	20	15	4,25	0,061
151.55	G 1/4	G 1/8	15	30	150	30,0	4,5	30	20	5,25	0,190
152.55	G 3/8	G 1/4	18	36	180	36,0	6,0	40	20	6,50	0,280
153.55	G 3/8	G 1/8	18	30	156	33,0	4,5	40	20	5,25	0,311
154.55	G 1/2	G 1/4	22	36	188	40,0	6,0	40	28	6,50	0,450
156.55	G 1/2	G 3/8	25	40	210	45,0	6,0	40	28	6,50	0,400
157.55	G 1/2	G 1/2	30	40	220	50,0	6,0	40	28	6,50	0,385



**2 entrate - 6+6 uscite • 2 inlets - 6+6 outlets**

Codice Code	A	B	D	E	F	G	H	L	M	K	Kg
155.66	G 1/8	M5	15	15	105	22,5	3,5	20	15	4,25	0,071
151.66	G 1/4	G 1/8	15	30	180	30,0	4,5	30	20	5,25	0,230
152.66	G 3/8	G 1/4	18	36	216	36,0	6,0	40	20	6,50	0,340
153.66	G 3/8	G 1/8	18	30	186	33,0	4,5	40	20	5,25	0,369
154.66	G 1/2	G 1/4	22	36	224	40,0	6,0	40	28	6,50	0,536
156.66	G 1/2	G 3/8	25	40	250	45,0	6,0	40	28	6,50	0,475
157.66	G 1/2	G 1/2	30	40	260	50,0	6,0	40	28	6,50	0,455