

High Pressure Hydraulic Adaptors



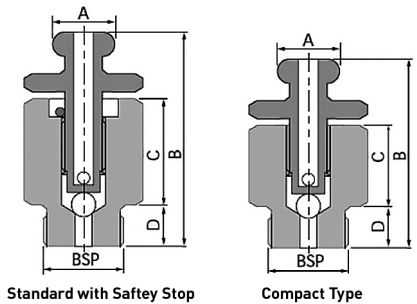
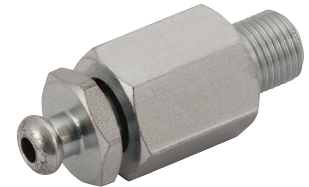
Bleed Valve

Features:

- High Working Pressure
- Mild Steel - High Grade Material
- Sealing face and threads machined to high tolerance
- High Level Corrosion Resistance Plating (CR3 compliant)
- Bonded Seal Centring Cone
- Available in Stainless Steel 316 or Cupro Nickel

Benefits:

- Highly resistant to leakage even under sever vibration, pressure pulsation and temperature



BSP	Part No	A mm	B mm	C mm	D mm	Nut A/F mm	Body A/F mm	*Max WP Bar
1/8	KRBV2	8	40	18	10	14	16	680
1/8	KRBV2C-5J	8	35	12	10	14	16	680

*Derate maximum working pressure by 50% for high pressure gas systems.