

# High Pressure Hydraulic Adaptors



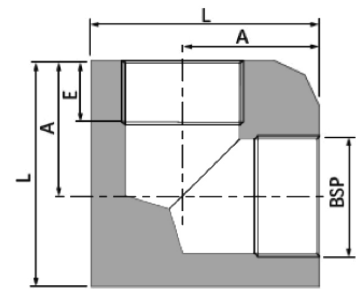
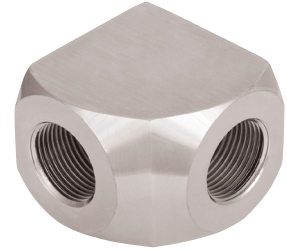
## Female Elbow

### Features:

- Solid piece elbow
- Compact full flow
- High working pressure
- Mild steel - high grade material
- Sealing face and threads machined to high tolerance
- High level corrosion resistance plating (CR3 compliant)
- Available in stainless steel 316 or cupro nickel

### Benefits:

- Reliable
- Highly resistant to leakage even under sever vibration, pressure pulsation and temperature
- No brazed parts



BSP	Part No	L 1mm	L2 mm	E mm	A mm	Body A/F mm	Max WP Bar
1/8	KREFT2*	35	17	10	27	19	680
1/4	KREFT4	41	21	11	33	25	680
3/8	KREFT6	48	24	13	37	25	680
1/2	KREFT8	57	29	16	44	32	680
3/4	KREFT12	70	35	18	56	41	680
1	KREFT16	83	41	21	67	51	500
1.1/4	KREFT20	89	44	21	73	64	500
1.1/2	KREFT24	105	52	25	83	64	500
2	KREFT32*	127	64	30	102	76	500