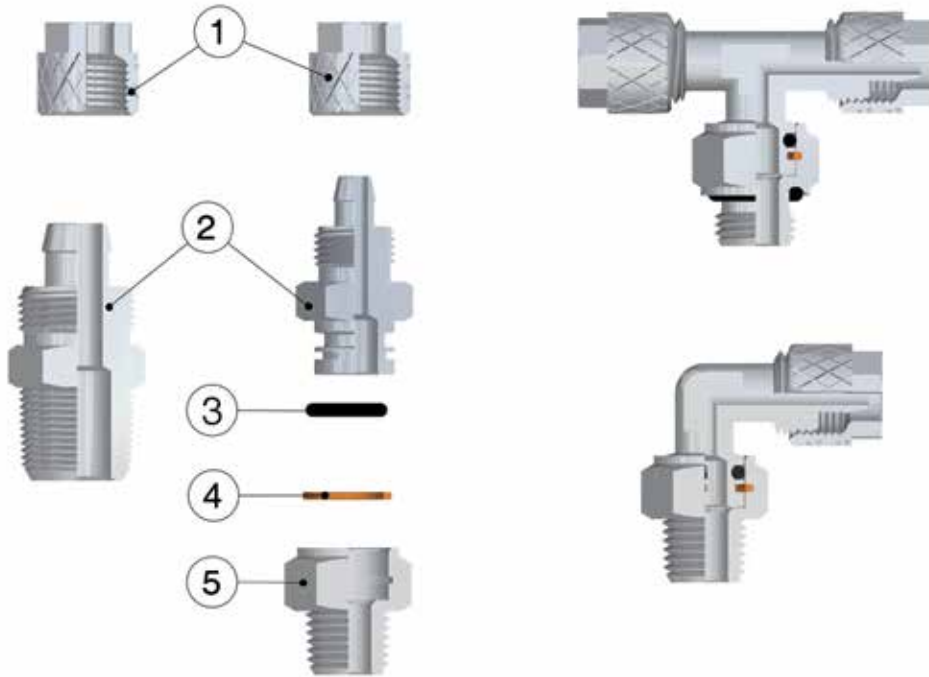


Brass Quick-Fit Fittings



Technical Characteristics



Component Parts & Materials

- 1 Nickel-plated Brass Nut
- 2 Nickel-plated Brass Body
- 3 NBR 70 O-RING Seals
- 4 Bronze Seeger
- 5 Nickel-plated Brass Base

UNDER NO CIRCUMSTANCES, THE "SWIVEL" FITTINGS CAN BE USED AS REVOLVING JOINTS.

Pressures & Temperatures

The working pressures and working temperatures depend on which type of tube is used, for this reason, the values must be determined in accordance with the tube's features.

For the "swivel and thread with O-RING" fittings, the values are:

Pressures

Minimum pressure: -0.99 bar (-0.099 MPa)

Maximum pressure: 15 bar (1.5 MPa)

Temperatures

Minimum temperature: -20 °C

Maximum temperature: +80 °C

Threads

Tapered gas in conformity with ISO7.1, BS 21, DIN 2999.

Parallel gas in conformity with ISO 228 Class A.

Metric in conformity with ISO R/262.

Fluids

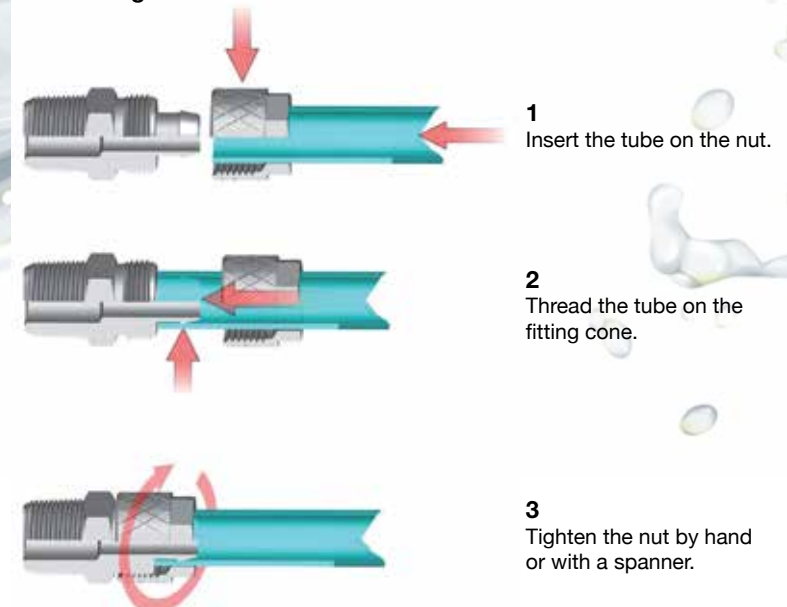
Compressed air. Fluids and liquids at low pressure compatible with the connection.

Connection Tubes

Plastic tubes:

PA6, PA11, PA12, Polyethylene, Polyurethane, PEF, PTFE.

Assembling



1 Insert the tube on the nut.

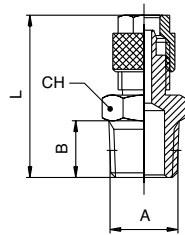
2 Thread the tube on the fitting cone.

3 Tighten the nut by hand or with a spanner.

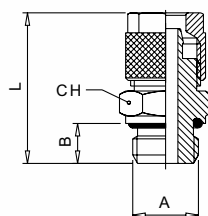
Brass Quick-Fit Fittings



Male Studs

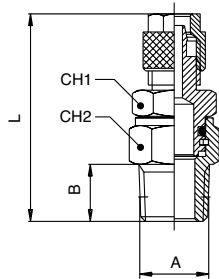


Code	Tube	A	B	L	CH
C1-4/2.7-1/8	4/2.7	1/8"	7.5	23.5	12
C1-5/3-1/8	5/3	1/8"	7.5	23	12
C1-6/4-1/8	6/4	1/8"	7.5	25.6	12
C1-6/4-1/4	6/4	1/4"	11	29.6	14
C1-6/4-3/8	6/4	3/8"	11.5	30	17
C1-8/6-1/8	8/6	1/8"	7.5	26.9	14
C1-8/6-1/4	8/6	1/4"	11	30.9	14
C1-8/6-3/8	8/6	3/8"	11.5	31.4	17
C1-8/6-1/2	8/6	1/2"	14	34	22
C1-10/8-1/8	10/8	1/8"	7.5	29	14
C1-10/8-1/4	10/8	1/4"	11	33	14
C1-10/8-3/8	10/8	3/8"	11.5	33.5	17
C1-10/8-1/2	10/8	1/2"	14	36.5	22
C1-12/10-3/8	12/10	3/8"	11.5	35	17
C1-12/10-1/2	12/10	1/2"	14	38	22
C1-15/12.5-1/2	15/12.5	1/2"	14	40	22

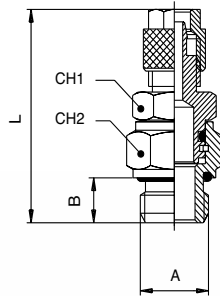


Code	Tube	A	B	L	CH
C1Z-4/2.7-5M	4/2.7	M5	4	20.5	8
C1Z-4/2.7-6M	4/2.7	M6	5	21.5	8
C1Z-4/2.7-1/8	4/2.7	1/8"	6	23	13
C1Z-5/3-5M	5/3	M5	4	23.1	8
C1Z-5/3-6M	5/3	M6	5	23.1	8
C1Z-5/3-1/8	5/3	1/8"	6	25.1	13
C1Z-6/4-5M	6/4	M5	4	23.1	8
C1Z-6/4-6M	6/4	M6	5	23.1	8
C1Z-6/4-1/8	6/4	1/8"	6	25.1	13
C1Z-6/4-1/4	6/4	1/4"	8	28.1	16
C1Z-6/4-3/8	6/4	3/8"	9	29.1	19
C1Z-6/4-1/2	6/4	1/2"	10	32	24
C1Z-8/6-1/8	8/6	1/8"	6	26.4	14
C1Z-8/6-1/4	8/6	1/4"	8	29.4	16
C1Z-8/6-3/8	8/6	3/8"	9	30.4	19
C1Z-10/8-1/8	10/8	1/8"	6	28.5	14
C1Z-10/8-1/4	10/8	1/4"	8	31.5	16
C1Z-10/8-3/8	10/8	3/8"	9	32.5	19
C1Z-10/8-1/2	10/8	1/2"	10	34.5	24
C1Z-12/10-3/8	12/10	3/8"	9	34	19
C1Z-12/10-1/2	12/10	1/2"	10	36	24

Swivel Male Studs

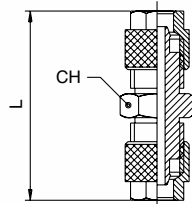


Code	Tube	A	B	L	CH1	CH2
C1X-6/4-1/4	6/4	1/4"	11	40	14	15
C1X-8/6-1/8	8/6	1/8"	7.5	33.5	12	13
C1X-8/6-1/4	8/6	1/4"	11	40	14	15
C1X-10/8-1/4	10/8	1/4"	11	41	14	15
C1X-12/8-3/8	12/8	3/8"	11.5	43.5	17	17
C1X-12/10-3/8	12/10	3/8"	11.5	43.5	17	17



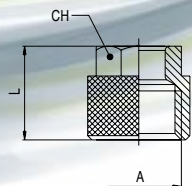
Code	Tube	A	B	L	CH1	CH2
C1Y-6/4-1/8	6/4	1/8"	6	34	12	13
C1Y-6/4-1/4	6/4	1/4"	8	38	14	16
C1Y-8/6-1/8	8/6	1/8"	6	34	12	13
C1Y-8/6-1/4	8/6	1/4"	8	38	14	16
C1Y-10/8-1/4	10/8	1/4"	8	39	14	16

Straight Connector - Equal & Unequal



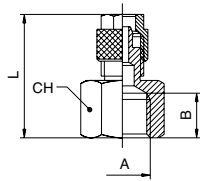
Code	Tube	Tube	L	CH
C3-4/2.7	4/2.7	4/2.7	27.5	8
C3-5/3	5/3	5/3	31.7	8
C3-6/4-5/3	6/4	5/3	32.2	12
C3-6/4	6/4	6/4	32.2	12
C3-8/6-6/4	8/6	6/4	33.5	12
C3-8/6	8/6	8/6	34.8	12
C3-10/8-8/6	10/8	8/6	36.9	14
C3-10/8	10/8	10/8	39	14
C3-12/10	12/10	12/10	43	17
C3-15/12.5	15/12.5	15/12.5	47	22

Locking Nut



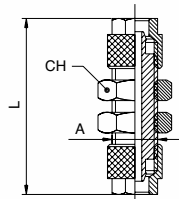
Code	Tube	A	L	CH
C10-4/2.7-M6	4/2.7	M6 x 0.5	9	7
C10-5/3-M7	5/3	M7 x 0.75	11	8
C10-6/4-M8	6/4	M8 x 0.75	11	8
C10-6/4-M10	6/4	M10 x 1	11	10
C10-8/6-M12	8/6	M12 x 1	11.5	12
C10-10/8-M14	10/8	M14 x 1	13.5	14
C10-15/12.5-M20	15/12.5	M20 x 1	16	19

Female Stud



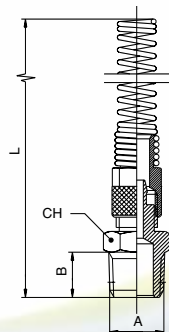
Code	Tube	A	B	L	CH
C2-6/4-1/8	6/4	1/8"	8.5	23.3	14
C2-6/4-1/4	6/4	1/4"	11	27	17
C2-6/4-3/8	6/4	3/8"	11.5	28	22
C2-8/6-1/8	8/6	1/8"	8	24.7	14
C2-8/6-1/4	8/6	1/4"	11	28.7	17
C2-8/6-3/8	8/6	3/8"	11.5	29.2	22
C2-8/6-1/2	8/6	1/2"	15.5	33	24
C2-10/8-1/4	10/8	1/4"	11	30.5	17
C2-10/8-3/8	10/8	3/8"	11.5	31	22
C2-10/8-1/2	10/8	1/2"	15.5	34.5	24
C2-12/10-3/8	12/10	3/8"	11.5	32.5	22

Bulkhead Connector

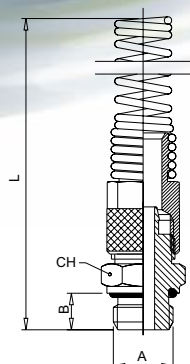


Code	Tube	A	L	CH
C4-4/2.7	4/2.7	M6 x 0.5	35	10
C4-5/3	5/3	M7 x 0.75	35	10
C4-6/4-5/3	6/4-5/3	M10 x 1	45.5	14
C4-6/4	6/4	M10 x 1	45.5	14
C4-8/6-6/4	8/6-6/4	M12 x 1	47.3	17
C4-8/6	8/6	M12 x 1	48.4	17
C4-10/8	10/8	M14 x 1	52	17
C4-12/10	12/10	M16 x 1	57	19

Male Studs, Spring Guard

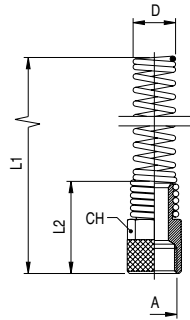


Code	Tube	A	B	L	CH
E1-6/4-1/8	6/4	1/8"	7.5	108	12
E1-6/4-1/4	6/4	1/4"	11	112.5	14
E1-8/6-1/4	8/6	1/4"	11	118	14
E1-8/6-3/8	8/6	3/8"	11.5	119	17
E1-8/6-1/2	8/6	1/2"	14	121	22
E1-10/8-1/8	10/8	1/8"	7.5	122	14
E1-10/8-1/4	10/8	1/4"	11	126	14
E1-10/8-3/8	10/8	3/8"	11.5	127	17
E1-10/8-1/2	10/8	1/2"	14	130	22



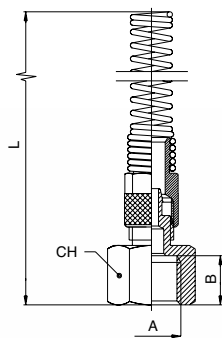
Code	Tube	A	B	L	CH
E1Z-6/4-1/8	6/4	1/8"	6	109	13
E1Z-6/4-1/4	6/4	1/4"	8	111	16
E1Z-6/4-1/2	6/4	1/2"	10	114	24
E1Z-8/6-1/4	8/6	1/4"	8	116.5	16
E1Z-8/6-1/2	8/6	1/2"	10	119.5	24
E1Z-10/8-3/8	10/8	3/8"	9	125.5	19
E1Z-12/10-3/8	12/10	3/8"	9	133	19

Locking Nut & Spring



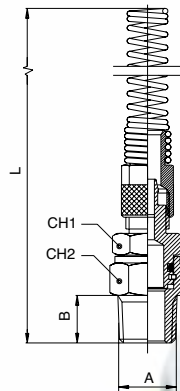
Code	Tube	A	D	L1	L2	CH
C10X-6/4	6/4	M10 x 1	9.4	93	20	11
C10X-8/6	8/6	M12 x 1	11.4	98.5	21	13
C10X-10/8	10/8	M14 x 1	13.4	107	24	14
C10X-12/10	12/10	M16 x 1	16	116.5	27.5	17

Straight Female Adaptors

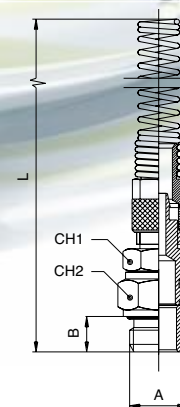


Code	Tube	A	B	L	CH
C2X-6/4-1/4	6/4	1/4"	11	109	17
C2X-6/4-3/8	6/4	3/8"	11.5	110	22
C2X-8/6-1/4	8/6	1/4"	11	115.5	17
C2X-8/6-3/8	8/6	3/8"	11.5	116	22
C2X-10/8-1/2	10/8	1/2"	15.5	128.5	24

Swivel Male Studs, Spring Guard

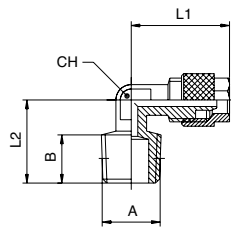


Code	Tube	A	B	L	CH1	CH2
E1X-6/4-1/8	6/4	1/8"	7.5	117.5	12	13
E1X-6/4-1/4	6/4	1/4"	11	121	14	15
E1X-8/6-1/4	8/6	1/4"	11	128	14	15
E1X-10/6.5-1/4	10/6.5	1/4"	11	135	14	15
E1X-10/8-1/4	10/8	1/4"	11	136	14	15
E1X-12/8-3/8	12/8	3/8"	11.5	144	17	17



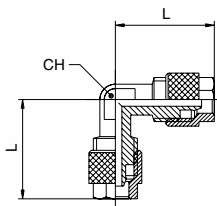
Code	Tube	A	B	L	CH1	CH2
E1X-6/4-1/8	6/4	1/8"	7.5	117.5	12	13
E1X-6/4-1/4	6/4	1/4"	11	121	14	15
E1X-8/6-1/4	8/6	1/4"	11	128	14	15
E1X-10/6.5-1/4	10/6.5	1/4"	11	135	14	15
E1X-10/8-1/4	10/8	1/4"	11	136	14	15
E1X-12/8-3/8	12/8	3/8"	11.5	144	17	17

Male Studs Elbow



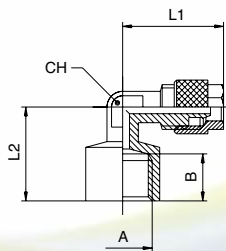
Code	Tube	A	B	L1	L2	CH
C5-4/2.7-1/8	4/2.7	1/8"	7.5	19.5	15	8
C5-5/3-1/8	5/3	1/8"	7.5	19.5	15	8
C5-6/4-1/8	6/4	1/8"	7.5	19.5	15	8
C5-6/4-1/4	6/4	1/4"	11	20.6	19	8
C5-6/4-3/8	6/4	3/8"	11.5	21	21	9
C5-8/6-1/8	8/6	1/8"	7.5	19.9	16.5	9
C5-8/6-1/4	8/6	1/4"	11	21.9	19	9
C5-8/6-3/8	8/6	3/8"	11.5	23.4	21	9
C5-8/6-1/2	8/6	1/2"	14	26	28	16
C5-10/8-1/8	10/8	1/8"	7.5	25	18	11
C5-10/8-1/4	10/8	1/4"	11	24	22	11
C5-10/8-3/8	10/8	3/8"	12.5	25.5	22.5	11
C5-10/8-1/2	10/8	1/2"	14	28	28	16
C5-12/10-3/8	12/10	3/8"	11.5	27	22.5	13
C5-12/10-1/2	12/10	1/2"	14	30	28	16
C5-15/12.5-1/2	15/12.5	1/2"	14	31.5	28	16

Equal Elbow



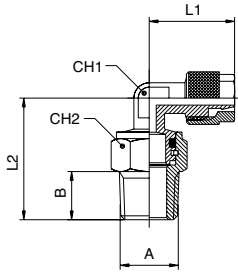
Code	Tube	L	CH
C6-6/4	6/4	20.6	8
C6-8/6	8/6	21.9	9
C6-10/8	10/8	25.5	11
C6-12/10	12/10	27	13

Female Stud Elbow

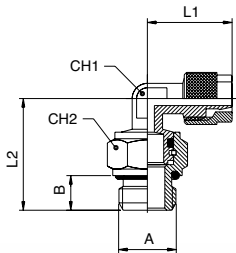


Code	Tube	A	B	L1	L2	CH
C5F-5/3-1/8	5/3	1/8"	8.5	20.6	18	8
C5F-6/4-1/8	6/4	1/8"	8.5	20.6	18	8
C5F-6/4-1/4	6/4	1/4"	10.5	21	21	9
C5F-8/6-1/8	8/6	1/8"	8.5	21.9	19	9
C5F-8/6-1/4	8/6	1/4"	10.5	23.4	21	9
C5F-10/8-1/4	10/8	1/4"	10.5	25.5	22.5	11
C5F-10/8-3/8	10/8	3/8"	11.5	28	27	16

Swivel Male Stud Elbows

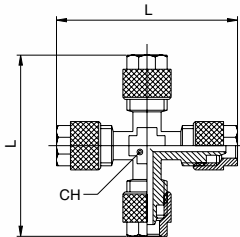


Code	Tube	A	B	L1	L2	CH	CH2
C5X-6/4-1/8	6/4	1/8"	7.5	20.6	22.5	8	13
C5X-6/4-1/4	6/4	1/4"	11	20.6	28	8	15
C5X-8/6-1/8	8/6	1/8"	7.5	21.6	22.5	9	13
C5X-8/6-1/4	8/6	1/4"	11	23.1	28.5	9	15
C5X-10/8-1/4	10/8	1/4"	11	24	30.5	11	15



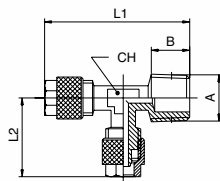
Code	Tube	A	B	L1	L2	CH	CH2
C5Y-6/4-1/8	6/4	1/8"	6	20.6	22	8	13
C5Y-6/4-1/4	6/4	1/4"	8	20.6	26	8	16
C5Y-8/6-1/8	8/6	1/8"	6	21.6	21.6	9	13
C5Y-8/6-1/4	8/6	1/4"	8	23.1	26.5	9	16
C5Y-10/8-1/4	10/8	1/4"	8	24	27.5	11	16

Equal Cross

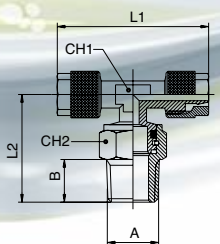


Code	Tube	L	CH
C11-6/4	6/4	41.6	8
C11-8/6	8/6	44.4	9
C11-12/10	12/10	58	13
C11-15/12.5	15/12.5	64	17

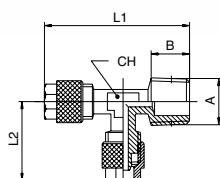
Male Branch Tee - Off-set Leg



Code	Tube	A	B	L1	L2	CH
C8-6/4-1/8	6/4	1/8"	7.5	36.7	20.6	8
C8-6/4-1/4	6/4	1/4"	11	40.2	20.6	8
C8-8/6-1/8	8/6	1/8"	7.5	38	21.9	9
C8-8/6-1/4	8/6	1/4"	11	41.5	21.9	9
C8-10/8-1/4	10/8	1/4"	11	43	25.5	11
C5F-10/8-1/4	10/8	1/4"	10.5	25.5	22.5	11
C5F-10/8-3/8	10/8	3/8"	11.5	28	27	16

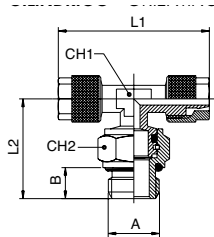


Code	Tube	A	B	L1	L2	CH1	CH2
C7X-6/4-1/8	6/4	1/8"	7.5	41.2	22.5	8	13
C7X-6/4-1/4	6/4	1/4"	11	41.2	28	8	15
C7X-8/6-1/8	8/6	1/8"	7.5	43.2	29.5	9	15
C7X-8/6-1/4	8/6	1/4"	11	43.2	29.5	9	15



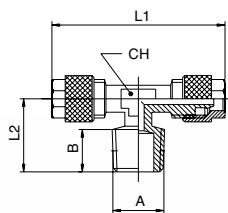
Code	Tube	A	B	L1	L2	CH1	CH2
C7Y-6/4-1/8	6/4	1/8"	6	41.2	22	8	13
C7Y-8/6-1/8	8/6	1/8"	6	43.2	24	9	13
C7Y-8/6-1/4	8/6	1/4"	8	43.2	27.5	9	16

Equal Tee



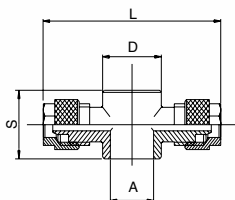
Code	Tube	L1	L2	CH
C9-4/2.7	4/2.7	40	20.5	8
C9-5/3	5/3	41.2	20.6	8
C9-6/4	6/4	41.2	20.6	8
C9-8/6	8/6	43.8	21.9	9
C9-10/8	10/8	51	25.5	11
C9-12/10	12/10	54	28	13
C9-15/12.5	15/12.5	63	32.5	16

Male Stud Tee - Centre Leg



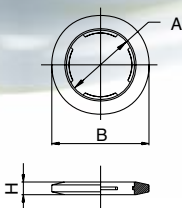
Code	Tube	A	B	L1	L2	CH
C7-4/2.7-1/8	4/2.7	1/8"	7.5	37	15.5	8
C7-6/4-1/8	6/4	1/8"	7.5	39	15.5	8
C7-6/4-1/4	6/4	1/4"	11	41.2	19	8
C7-8/6-1/8	8/6	1/8"	7.5	39.8	16.5	9
C7-8/6-1/4	8/6	1/4"	11	43.8	20.5	9
C7-10/8-1/4	10/8	1/4"	11	48	22	11
C7-12/10-3/8	12/10	3/8"	11.5	54	22.5	14
C7-15/12.5-1/2	15/12.5	1/2"	14	63	28	16

Double Banjo Body - Quick-Fit



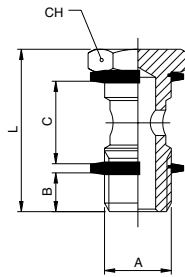
Code	Tube	A	D	S	L
D6-4/2.7-1/8	4/2.7	1/8"	14	15	43
D6-5/3-5M	5/3	M5	9	12.5	43
D6-8/6-1/8	8/6	1/8"	14	15	49.4
D6-8/6-1/4	8/6	1/4"	18	17	55.2
D6-8/6-3/8	8/6	3/8"	21	20	55
D6-8/6-1/2	8/6	1/2"	26	24	61
D6-10/8-1/8	10/8	1/8"	14	15	53
D6-10/8-1/2	10/8	1/2"	26	24	66
D6-15/12.5-1/2	15/12.5	1/2"	26	24	73

Nylon Notched Washer

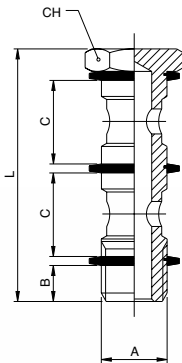


Code	Size	A	B	H
D11X-5M	M5	5.2	8	1
D11X-6M	M6	6.1	9	1.3
D11X-1/8	1/8"	10	14	1.5
D11X-1/4	1/4"	13.5	18	1.5
D11X-3/8	3/8"	16.8	21	1.5
D11X-1/2	1/2"	21.1	26	2
D11X-3/4	3/4"	27	32	2.5

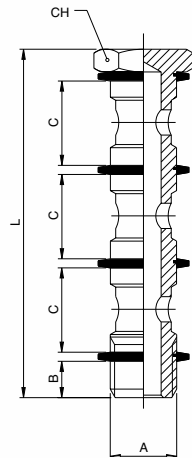
Short Banjo Bolt



Code	A	B	C	L	CH
D7-5M-L	M5	4	12.5	22	8
D7-6M	M6	5	12.5	23	8
D7-1/8	1/8"	6	15	28	14
D7-1/4	1/4"	8	17	32	17
D7-3/8	3/8"	9	20	36	19
D7-1/2	1/2"	10	24	42	24
D7-M12X1.5	M12 x 1.5	8	17	32	17

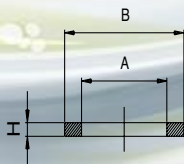


Code	A	B	C	L	CH
D8-1/8	1/8"	6	15	44.5	14
D8-1/4	1/4"	8	17	50.5	17
D8-3/8	3/8"	9	20	58	19
D8-1/2	1/2"	10	24	68	24



Code	A	B	C	L	CH
D13-1/4	1/4"	8	17	69	17
D13-1/2	1/2"	10	24	94	24

Aluminium Washer



Code	Size	A	B	H
D11-5M	M5	5.2	8	1
D11-1/8	1/8"	10	14	1.5
D11-1/4	1/4"	13.5	18	1.5
D11-3/8	3/8"	16.8	21	1.5
D11-1/2	1/2"	21.1	26	1.5
D11-3/4	3/4"	27.1	32.8	1.5
D11-1	1"	33.3	39.8	1.5
D11-1 1/2	1 1/2"	48.5	54.8	1.5
D11-2	2"	59.5	72	1.5