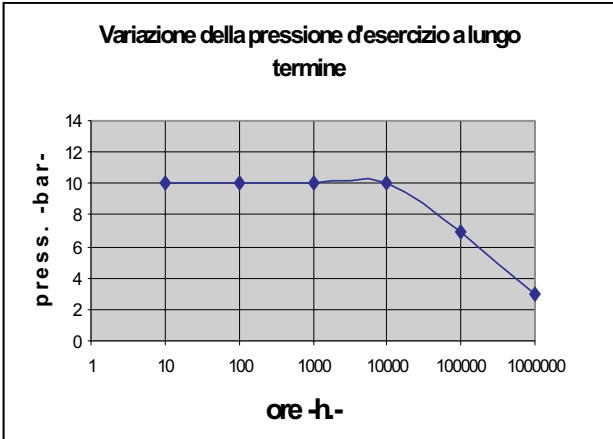
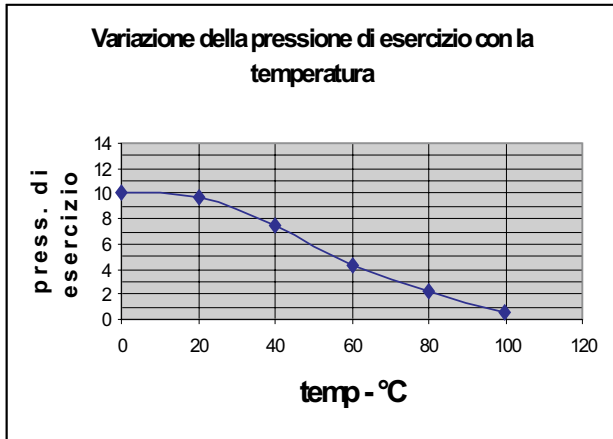
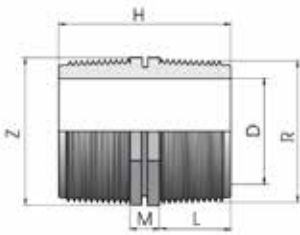


Threaded Fitting Pn10



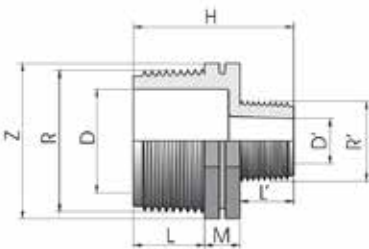


Nipple



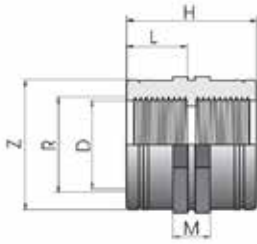
R	Ref	H	L	D	Z	M
1/2" x 1/2"	PEN12-12	41	15	12	21	12
3/4" x 3/4"	PEN34-34	43	16	17	26	12
1" x 1"	PEN1-1	51	20	23	35	12
1 1/4" x 1 1/4"	PEN114-114	55	22	29	45	12
1 1/2" x 1 1/2"	PEN112-112	55	22	35	51	12
2" x 2"	PEN2-2	61	25	43	61	12
3" x 3"	PEN3-3	83	33	71	93	17

619 **Nipplo ridotto**
Reducing Nipple
Machón reducido



R	Ref	H	L	L'	D	D'	Z	M
3/4" x 1/2"	PRN34-12	42	16	15	17	12	23	11
1" x 3/4"	PRN1-34	46	19	16	23	17	35	11
1 1/4" x 1"	PRN114-1	51	21	19	29	23	45	11
1 1/2" x 1 1/4"	PRN112-114	51	23	21	34	29	51	11
2" x 1 1/2"	PRN2-112	57	25	21	44	34	62	11
2 1/2" x 2"	PRN212-2	75	31	27	59	44	79	17

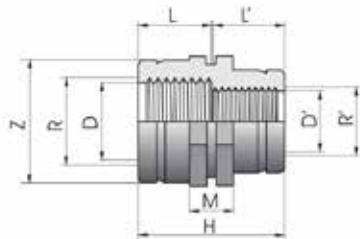
Socket



R	Ref	H	L	D	Z	M
1/2" x 1/2"	PES12-12	40	19	19	32	12
3/4" x 3/4"	PES34-34	42	20	24	37	12
1" x 1"	PES1-1	50	24	29	44	12
1 1/4" x 1 1/4"	PES114-114	52	25	39	58	12
1 1/2" x 1 1/2"	PES112-112	52	25	44	63	12
2" x 2"	PES2-2	62	30	56	74	12
* 2 1/2" x 2 1/2"	PES212-212	76	35	72	94	17
* 3" x 3"	PES3-3	80	35	85	110	17

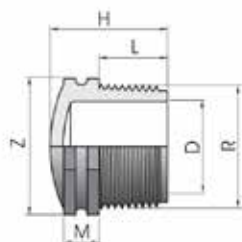
* Con anello di rinforzo

621 **Manicotto ridotto** **Reducing socket** **Manguito reducido**



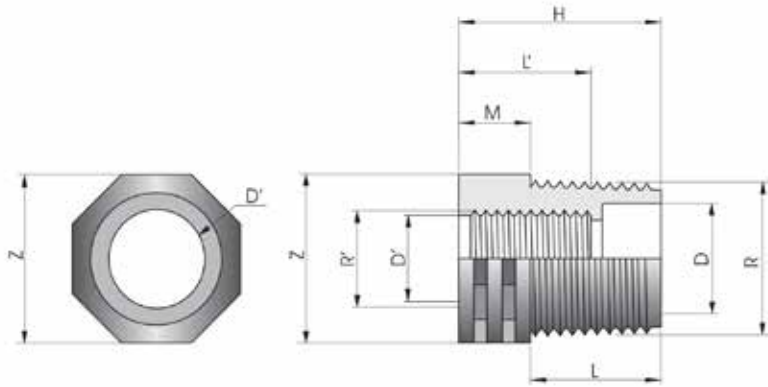
R	Ref	H	L	L'	D	D'	Z	M
3/4" x 1/2"	PRS34-12	40	20	19	23	18	39	12
1" x 3/4"	PRS1-34	45	24	20	30	24	44	12
1 1/4" x 1"	PRS114-1	50	26	22	38	30	58	12
1 1/2" x 1 1/4"	PRS112-114	52	25	22	44	38	61	12
2" x 1 1/2"	PRS2-112	56	30	24	56	44	75	12

610 **Tappo** **Threaded Plug** **Tapón M**



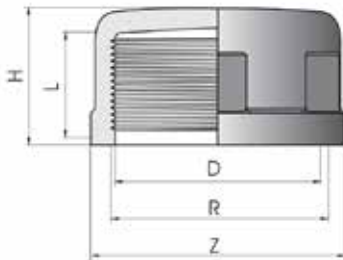
R	Ref	H	L	D	Z	M
1/2"	PTP12	28	15	12	22	12
3/4"	PTP34	30	16	17	26	12
1"	PTP1	34	19	22	36	12
1 1/4"	PTP114	37	21	30	46	12
1 1/2"	PTP112	37	21	34	52	12
2"	PTP2	40	25	44	62	12
2 1/2"	PTP212	47	30	58	80	16
3"	PTP3	56	33	71	96	16

Male/Female Reducer



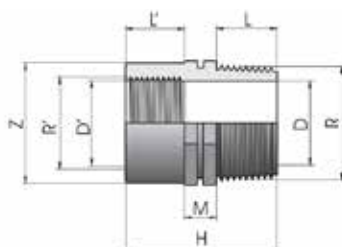
R	Ref	H	L	L'	D	D'	Z	M
3/4" x 1/2"	PRB34-12	26	16	16	17	18	26	12
1" x 1/2"	PRB1-12	33	21	21	24	18	36	12
1" x 3/4"	PRB1-34	33	19	19	23	23	36	12
1 1/4" x 1/2"	PRB114-12	33	21	21	23	18	36	12
1 1/4" x 3/4"	PRB114-34	33	21	21	23	24	45	12
1 1/4" x 1"	PRB114-1	33	21	21	29	30	45	12
1 1/2" x 3/4"	PRB112-34	33	21	20	23	24	51	12
1 1/2" x 1"	PRB112-1	33	21	21	29	30	51	12
1 1/2" x 1 1/4"	PRB112-114	33	21	26	34	38	52	12
2" x 3/4"	PRB2-34	37	25	20	44	24	62	12
2" x 1"	PRB2-1	37	25	23	44	30	62	12
2" x 1 1/4"	PRB2-114	37	25	25	44	39	62	12
2" x 1 1/2"	PRB2-112	37	25	25	44	44	62	12
2 1/2" x 2"	PRB212-2	45	30	25	44	50	62	12
3" x 2"	PRB3-2	50	33	25	71	50	94	17
3" x 2 1/2"	PRB3-212	50	33	30	71	56	94	17

Threaded Cap



R	Ref	H	L	D	Z
1/2"	PTC12	18	15	19	29
3/4"	PTC34	23	19	24	33
1"	PTC1	23	19	30	44
1 1/4"	PTC114	23	21	38	50
1 1/2"	PTC112	33	25	45	60
2"	PTC2	38	27	56	71

Male Tee



R	Ref	H	L	L'	D	D'	Z	M
1/2" x 3/4"	PRE34-12	35	16	17	12	15	25	12
1" x 1/2"	PRE1-12	47	18	17	23	18	36	12
1" x 3/4"	PRE1-34	50	20	18	23	25	36	12
1 1/4" x 1"	PRE114-1	57	23	22	30	33	45	12
1 1/2" x 1 1/4"	PRE112-114	57	23	25	35	39	55	12