

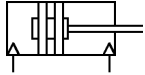
Actuators

# Roundline cylinders

RT/57200

Double acting

Ø 8 to 63 mm



One fifth shorter than the basic length of a corresponding ISO cylinder

Low friction, long life seals

High strength, double crimped end cap design

Standard magnetic piston for full control system versatility

Non-lube operation

Choice of porting option for compact installation

## Technical data

Medium:

Compressed air, filtered, lubricated or non-lubricated

Operation:

Double acting, buffer cushioning  
RT/57200/M

Side port, integral eye mounting (Ø 8 to 40 mm), fixing holes in the end cover (Ø 50 and 63 mm)  
RT/57200/MC

Central rear port (Ø 8 to 40 mm)  
RT/57200/MF

Flat rear cover (Ø 8 to 40 mm)

Operating pressure:  
1 to 10 bar

Operating temperature:  
-10°C to +80°C

Consult our Technical Service for use below +2°C

Strokes:

Standard, see table

Non-standard 500 mm max.

## Materials

Piston rod: stainless steel (8 to 16 mm bore Austenitic, 20 to 63 mm bore Martensitic)

Barrel: stainless steel (Austenitic)

End covers: aluminium

Wiper: polyurethane

Seals & 'O'-rings: nitrile rubber

## Standard models

Ø	Piston rod Ø	Port size	Side port, integral eye mounting	Central rear port Flat end	Side port Flat end
8	3	M 3	RT/57208/M/*	RT/57208/MC/*	RT/57208/MF/*
10	4	M 5	RT/57210/M/*	RT/57210/MC/*	RT/57210/MF/*
12	4	M 5	RT/57212/M/*	RT/57212/MC/*	RT/57212/MF/*
16	6	M 5	<b>RT/57216/M/*</b>	RT/57216/MC/*	RT/57216/MF/*
20	8	Rc 1/8	<b>RT/57220/M/*</b>	RT/57220/MC/*	RT/57220/MF/*
25	10	Rc 1/8	<b>RT/57225/M/*</b>	RT/57225/MC/*	RT/57225/MF/*
32	12	Rc 1/8	<b>RT/57232/M/*</b>	RT/57232/MC/*	RT/57232/MF/*
40	14	Rc 1/8	<b>RT/57240/M/*</b>	RT/57240/MC/*	RT/57240/MF/*
50	16	Rc 1/4**	<b>RT/57250/M/*</b>	–	–
63	20	Rc 1/4**	<b>RT/57263/M/*</b>	–	–

\* Insert stroke length in mm. Cylinder sizing and speed control see page 6. Service kits are not available for these cylinders.

\*\* These models do not have rear eye.

## Standard strokes

Ø	10	25	40	50	80	100	125	160	200	250	320
8	○	○	○	○	○	○					
10	○	○	○	○	○	○					
12	○	○	○	○	○	○	○	○	○		
16	○	○	○	●	●	○	○	○	○		
20	○	●	○	●	●	●	○	○	○	○	○
25	○	●	○	●	●	●	○	○	○	○	○
32	○	○	○	○	○	○	○	○	○	○	○
40	○	○	○	○	○	○	○	○	○	○	○
50	○	○	○	○	○	○	○	○	○	○	○
63	○	○	○	○	○	○	○	○	○	○	○

● Indicates stocked stroke lengths of standard models highlighted in table above.

## Options selector

RT/572\*\*\*/\*\*/\*\*\*\*

Cylinder diameters (mm)

08, 10, 12, 16, 20, 25, 32, 40, 50, 63

Strokes (mm)

500 max

Variants

Variant	Substitute
Standard	M
Central rear port	MC
Side port, flat end	MF
Double ended piston rod	JM

Note: Disregard option positions not used.

For combinations of cylinder variants consult our Technical Service.

## Switches

With integral cable



With plug-in cable



	Model	Plug-in cable	
Reed	M/50/LSU*V	M/50/LSU/CP	M/P73001/5 (5 m)
Solid state	M/50/EAP*V	M/50/EAP/CP	M/P73001/5 (5 m)

\*Insert cable length – 2, 5 or 10 m. For details see page 198

# Roundline cylinders

RT/57200

Double acting

Ø 8 to 63 mm

## Mountings

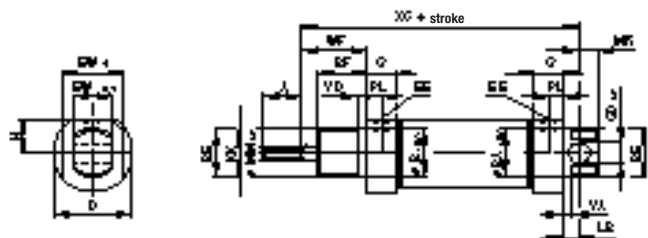
Ø	AK	C	F	H	L	M	N	UF	Piston rod lock nut	Switch mounting brackets
8	–	M/P71273/1	QM/57008/25	–	QM/57008/24	QM/57008/26	M/P71364	–	M/P1500/111	–
10	QM/8010/38	M/P71273/2	QM/8010/25	–	QM/947	QM/57010/26	M/P71364	QM/8010/32	M/P1501/80	QM/33/010/22#
12	QM/8010/38	M/P71273/2	QM/8010/25	–	QM/947	QM/57010/26	M/P71364	QM/8010/32	M/P1501/80	QM/33/012/22#
16	QM/8012/38	M/P19369	QM/57016/25	–	QM/946	QM/57016/26	M/P1501/90	QM/8012/32	M/P1501/79	QM/33/016/22#
20	QM/8020/38	M/P19389	QM/57020/25	–	QM/8012/24	QM/57020/26	M/P13834	QM/8020/32	M/P1501/60	QM/33/020/22#
25	QM/8025/38	M/P40381	QM/57025/25	–	QM/57025/24	QM/57025/26	M/P13607	QM/8025/32	M/P1501/89	QM/33/025/22#
32	QM/8025/38	M/P19406	QM/57032/25	–	QM/8020/24	QM/57032/26	M/P13615	QM/8025/32	M/P1501/89	QM/33/032/22#
40	QM/8040/38	M/P71273/3	QM/57040/25	–	QM/57040/24	QM/57040/26	M/P29254	QM/8040/32	M/P1501/90	QM/33/040/22#
50	QM/8040/38	QM/57050/21	QM/57040/25	QM/55240/28	QM/57050/24	QM/57050/26	–	QM/8040/32	M/P1501/90	QM/33/050/22#
63	QM/8050/38	QM/57063/21	QM/57063/25	QM/55250/28	QM/57063/24	QM/57063/26	–	QM/8050/32	M/P1501/91	QM/33/063/22#

Please see page 24 for details of mountings.

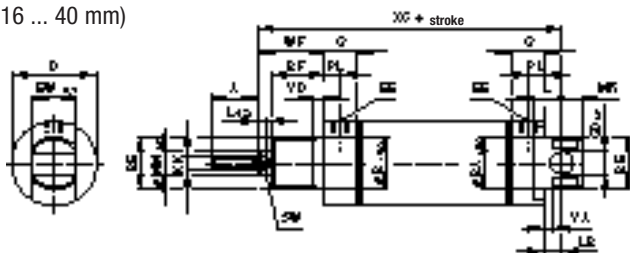
# For use with switches M/50, see page 198

## Standard cylinders

RT/57200/M  
(Ø 8 ... 12 mm)

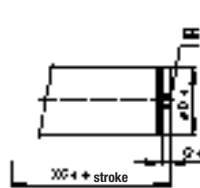


(Ø 16 ... 40 mm)

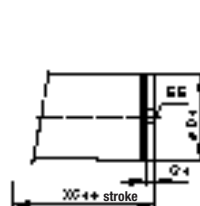


## Cylinder variants

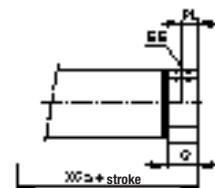
RT/57200/MC - Central rear port  
(Ø 8 ... 12 mm)



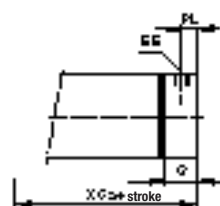
(Ø 16 ... 40 mm)



RT/57200/MF - Side port, flat end  
(Ø 8 ... 12 mm)



(Ø 16 ... 40 mm)



Ø	A	Ø B/BA	BE	BF	Ø CD h9	Ø D	Ø D1	EE	EW-0,1	EW1	G	G1	H		
8	8	10	M 10 x 1	7,5	3	12	9,5	M 3	6	10	7,5	3	5		
10	9	10	M 10 x 1	8	4	15	11,5	M 5	8	12,5	9,5	4,5	6,5		
12	9	10	M 10 x 1	8	4	15	13	M 5	8	–	9,5	4,5	6,5		
16	12	12	M 12 x 1,25	10	5	17,5	17,5	M 5	10	–	11,5	4	–		
20	14	16	M 16 x 1,5	12	6	22	21,5	Rc 1/8	12	–	15,5	8	–		
25	16	18	M 18 x 1,5	12	8	26,5	26,5	Rc 1/8	14	–	15,5	8	–		
32	22	22	M 22 x 1,5	15	8	33,5	33,5	Rc 1/8	16	–	17,5	5,5	–		
40	23	30	M 30 x 1,5	15	10	41,5	41,5	Rc 1/8	20	–	18	5,5	–		
Ø	KK	L	LB	L12	Ø MMh9	MR	PL	SW	VA/VD	WF	XC	XC1	XC2	kg at 0 mm	kg per 100 mm
8	M 3	–	4,5	3	3	3	4	–	1,5	8,5	48	39	43,5	0,02	0,02
10	M 4	–	5	4	4	4	5,5	–	1,5	10	54	44	49	0,02	0,03
12	M 4	–	5	4	4	4	5,5	–	1,5	10	54	44	49	0,02	0,03
16	M 6	–	7	6	6	5	5,5	5	2	13,5	64,5	50	57,5	0,04	0,05
20	M 8	–	7	8	8	6	9	7	3	15,5	75,5	61	68,5	0,08	0,07
25	M 10 x 1,25	–	9	10	10	8	9	9	3	16,5	78,5	62	69,5	0,12	0,11
32	M 10 x 1,25	12	7	12	12	8	9	10	3	23	93	74	86	0,21	0,16
40	M 12 x 1,25	14	5	14	14	10	10	12	3	24	96	78,5	91	0,33	0,20

## Roundline cylinders

RT/57200

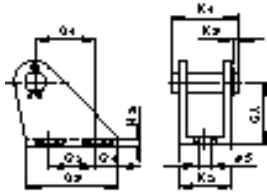
Double acting

Ø 8 to 63 mm

### Roundline cylinder mountings

for RT/57100/M, RT/57200/M, RT/57300/M

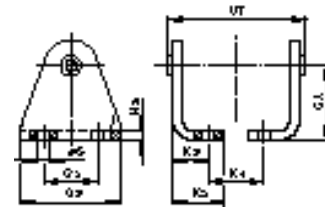
Rear hinge – L  
(Ø 8 ... 40 mm)



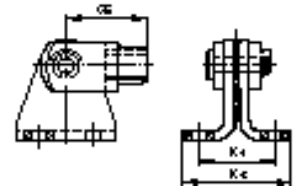
Front hinge – M  
(Ø 8 ... 40 mm)



Rear hinge – L  
(Ø 50 & 63 mm)



Front hinge – M  
(Ø 50 & 63 mm)

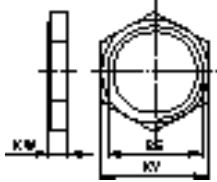


Ø	CA	G1	G2	G3	G4	H2	K1	K2	K3	Ø S	UT	kg
8	10	9	7	14	3,5	1	–	8	–	3,5	–	0,01
10	12	6,5	–	15	6	1	–	10,5	–	4,8	–	0,01
12	12	6,5	–	15	6	1	–	10,5	–	4,8	–	0,01
16	16	13	10	22	6	1,5	–	12,5	–	4,8	–	0,02
20	20	18,5	15	30	8	1,5	–	15	–	5,5	–	0,02
25	22	20	15	33	9	2	–	18	–	6,6	–	0,04
32	25	20	15	35	10	2	–	20,5	–	6,6	–	0,04
40	28	25	20	42	11	3	–	26	–	7	–	0,09
50	40	–	30	54	–	4	30,5	24	15	9	68	0,20
63	47	–	40	64	–	5	40,5	26,5	17,5	9	84	0,32

Ø	CA	CE	K4	K5	Ø S	kg
8	10	11	–	–	3,5	0,02
10	12	16	–	–	4,8	0,02
12	12	16	–	–	4,8	0,02
16	16	20	–	–	4,8	0,03
20	20	24	–	–	5,5	0,04
25	22	26	–	–	6,6	0,08
32	25	32	–	–	6,6	0,09
40	28	40	–	–	7	0,18
50	40	48	34	52	9	0,33
63	47	56	39	57	9	0,54

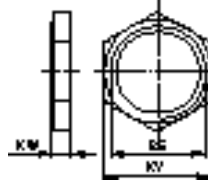
Includes pivot nuts on Ø 50 and Ø 63 mm.

Nose nut – N



Ø	BE	KV	KW	kg
8	M10x1	14	4	0,01
10	M10x1	14	4	0,01
12	M10x1	14	4	0,01
16	M12x1,25	19	6	0,01
20	M16x1,5	22	5	0,01
25	M18x1,5	24	5	0,01
32	M22x1,5	27	8	0,02
40	M30x1,5	36	8	0,03

Piston rod lock nut

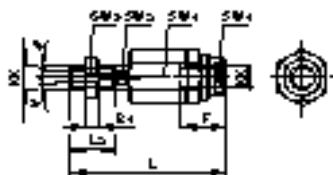


Ø	BE	KV	KW	kg
8	M3	6	2	0,01
10	M4	7	2	0,01
12	M4	7	2	0,01
16	M8	10	3	0,01
20	M8	13	4	0,01
25	M10x1,25	17	5	0,01
32	M10x1,25	17	5	0,01
40	M12x1,25	19	6	0,01
50	M12x1,25	19	6	0,01
63	M16x1,5	24	8	0,02

# Roundline cylinder mountings

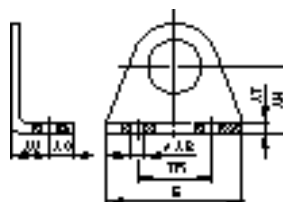
For RT/57100/M, RT/57200/M, RT/57300/M

Piston rod swivel – AK



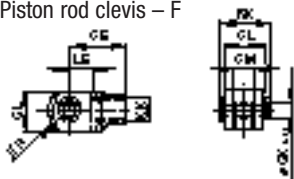
Ø	B1	F	KK	L	L2	SW1 (A/F)	SW2 (A/F)	SW3 (A/F)	SW4 (A/F)	kg
10	2	12,5	M4	33	8	11	3,2	7	11	0,01
12	2	12,5	M4	33	8	11	3,2	7	11	0,01
16	3	14	M6	39	12	7	5	10	13	0,02
20	4	18	M8	55	16	10	7	13	17	0,05
25	5	26	M10x1,25	73	20	19	12	17	30	0,20
32	5	26	M10x1,25	73	20	19	12	17	30	0,20
40	6	26	M12x1,25	77	24	19	12	19	30	0,20
50	6	26	M12x1,25	77	24	19	12	19	30	0,20
63	8	34	M16x1,5	106	32	30	19	24	42	0,65

Foot – C



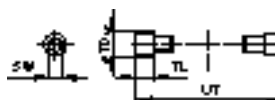
Ø	Ø AB	AH	AO	AT	AU	E	TR	kg
8	3,8	10	3,5	1,5	7,5	25	18	0,01
10	5	12	4,5	1,5	7,5	30	20	0,01
12	5	12	4,5	1,5	7,5	30	20	0,01
16	4,5	16	6	2	10	35	25	0,02
20	5,5	20	6	3	13	43	32	0,03
25	6,6	22	8	3	12,5	49	38	0,04
32	6,6	25	7,5	4	16	53	40	0,06
40	7	28	7	4	16	66	52	0,08
50	9	40	10	4	17	52	36	0,18
63	9	47	10	5	19	61	45	0,3

Piston rod clevis – F



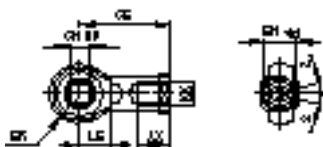
Ø	CE	ØCK h11	CL	CM B12	ER	KK	LE	RK	kg
8	11	3 h9	6	3	4,5	M3	5	10,5	0,01
10	16	4	8	4	6,5	M4	8	11,5	0,01
12	16	4	8	4	6,5	M4	8	11,5	0,01
16	20	5	10	5	8	M6	10	14,5	0,01
20	24	6	12	6	9,5	M8	12	17,5	0,02
25	26	8	14	7	11,5	M10x1,25	12	20,5	0,04
32	32	8	16	8	13	M10x1,25	16	22,5	0,05
40	40	10	20	10	16	M12x1,25	20	29	0,09
50	48	12	24	12	19	M12x1,25	24	33	0,13
63	56	14	27	14	21	M16x1,5	28	36,5	0,22

End cover trunnion – H



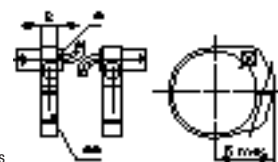
Ø	SW	Ø TD h9	TL	UT	kg
50	6	12	9,5	68	0,05
63	6	14	11	84	0,07

Universal piston rod eye – UF



Ø	AX	CE1	Ø CN17	EN	ER1	LE1	KK	kg
10	14	27	5	8	8	10	M4	0,02
12	14	27	5	8	8	10	M4	0,02
16	14	30	6	9	9	11	M6	0,02
20	16	36	8	12	11	13	M8	0,05
25	20	43	10	14	14	15	M10x1,25	0,08
32	20	43	10	14	14	15	M10x1,25	0,08
40	22	50	12	16	16	17	M12x1,25	0,12
50	22	50	12	16	16	17	M12x1,25	0,15
63	28	64	16	21	21	22	M16x1,5	0,15

Brackets for switches M/50, QM/34, or QM/134



\* Bracket  
\*\*Magnetically operated switches

Ø	B	R max.	kg
10	8	14	0,01
12	8	15	0,01
16	10	18	0,01
20	10	20	0,01
25	10	22,5	0,01
32	10	29	0,01
40	10	32	0,01
50	10	38	0,01
63	10	46	0,01

# ROUNDLINE CYLINDERS RT/57100/M

Single acting – Ø 20 to 40 mm

Saves 20% space over the basic length of a corresponding ISO/VDMA cylinder

Low friction, long life seals

High strength, double crimped end cap design

Standard magnetic piston for full control system versatility

## TECHNICAL DATA

### Medium:

Compressed air, filtered, lubricated or non-lubricated

### Operation:

Single acting, sprung in

### Operating pressure:

2 to 10 bar

### Operating temperature:

-5°C to +80°C max.

Consult our Technical Service for use below +2°C



## Dimensions

Dia. Ø	A	BE	BF	Ø CDh9	Ø D	EW-0,1	KK	L	LB	MR	V (#10 and 25)	V (#50)	WF	XC
20	14	M16 x 1,5	12	6	22	12	M8	–	7	6	17	34	15,5	75,5
25	16	M18 x 1,5	12	8	26,5	14	M10 x 1,25	–	9	8	18	36	16,5	78,5
32	22	M22 x 1,5	15	8	33,5	16	M10 x 1,25	12	7	8	19	38	23	93
40	23	M30 x 1,5	15	10	41,5	20	M12 x 1,25	14	5	10	20	40	24	96

## Models

Model	Dia. Ø	Stroke length	Port size	Piston rod Ø	Reed switch with integral 5 m cable	Switch mounting	Banjo flow control	Straight fitting	Elbow fitting
									
RT/57120/M/10	20	10	Rc 1/8	8	M/50/LSU/SW	QM/03/02Q/22	C0SA00618	C01250618	C01470618
RT/57120/M/25	20	25	Rc 1/8	8	M/50/LSU/SW	QM/03/02Q/22	C0SA00618	C01250618	C01470618
RT/57120/M/50	20	50	Rc 1/8	8	M/50/LSU/SW	QM/03/02Q/22	C0SA00618	C01250618	C01470618
RT/57125/M/10	25	10	Rc 1/8	10	M/50/LSU/SW	QM/03/02S/22	C0SA00618	C01250618	C01470618
RT/57125/M/25	25	25	Rc 1/8	10	M/50/LSU/SW	QM/03/02S/22	C0SA00618	C01250618	C01470618
RT/57125/M/50	25	50	Rc 1/8	10	M/50/LSU/SW	QM/03/02S/22	C0SA00618	C01250618	C01470618
RT/57132/M/25	32	25	Rc 1/8	12	M/50/LSU/SW	QM/03/03Q/22	C0SA00618	C01250618	C01470618
RT/57132/M/50	32	50	Rc 1/8	12	M/50/LSU/SW	QM/03/03Q/22	C0SA00618	C01250618	C01470618
RT/57140/M/25	40	25	Rc 1/8	14	M/50/LSU/SW	QM/03/04Q/22	C0SA00618	C01250618	C01470618
RT/57140/M/50	40	50	Rc 1/8	14	M/50/LSU/SW	QM/03/04Q/22	C0SA00618	C01250618	C01470618

Other stroke lengths available please call your Express Team

Service kits are not available for this range of cylinders

For information on alternative magnetic switches see page 58

# ROUNDLINE CYLINDERS RT/57200/M

Double acting – Ø 10 ... 63 mm



Saves 20% space over the basic length of a corresponding ISO/VDMA cylinder

Low friction, long life seals

High strength, double crimped end cap design

Standard magnetic piston for full control system versatility

## TECHNICAL DATA

### Medium:

Compressed air, filtered, lubricated or non-lubricated

### Operation:

Double acting, buffer cushioning

Side port, integral eye mounting (Ø 8 to 40 mm), fixing holes in the end cover (Ø 50 and 63 mm)

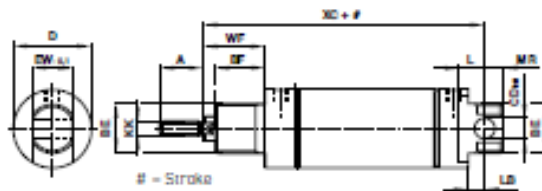
### Operating pressure:

1 ... 10 bar

### Operating temperature:

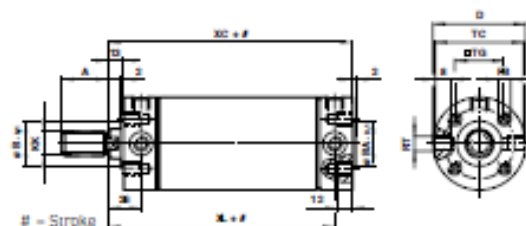
-10°C ... +80°C

Consult our Technical Service for use below +2°C



## Dimensions (Ø 10 to 40mm)

Dia. Ø	A	BE	BF	Ø CDh9	Ø D	EW-0,1	KK	L	LB	MR	WF	XC
10	9	M10 x 1	8	4	15	8	M4	-	5	4	10	54
12	9	M10 x 1	8	4	15	8	M4	-	5	4	10	54
16	12	M12 x 1,25	10	5	17,5	10	M6	-	7	5	13,5	64,5
20	14	M16 x 1,5	12	6	22	12	M8	-	7	6	15,5	75,5
25	16	M18 x 1,5	12	8	26,5	14	M10 x 1,25	-	9	8	16,5	78,5
32	22	M22 x 1,5	15	8	33,5	16	M10 x 1,25	12	7	8	23	93
40	23	M30 x 1,5	15	10	41,5	20	M12 x 1,25	14	5	10	24	96









## Dimensions (Ø 50 and 63 mm)

Dia. Ø	A	Ø B/BA-0,1	Ø D	FB	KK	RT	TC	TG	XC	XL
50	23	28	52,5	M 6	M 12 x 1,25	M 10 x 1	49	28,5	97	84
63	30	35	65,5	M 8	M 16 x 1,5	M 12 x 1,5	62	35,5	99	86

Double acting – Ø 10 ... 63 mm

## Models

## Accessories

Model	Dia. Ø	Stroke length	Port size	Piston rod Ø	Reed switch with integral 5 m cable	Switch mounting	Banjo flow control	Straight fitting	Elbow fitting
									
RT/57210/M/10	10	10	M5	4	M/5q/LSU/5V	QM/33/010/22	C0K510405	C02250405	C02470405
RT/57210/M/25	10	25	M5	4	M/5q/LSU/5V	QM/33/010/22	C0K510405	C02250405	C02470405
RT/57210/M/40	10	40	M5	4	M/5q/LSU/5V	QM/33/010/22	C0K510405	C02250405	C02470405
RT/57210/M/50	10	50	M5	4	M/5q/LSU/5V	QM/33/010/22	C0K510405	C02250405	C02470405
RT/57212/M/10	12	10	M5	4	M/5q/LSU/5V	QM/33/012/22	C0K510405	C02250405	C02470405
RT/57212/M/25	12	25	M5	4	M/5q/LSU/5V	QM/33/012/22	C0K510405	C02250405	C02470405
RT/57212/M/40	12	40	M5	4	M/5q/LSU/5V	QM/33/012/22	C0K510405	C02250405	C02470405
RT/57212/M/50	12	50	M5	4	M/5q/LSU/5V	QM/33/012/22	C0K510405	C02250405	C02470405
RT/57216/M/10	16	10	M5	6	M/5q/LSU/5V	QM/33/016/22	C0K510405	C02250405	C02470405
RT/57216/M/25	16	25	M5	6	M/5q/LSU/5V	QM/33/016/22	C0K510405	C02250405	C02470405
RT/57216/M/40	16	40	M5	6	M/5q/LSU/5V	QM/33/016/22	C0K510405	C02250405	C02470405
RT/57216/M/50	16	50	M5	6	M/5q/LSU/5V	QM/33/016/22	C0K510405	C02250405	C02470405
RT/57216/M/80	16	80	M5	6	M/5q/LSU/5V	QM/33/016/22	C0K510405	C02250405	C02470405
RT/57216/M/100	16	100	M5	6	M/5q/LSU/5V	QM/33/016/22	C0K510405	C02250405	C02470405
RT/57220/M/10	20	10	Rc 1/8	8	M/5q/LSU/5V	QM/33/020/22	C0TAD0618	C01250618	C01470618
RT/57220/M/25	20	25	Rc 1/8	8	M/5q/LSU/5V	QM/33/020/22	C0TAD0618	C01250618	C01470618
RT/57220/M/40	20	40	Rc 1/8	8	M/5q/LSU/5V	QM/33/020/22	C0TAD0618	C01250618	C01470618
RT/57220/M/50	20	50	Rc 1/8	8	M/5q/LSU/5V	QM/33/020/22	C0TAD0618	C01250618	C01470618
RT/57220/M/80	20	80	Rc 1/8	8	M/5q/LSU/5V	QM/33/020/22	C0TAD0618	C01250618	C01470618
RT/57220/M/100	20	100	Rc 1/8	8	M/5q/LSU/5V	QM/33/020/22	C0TAD0618	C01250618	C01470618
RT/57220/M/125	20	125	Rc 1/8	8	M/5q/LSU/5V	QM/33/020/22	C0TAD0618	C01250618	C01470618
RT/57220/M/160	20	160	Rc 1/8	8	M/5q/LSU/5V	QM/33/020/22	C0TAD0618	C01250618	C01470618
RT/57220/M/200	20	200	Rc 1/8	8	M/5q/LSU/5V	QM/33/020/22	C0TAD0618	C01250618	C01470618
RT/57220/M/250	20	250	Rc 1/8	8	M/5q/LSU/5V	QM/33/020/22	C0TAD0618	C01250618	C01470618
RT/57220/M/320	20	320	Rc 1/8	8	M/5q/LSU/5V	QM/33/020/22	C0TAD0618	C01250618	C01470618
RT/57225/M/10	25	10	Rc 1/8	10	M/5q/LSU/5V	QM/33/025/22	C0TAD0618	C01250618	C01470618
RT/57225/M/25	25	25	Rc 1/8	10	M/5q/LSU/5V	QM/33/025/22	C0TAD0618	C01250618	C01470618
RT/57225/M/40	25	40	Rc 1/8	10	M/5q/LSU/5V	QM/33/025/22	C0TAD0618	C01250618	C01470618
RT/57225/M/50	25	50	Rc 1/8	10	M/5q/LSU/5V	QM/33/025/22	C0TAD0618	C01250618	C01470618
RT/57225/M/80	25	80	Rc 1/8	10	M/5q/LSU/5V	QM/33/025/22	C0TAD0618	C01250618	C01470618
RT/57225/M/100	25	100	Rc 1/8	10	M/5q/LSU/5V	QM/33/025/22	C0TAD0618	C01250618	C01470618
RT/57225/M/125	25	125	Rc 1/8	10	M/5q/LSU/5V	QM/33/025/22	C0TAD0618	C01250618	C01470618
RT/57225/M/160	25	160	Rc 1/8	10	M/5q/LSU/5V	QM/33/025/22	C0TAD0618	C01250618	C01470618
RT/57225/M/200	25	200	Rc 1/8	10	M/5q/LSU/5V	QM/33/025/22	C0TAD0618	C01250618	C01470618
RT/57225/M/250	25	250	Rc 1/8	10	M/5q/LSU/5V	QM/33/025/22	C0TAD0618	C01250618	C01470618
RT/57225/M/320	25	320	Rc 1/8	10	M/5q/LSU/5V	QM/33/025/22	C0TAD0618	C01250618	C01470618
RT/57232/M/10	32	10	Rc 1/8	12	M/5q/LSU/5V	QM/33/032/22	C0TAD0618	C01250618	C01470618
RT/57232/M/25	32	25	Rc 1/8	12	M/5q/LSU/5V	QM/33/032/22	C0TAD0618	C01250618	C01470618
RT/57232/M/40	32	40	Rc 1/8	12	M/5q/LSU/5V	QM/33/032/22	C0TAD0618	C01250618	C01470618
RT/57232/M/50	32	50	Rc 1/8	12	M/5q/LSU/5V	QM/33/032/22	C0TAD0618	C01250618	C01470618
RT/57232/M/80	32	80	Rc 1/8	12	M/5q/LSU/5V	QM/33/032/22	C0TAD0618	C01250618	C01470618
RT/57232/M/100	32	100	Rc 1/8	12	M/5q/LSU/5V	QM/33/032/22	C0TAD0618	C01250618	C01470618
RT/57232/M/125	32	125	Rc 1/8	12	M/5q/LSU/5V	QM/33/032/22	C0TAD0618	C01250618	C01470618
RT/57232/M/160	32	160	Rc 1/8	12	M/5q/LSU/5V	QM/33/032/22	C0TAD0618	C01250618	C01470618
RT/57232/M/200	32	200	Rc 1/8	12	M/5q/LSU/5V	QM/33/032/22	C0TAD0618	C01250618	C01470618
RT/57232/M/250	32	250	Rc 1/8	12	M/5q/LSU/5V	QM/33/032/22	C0TAD0618	C01250618	C01470618
RT/57232/M/320	32	320	Rc 1/8	12	M/5q/LSU/5V	QM/33/032/22	C0TAD0618	C01250618	C01470618
RT/57240/M/25	40	25	Rc 1/8	14	M/5q/LSU/5V	QM/33/040/22	C0TAD0618	C01250618	C01470618
RT/57240/M/40	40	40	Rc 1/8	14	M/5q/LSU/5V	QM/33/040/22	C0TAD0618	C01250618	C01470618
RT/57240/M/50	40	50	Rc 1/8	14	M/5q/LSU/5V	QM/33/040/22	C0TAD0618	C01250618	C01470618
RT/57240/M/80	40	80	Rc 1/8	14	M/5q/LSU/5V	QM/33/040/22	C0TAD0618	C01250618	C01470618
RT/57240/M/100	40	100	Rc 1/8	14	M/5q/LSU/5V	QM/33/040/22	C0TAD0618	C01250618	C01470618
RT/57240/M/125	40	125	Rc 1/8	14	M/5q/LSU/5V	QM/33/040/22	C0TAD0618	C01250618	C01470618
RT/57240/M/160	40	160	Rc 1/8	14	M/5q/LSU/5V	QM/33/040/22	C0TAD0618	C01250618	C01470618
RT/57240/M/200	40	200	Rc 1/8	14	M/5q/LSU/5V	QM/33/040/22	C0TAD0618	C01250618	C01470618
RT/57240/M/250	40	250	Rc 1/8	14	M/5q/LSU/5V	QM/33/040/22	C0TAD0618	C01250618	C01470618
RT/57240/M/320	40	320	Rc 1/8	14	M/5q/LSU/5V	QM/33/040/22	C0TAD0618	C01250618	C01470618

# ROUNDLINE CYLINDERS RT/57200/M

Double acting – Ø 10 ... 63 mm

## Models

## Accessories

Model	Dia. Ø	Stroke length	Port size	Piston rod Ø	Reed switch with integral 5 m cable	Switch mounting	Banjo flow control	Straight fitting	Elbow fitting
									
RT/57250/M/25	50	25	Rc 1/4	16	M/5Q/LSU/9V	QM/33/05Q/22	C0TA00829	C01250829	C01470829
RT/57250/M/40	50	40	Rc 1/4	16	M/5Q/LSU/9V	QM/33/05Q/22	C0TA00829	C01250829	C01470829
RT/57250/M/50	50	50	Rc 1/4	16	M/5Q/LSU/9V	QM/33/05Q/22	C0TA00829	C01250829	C01470829
RT/57250/M/80	50	80	Rc 1/4	16	M/5Q/LSU/9V	QM/33/05Q/22	C0TA00829	C01250829	C01470829
RT/57250/M/100	50	100	Rc 1/4	16	M/5Q/LSU/9V	QM/33/05Q/22	C0TA00829	C01250829	C01470829
RT/57250/M/125	50	125	Rc 1/4	16	M/5Q/LSU/9V	QM/33/05Q/22	C0TA00829	C01250829	C01470829
RT/57250/M/160	50	160	Rc 1/4	16	M/5Q/LSU/9V	QM/33/05Q/22	C0TA00829	C01250829	C01470829
RT/57250/M/200	50	200	Rc 1/4	16	M/5Q/LSU/9V	QM/33/05Q/22	C0TA00829	C01250829	C01470829
RT/57250/M/250	50	250	Rc 1/4	16	M/5Q/LSU/9V	QM/33/05Q/22	C0TA00829	C01250829	C01470829
RT/57250/M/320	50	320	Rc 1/4	16	M/5Q/LSU/9V	QM/33/05Q/22	C0TA00829	C01250829	C01470829
RT/57263/M/25	63	25	Rc 1/4	20	M/5Q/LSU/9V	QM/33/063/22	C0TA00829	C01250829	C01470829
RT/57263/M/40	63	40	Rc 1/4	20	M/5Q/LSU/9V	QM/33/063/22	C0TA00829	C01250829	C01470829
RT/57263/M/50	63	50	Rc 1/4	20	M/5Q/LSU/9V	QM/33/063/22	C0TA00829	C01250829	C01470829
RT/57263/M/80	63	80	Rc 1/4	20	M/5Q/LSU/9V	QM/33/063/22	C0TA00829	C01250829	C01470829
RT/57263/M/100	63	100	Rc 1/4	20	M/5Q/LSU/9V	QM/33/063/22	C0TA00829	C01250829	C01470829
RT/57263/M/125	63	125	Rc 1/4	20	M/5Q/LSU/9V	QM/33/063/22	C0TA00829	C01250829	C01470829
RT/57263/M/160	63	160	Rc 1/4	20	M/5Q/LSU/9V	QM/33/063/22	C0TA00829	C01250829	C01470829
RT/57263/M/200	63	200	Rc 1/4	20	M/5Q/LSU/9V	QM/33/063/22	C0TA00829	C01250829	C01470829
RT/57263/M/250	63	250	Rc 1/4	20	M/5Q/LSU/9V	QM/33/063/22	C0TA00829	C01250829	C01470829
RT/57263/M/320	63	320	Rc 1/4	20	M/5Q/LSU/9V	QM/33/063/22	C0TA00829	C01250829	C01470829

Other diameters and stroke lengths available please call your Express Team

Service kits are not available for this range of cylinders

For information on alternative magnetic switches see page 58

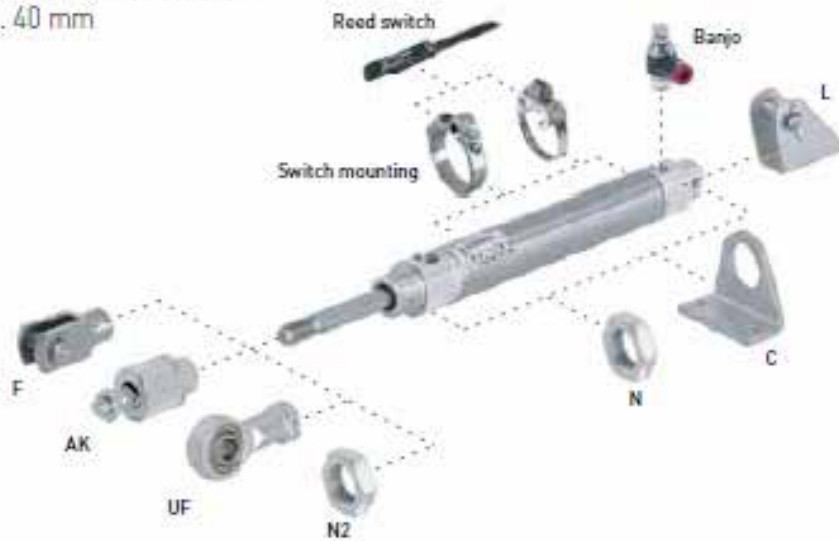
For the full range of fittings available see page 224



## MOUNTINGS FOR RT/57100/M & RT/57200/M Roundline cylinders

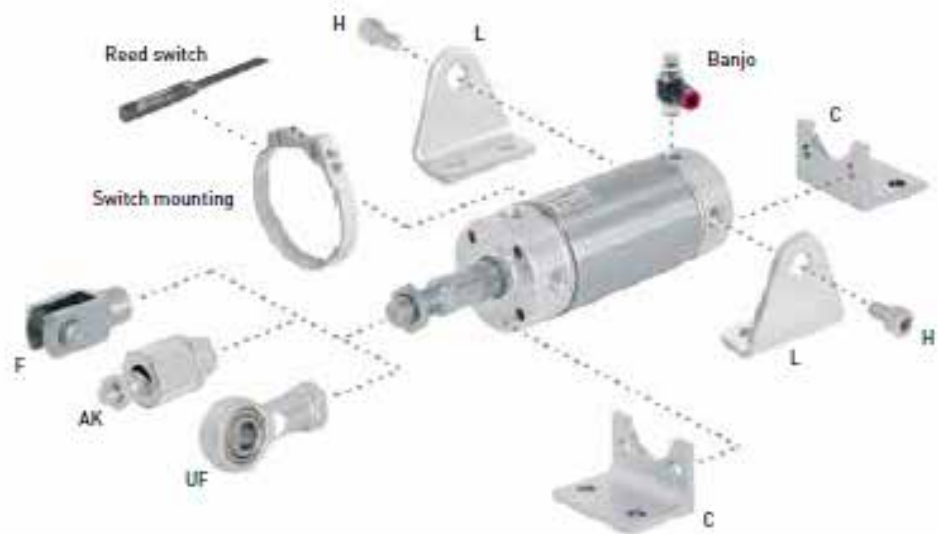
### Single and Double Acting

Ø 10 ... 40 mm



### Double Acting Only

Ø 50 ... 63 mm



Dia. Ø	AK	C	F	H	L	N	N2	UF
10	QM/8010/38	M/P71273/2	QM/8010/25	-	QM/947	M/P71364	M/P1501/90	QM/8010/32
12	QM/8010/38	M/P71273/2	QM/8010/25	-	QM/947	M/P71364	M/P1501/90	QM/8010/32
16	QM/8012/38	M/P19369	QM/57016/25	-	QM/946	M/P1501/90	M/P1501/79	QM/8012/32
20	QM/8020/38	M/P19389	QM/57020/25	-	QM/8012/24	M/P13834	M/P1501/60	QM/8020/32
25	QM/8025/38	M/P40081	QM/57025/25	-	QM/57025/25	M/P13607	M/P1501/89	QM/8025/32
32	QM/8025/38	M/P19406	QM/57032/25	-	QM/8020/24	M/P13615	M/P1501/89	QM/8025/32
40	QM/8040/38	M/P71273/3	QM/57040/25	-	QM/57040/24	M/P29254	M/P1501/90	QM/8040/32
50	QM/8040/38	QM/57050/21	QM/57040/25	QM/55240/28	QM/57050/24	-	M/P1501/90	QM/8040/32
63	QM/8050/38	QM/57063/21	QM/57063/25	QM/55250/28	QM/57063/24	-	M/P1501/91	QM/8050/32