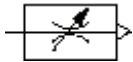
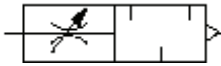




T20 & 0405 Series

Exhaust flow regulator/silencers

M5, 1/8" to 1/2" BSP



Compact, integral flow regulator and silencer units
 Captive regulating needle will not blow out when unscrewed
 Reduced dimensions
 0405 Series – flow regulator or silencer can be ordered independently

Technical data

Medium:
 Compressed air, filtered, lubricated and non-lubricated, inert gases
 Operating pressure:
 0 to 10 bar
 Ambient temperature:
 -20°C to +80°C.
 Consult our Technical Service for use below +2°C.

Materials

T20:
 Body & washer: nylon
 Silencer: porous polyethylene
 Adjusting screw: high tensile zinc electroplated steel

0405:
 Body & nut: brass
 Needle: plastic
 Silencer: sintered bronze

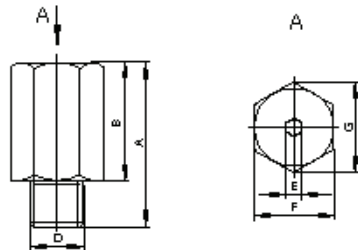
Mounting

Directly in the exhaust port.
 Screwdriver adjustment for flow regulation (0405)
 Allen key adjustment for flow regulation (T20)

Thread	Size	Max. regulated flow factor		Model
		C*	Cv	
Metric	M5	0,3	0,07	T20M0500
BSPP	1/8	1,6	0,4	T20C1800
BSPT	1/8	1,78	0,44	04057100
BSPT	1/8 Flow regulator only	1,78	0,44	04058100
BSPP	1/4	3,2	0,8	T20C2800
BSPT	1/4	1,78	0,44	04057200
BSPT	1/4 Flow regulator only	1,78	0,44	04058200
BSPP (female)	1/4 Silencer only	–	–	04059200
BSPP	3/8	6,9	1,7	T20C3800
BSPT	3/8	8,9	2,2	04057300
BSPT	3/8 Flow regulator only	8,9	2,2	04058300
BSPP (female)	1/2 Silencer only	–	–	04059400
BSPP	1/2	10	2,4	T20C4800
BSPT	1/2	8,9	2,2	04057400
BSPT	1/2 Flow regulator only	8,9	2,2	04058400

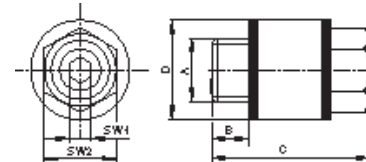
*C: measured in dm³/(s.bar)

T20M0500



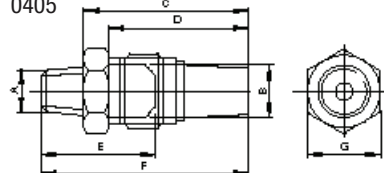
Model	A	B	D	E a/f	F a/f	G
T20M0500	16	11	M5	1,5	8	9,25

T20C*800



Model	A	B	C	Ø D	SW1	SW2
T20C1800	1/8	6	20,5	15	2,5	13
T20C2800	1/4	7	29	18	4	15
T20C3800	3/8	8	38	24	6	20
T20C4800	1/2	10	50	30	8	25

0405



Model	A*	B	C	D**	E***	F	G
04057100	1/8	1/4	35,0	27,5	26,0	44,5	15
04057200	1/4	1/4	35,5	27,5	27,5	46,0	15
04057300	3/8	1/4	55,0	45,5	34,5	67,5	24
04057400	1/2	1/4	53,5	45,5	36,5	69,5	24

A: according to ISO – 7/1 B: according to ISO – 228/1
 * BSP taper ** Flow regulator body *** Silencer body