

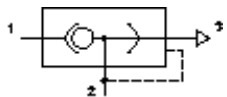


Valves

T70, S/511, S/513, S/514 Series

Quick exhaust valves

1/8 to 1/2" BSPP



Enables air to be exhausted quickly from air reservoirs and cylinders.

Allows higher cylinder speeds to be achieved.

Simple, compact design and construction.

Very reliable in operation.



Technical data

Medium:

Compressed air, filtered, lubricated and non-lubricated

Operating pressure:

0,5 to 10 bar (T70)

0,7 to 10 bar (S/511)

0,7 to 7 bar (S/513, S/514)

Ambient temperature:

-20°C to +80°C.

Consult our Technical Service for use below +2°C.

Materials

Body & cover: zinc alloy (T70*1800 & T70*2800, S/513), aluminium alloy (T70*3800 & T70*4800, S/511, S/514)

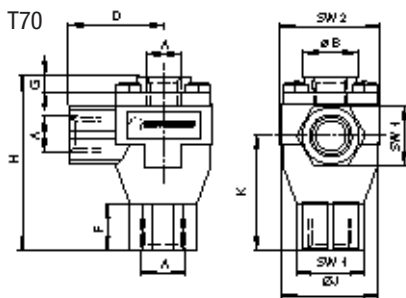
Seals: nitrile (T70), polyurethane (S/51*)

O-ring: nitrile

Element: porous plastic (S/513, S/514)

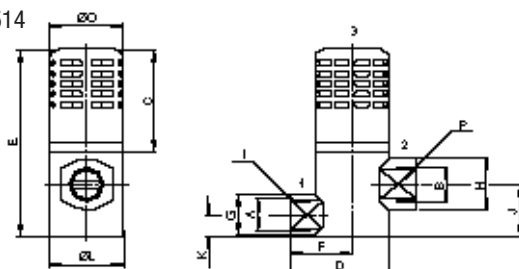
Port size BSPP	Flow (1 ... 2)***		Flow (2 ... 3)**		kg	Model	Spares kit (seals only)
	C*	Cv	C*	Cv			
G1/8	3,8	0,9	7,3	1,8	0,15	T70C1800	T70C1800K0
G1/4	7,7	1,9	10	2,5	0,13	T70C2800	T70C2800K0
G3/8	15,5	3,8	22,5	5,5	0,21	T70C3800	T70C3800K0
G1/2	21,5	5,3	24	5,9	0,19	T70C4800	T70C4800K0
G1/2	5,7	1,9	44	10,8	0,31	S/511	QS/511/00‡
G1/4	3,9	0,8	11	2,7	0,25	S/513	QS/510/00‡
G1/2	5,7	1,9	32	7,8	0,35	S/514	QS/511/00‡

* C = dm³/s.bar ** Flow factor measured at 6 bar inlet pressure. ‡ Seals and silencer element included
For NPT versions, substitute A at the 4th digit, e.g. T70A1800K0
For NPT ranges, substitute C at the 1st digit e.g. C/511



Model	A	Ø B	D	F	G	H	Ø J	K	SW1	SW2
T70C1800	G 1/8	19	28	15,5	3,5	53	29	35,5	19	30
T70C2800	G 1/4	19	28	15,5	3,5	53	29	35,5	19	30
T70C3800	G 3/8	30	40	15,5	4	73,5	46	48	30	46
T70C4800	G 1/2	30	40	15,5	4	73,5	46	48	30	46

S/513, S/514

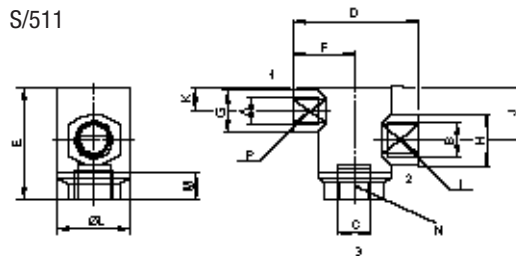


	A	B	C	D	E	F	G	H	I	J	K	Ø L	Ø P
S/513	G1/4*	G3/8	47,5	58	86,5	29	18,0	23	23	10	34,0	34	21
S/514	G1/2*	G3/4	63,0	100	134,0	50	28,5	35	36	48	17	47,5	59

* ISO 228/1

For NPT ranges, substitute C at the 1st digit e.g. C/513

S/511



	A	B	C	D	E	F	G	H	I	J	K	Ø L	M	N	P
S/511	G1/2*	G3/4	G3/4*	100	86	50	28,5	35	36	48	17	47,5	15,0	32	30x

* ISO 228/1

T70, S/511, S/513, S/514 Series

Quick exhaust valves

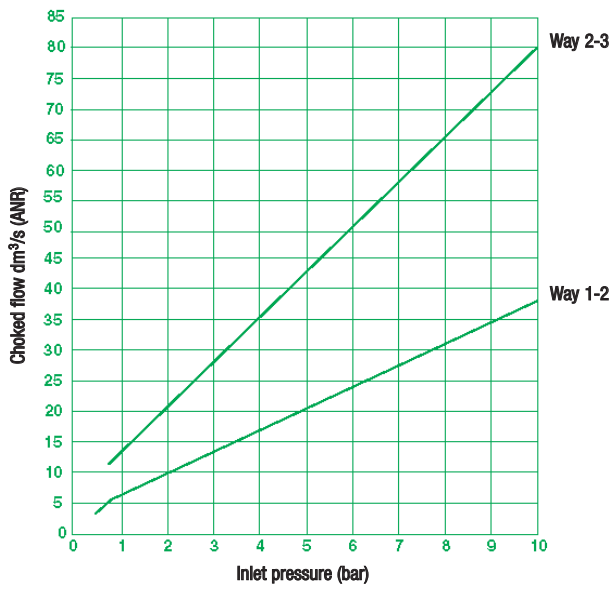
1/8 to 1/2" BSP

Characteristic curves

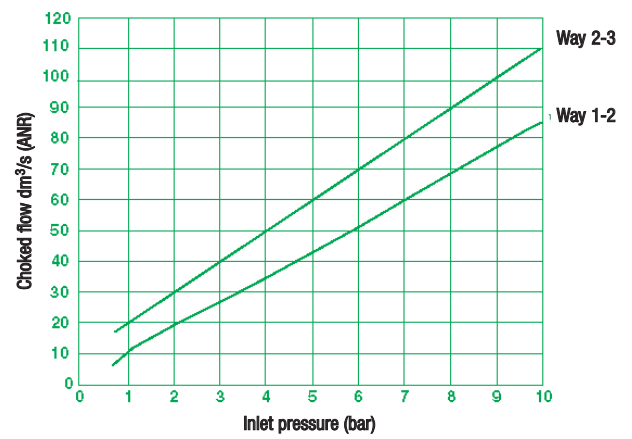
Choked flow versus inlet pressure

Way (1 - 2) + (2 - 3)

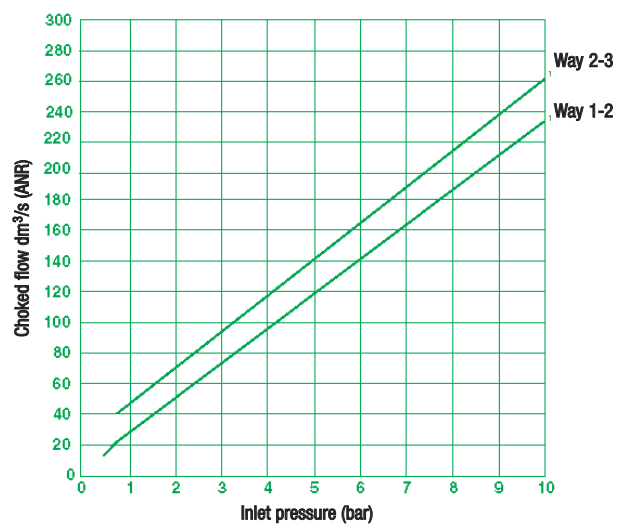
T70*1800



T70*2800



T70*4800



T70*3800

