

CETOP 3: Manifold Block

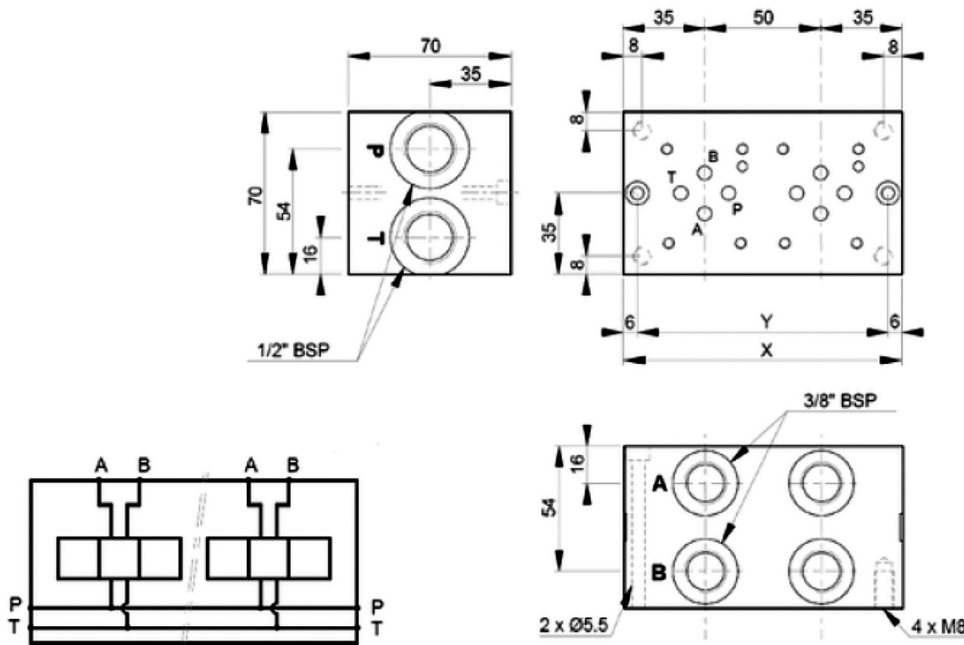


Features:

- Cast Iron Construction – Phosphated
- 345 Bar Maximum Working Pressure
- 40 L/min Maximum Flow Rate
- P and T Ports – 1/2" BSP
- A and B Ports – 3/8" BSP

Benefits:

- Reduced Fitting and Installation Costs
- Compact design of valve circuits
- Reduces leak Paths
- Allows for easy modification to valve assembly stacks



Part Number	No. Stations	X (mm)	Y (mm)
CM3-1G	1	70	58
CM3-2G	2	120	108
CM3-3G	3	170	158
CM3-4G	4	220	208
CM3-5G	5	270	258
CM3-6G	6	320	308

CETOP 3: Manifold Block

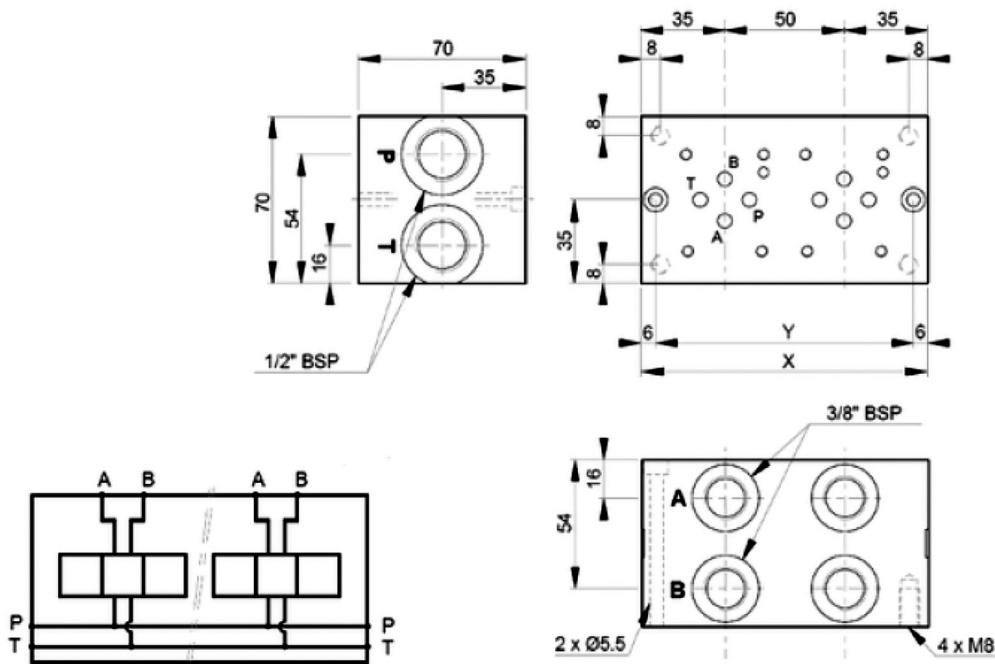
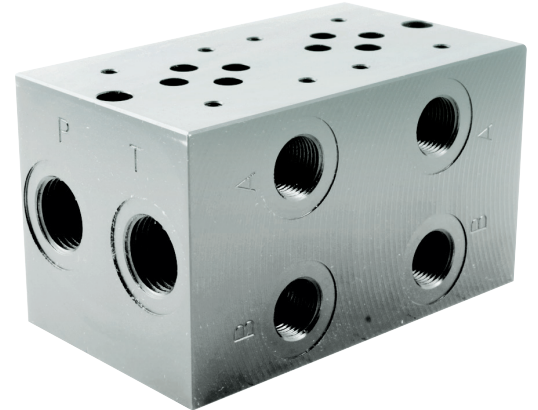


Features:

- Aluminium Construction
- 207 Bar Maximum Working Pressure
- 40 L/min Maximum Flow Rate
- P and T Ports – 1/2" BSP
- A and B Ports – 3/8" BSP

Benefits:

- Reduced Fitting and Installation Costs
- Compact design of valve circuits
- Reduces leak Paths
- Allows for easy modification to valve assembly stacks



Part Number	No. Stations	X (mm)	Y (mm)
CM3-1G/ALU	1	70	58
CM3-2G/ALU	2	120	108
CM3-3G/ALU	3	170	158
CM3-4G/ALU	4	220	208
CM3-5G/ALU	5	270	258
CM3-6G/ALU	6	320	308

CETOP 3 Auxiliary Plates - Blanking Plate

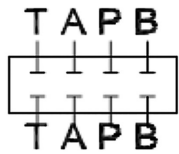
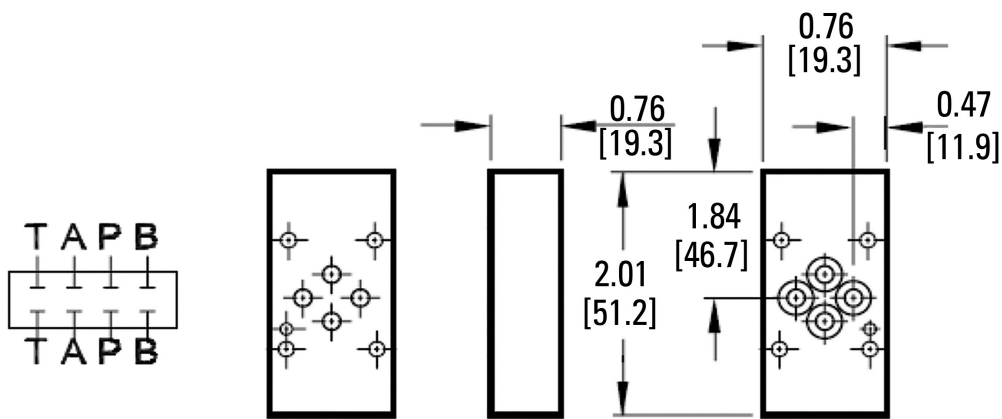


Features:

- Mild Steel Construction – Phosphated
- 345 Bar Maximum Working Pressure
- Supplied with Seals

Benefits:

- Compact design of valve circuits



Part Number
CBP-03

CETOP 3 Auxiliary Plates - Tapping Plate A & B

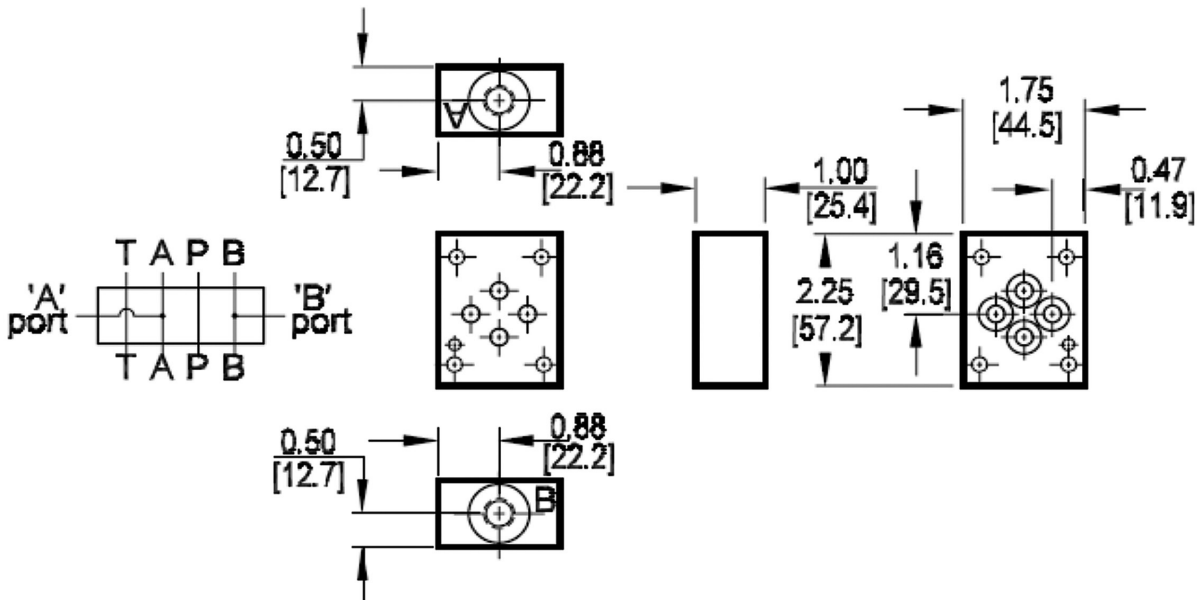


Features:

- Mild Steel Construction – Phosphated
- 345 Bar Maximum Working Pressure
- Supplied with Seals

Benefits:

- Compact design of valve circuits



Part Number	Pressure test Points
CTP-AB-03	A & B Lines

CETOP 3 Auxiliary Plates - Tapping Plate P & T

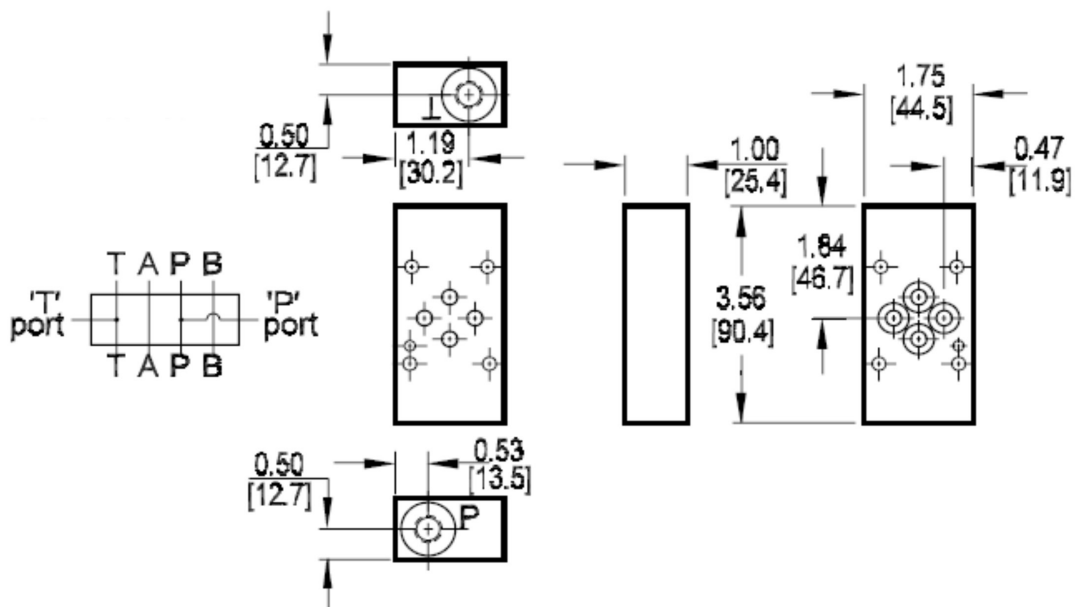


Features:

- Mild Steel Construction – Phosphated
- 345 Bar Maximum Working Pressure
- Supplied with Seals

Benefits:

- Compact design of valve circuits



Part Number	Pressure test Points
CTP-PT-03	P Lines

CETOP 3 Side Entry Subplate

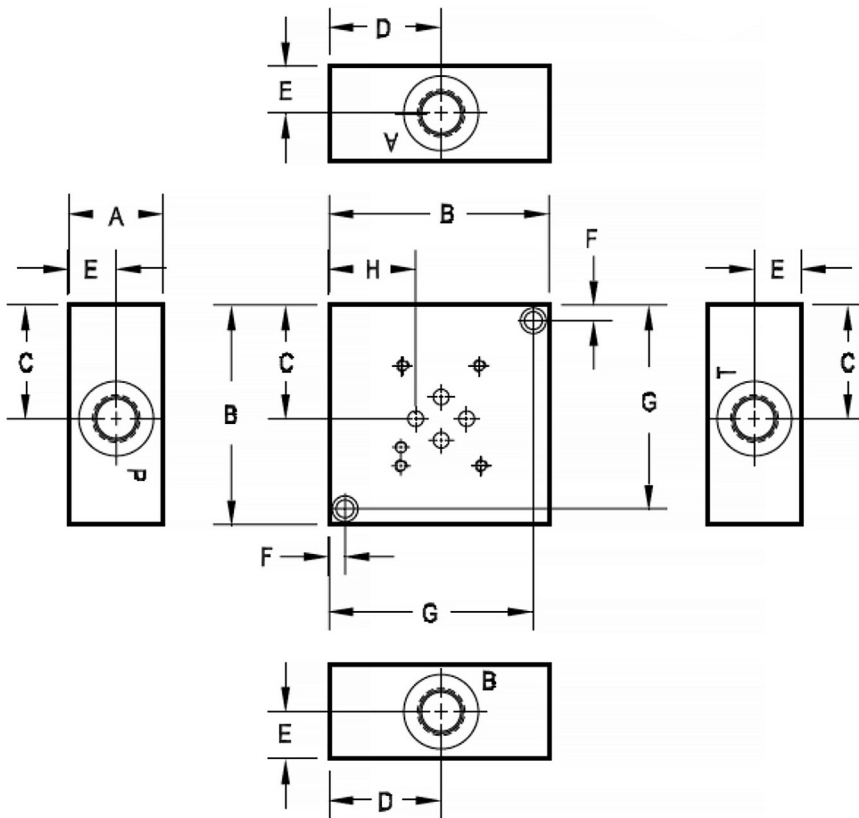


Features:

- Mild Steel Construction – Phosphated
- 345 Bar Maximum Working Pressure
- Supplied with Seals

Benefits:

- Compact design of valve circuits



Part Number	A	B	C	D	E	F	G	H
CSP-03	2.45	63.5	33.3	31.8	12.7	6.4	57.2	22.4